
SKOWHEGAN

JOURNAL
2021-2022

03 Summer 2022

**08 CONFERENCE CALL |
Exhibition Series**

Hetty Baiz (A '69)
Pío Galbis (A '82, '21)
Buster Graybill (A '07)
Gwendolyn Kerber (A '79)
Baxter Koziol (A '17)
Rocío Olivares (A '18)
Jordan Seaberry (A '15)
Pallavi Singh (A '15)
Molly Springfield (A '06)
Jing (Ellen) Xu (A '16)

13-19 Support

75th Anniversary Benefit Celebration
Thank you, Ann & Alan!
2022 Awards Dinner

20 Alumni & Faculty News

21 Community

Boards & Staff
Alumni Alliance
Council

On Stewardship, On Pedagogy

Sarah Workneh, Co-Director

As you flip through the pages of the 75th Capital Campaign report, which arrived along with this journal, you will see some pretty glorious images of the buildings and projects that are the result of a multi-year master facilities plan. What is not immediately evident in those images is the ways in which each of those projects were envisioned as part of a holistic effort that understands that the built and natural environment play a huge role, not just as a setting for Skowhegan, but in what we are capable of and enabled to imagine, how we treat each other, how we address and promote equity, what risks we feel empowered to take, and the ways in which we can push artmaking further as individuals and as collectives.

Many of the activities we have undertaken have been to bring us to this point—with the buildings, for sure, but also with the Capital Campaign, which raised funds to ensure our organizational autonomy writ large, but also to ensure our capacity to address the needs of artists from a proactive, equitable lens to support practices and the expansion of practices beyond the rules or trends of any given moment. Many of the activities—the Pollinator Garden let's say, but also the Bird Club; the Natural Amphitheater designed by Walter Hood, who not incidentally is the author of a book entitled *Black Landscapes Matter*—are about looking: looking at our environment, looking at each other, looking at history (and what has gone unseen), and looking beyond what we notice and see in our everyday lives.

The Driskell House emerges out of a different kind of looking—observing, talking, feeling with participants about the supports they need in order to do the work that is vital to them. Named in honor of Dr. David Driskell, we are reminded of his important work in forging a path for scholarship around the practices of Black Artists. Dr. Driskell was looking when much of the rest of the world chose to look away. Inside, the Driskell House is more inclusive, accessible housing, single occupancy bathrooms for the privacy that our bodies deserve and quiet space for those for whom communal living can be challenging for all kinds of reasons. The Moffett/Gober Pavilion, the upcoming Flex Space, the expansion of the Acquavella Sculpture Shop are about opening our imaginations to new ways of working: things we have language for in 2023 and things we can't even imagine at this point; and about leveling resources across media (historically the school of Painting & Sculpture, but contemporaneously, much much more). The Gund Dining Hall is more than a place where we gather to eat (as important as that is)—it is an investment in our local farming economy—a way to connect how and what we eat to the land we wander upon for nine weeks each summer.

Skowhegan is many beautiful things. It is people; it is practice; it is land. It's not any of these alone—and in fact, it is all of these things together. This work we have done over the past decade is a kind of call and response between three beautiful things. I've often thought about this work in radiating concentric circles. First, we began with the internal: what things do we need administratively to deepen our reach? Next we look to the individuals we are bringing to campus: who are they, what do they need in terms of support? Then the buildings and the grounds...of course, it doesn't happen so neatly or linearly but right now, the interior of those concentric circles is strong, and we sit just on the brink of the line that pushes us to address where we are beyond our own 350+ acres.

Ideas of territory and statehood existed in the state of Maine long before Skowhegan the school welcomed artists for its first summer. In 2023, we have had the benefit of seven decades of relative social progress to understand the limitations of how institutions have been imagined in relationship to the communities in which they are embedded, and to the land on which they sit. We might see a kind of fracturing as a byproduct of institutional identification where these limitations create a false barrier around who is identified as a community and who sits outside of it; and even in the case of Skowhegan, where the land is part of the experience but its purpose is driven solely by our need.

We would be doing a disservice to our primary mission—the education of artists—by thinking in binaries—the *either/or* of putting artists first or listening to the land, and the history of the land, or dissolving the who and why that gathers. But it can be a *both/and*, if done thoughtfully, holistically, and with deep self-reflection on capacity and priorities—that keeps our program whole and evolving, but also positively impacts our community outside of the nine weeks. We have begun this work in practical ways—like investing our resources into our local economy through the food we purchase and how we determine workflow to support local investments. We have spent the past two years working on the





Flex Space with OPAL Architecture, a Belfast, Maine based firm, who not only prioritizes sustainable building practices but is also partnered with GO LAB, Inc, which has innovated a proprietary, sustainable wood fiber insulation in a formerly closed paper mill in our very own town of Madison bringing both jobs and a new economic contributor. Last summer, Skowhegan partnered with two active citizen groups, the Lake Wesserunnett Association and the Somerset Woods Trustees to act as a conservation buyer to keep a critical piece of delicate wetlands from development and place it in a land trust so that it may be protected in perpetuity, and the work that Wetlands do in protecting our flora and fauna is accessible to all. Funds will be reimbursed to Skowhegan through fundraising from state and federal funds that are earmarked for this purpose, but the purchase itself was urgent.

One great thing about Skowhegan that is also evident in this campaign report is that we are planners. We plan for the organization long-term, and we plan for each summer so that what can't be planned for can be the thrilling focus for the participants on site. And in a moment of bragging, we do it thoughtfully and collaboratively to create sustainable models, to have the ability to be inventive, responsive, and to experiment. As an educational space for artists committed to promoting creative practice, we can do that work through Painting & Sculpture and we can also do that work through organizational collaboration to address the conditions that surround, uplift, and oftentimes limit our lives and bodies. It is inherently the same project and each is made richer by the other. Skowhegan has a reputation as a transformational experience for artists for a reason—and what we can do for artists, we can do for the organization itself and for those around us.

This work isn't mission drift. Stewardship and pedagogy aren't mutually exclusive (again the *both/and*). As an institution with a historic precedent and commitment, set by our founders, to promoting equity (in its various definitions over 70 years), we can act as institutional leaders in not just securing equity for ourselves but also for the land and the communities in which we exist. Our location is our identity, our innovation is the work we ask all of our artists to do, our commitment to equity cannot just be modeled for our own care, but has to include care for others, and our home community, which affects our participants regardless of their temporary stay on our campus. Our larger cultural mandate in 2023, in many institutions, is to consider and to enact equity. As we engage in the long-term ever-evolving work around equity to those internal to the organization, how do we meaningfully do that work with our neighbors, with indigenous communities; how do we holistically understand our organizational priorities as multi-directional—internal and external—to change how the future might look not just for ourselves but for our collective humanity.





2022 Participants

Samar Al Summary
 Marcel Alcalá
 Miguel Braceli
 Carlos Casuso Alvarez
 Peggy Chiang
 Noelle Choy
 chukwumaa
 Mo Costello
 Mairead Delaney
 Marcus Dunn
 Sam Finkelstein
 Chelsea Flowers
 Leslie Foster
 Larissa Garcia

Ina Gerken
 Adrian González
 Joe Harjo
 Patrice Helmar
 Elizabeth Hibbard
 Angela Hoener
 Keith Jackson
 Ellis Jane
 Paul-Sebastian Japaz
 Carolina Maki Kitagawa Frisby
 Jemila MacEwan
 Keli Maksud
 Jennifer Martin
 Felli Maynard

Dominic Musa
 Renana Neuman
 Gozie Ojini
 Javier Orfon
 Andrea Ottenwalder
 Prerna
 Jamaal Peterman
 Malik Purvis
 Alicia Reyes McNamara
 Amina Ross
 Eugenio Salas
 Abed Shalabi
 Anoushé Shojae-Chaghorvand
 Katz Tepper

Jesus Treviño
 Israel Urmeer
 Freddy Villalobos
 Kushala Vora
 lexi welch
 Alexander Richard Wilson
 Jordan Wong
 Derrick Woods-Morrow
 Areum Yang
 Livien Yin
 Crys Yin
 Zhidong Zhang

2022 Faculty

Resident Artists
 Abigail DeVille (A '07)
 Kota Ezawa
 Gordon Hall (A '13)
 Suzanne McClelland (F '99)
 Kukuli Velarde

Visiting Artists
 Basel Abbas &
 Ruanne Abou-Rahme
 Morgan Bassichis
 Lonnie Holley
 Troy Montes Michie (A '15)

Sam Moyer
 Beatriz Santiago Muñoz

Paul Mellon Distinguished Fellow
 Linda Goode Bryant









OFF CAMPUS PROGRAMS

Conference Call

CONFERENCE CALL is a series of five 2-person exhibitions that ran from May through November 2022. Organized by the Alumni Alliance, the series featured works by Skowhegan alumni and took place at the Skowhegan New York space.

The magic of Skowhegan for me is about possibility and community. These two powerful words are symbiotic. Possibilities create a stronger community. A stronger community creates more possibilities. This symbiotic process is a key ingredient of what makes Skowhegan, Skowhegan. The Alliance for me has always been about finding a way to extend the magic of Skowhegan for alumni beyond the physical limitations of their summer.

There have been many amazing projects that the Alliance has undertaken to create opportunities in service of our alumni community. This past summer the Skowhegan Alliance took on an extra ambitious project.

CONFERENCE CALL was a series of two-person exhibitions that took place in Skowhegan's office space in New York. The goal was to provide our alumni with an opportunity to show work in a more in-depth way, while navigating the unusual space that is the ever-busy Skowhegan office.

Skowhegan alumni are the best kind of artist to me. They are ambitious in their personal practice, and they have the experience of knowing how important community is. Personally, getting to directly work with artists like **Pío Galbis** and **Buster Graybill** was an incredible experience. Seeing how happy they were with the outcome of their exhibition is what makes being on the Alliance so rewarding. Then getting to see the other incredible two-person exhibitions put together by the other amazing Alliance members, alumni, and Skowhegan Alumni & Archives Manager, **Paige Laino**, is the cherry on the sundae.

Art is the beauty found in the failure of language. That which cannot be articulated by language alone. It is an uncertain gesture made certain via its expression from one to another. These exhibitions succeeded in creating that impossible, beautiful dialog between these artists—who spanned generations—to find a bigger conversation with their audiences in an office space. Thank you so much **Hetty Baiz** (A '69), **Pío Galbis** (A '82, '21), **Buster Graybill** (A '07), **Gwendolyn Kerber** (A '79), **Baxter Koziol** (A '17), **Rocío Olivares** (A '18), **Jordan Seaberry** (A '15), **Pallavi Singh** (A '15), **Molly Springfield** (A '06), and **Jing (Ellen) Xu** (A '16) for sharing your work in the complicated space.

Thank you as well to our Alliance members for taking on the challenge of putting on this exhibition series: **Annette Cyr** (A '76, '21), **Danny Greenberg** (A '18), **Eleanor Kipping** (A '18), **Paige Laino** (Alumni & Archives Manager), **Michael Scoggins** (A '03), and **Rebecca Shippee** (A '18).

Somehow together, in ways we can't properly articulate, we all did it.

—Jesus Benavente (A '12)

Pío Galbis (A '82, '21) & Buster Graybill (A '07)

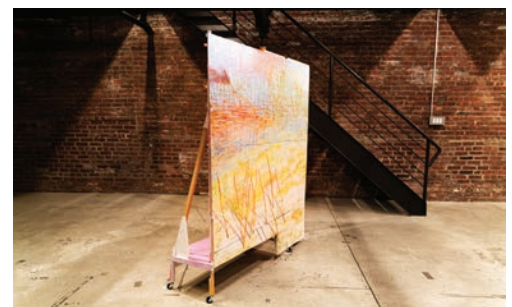
Organized by Jesus Benavente (A '12)
May 18–June 9, 2022



Left-right: Installation view of *CONFERENCE CALL | Pío Galbis and Buster Graybill*; Buster Graybill, *Deep Woods (2018)*, vintage lawn chair webbing on wood panel with Off! insect repellent, and fishing corks, 21 x 12 inches.

Gwendolyn Kerber (A '79) & Rocío Olivares (A '18)

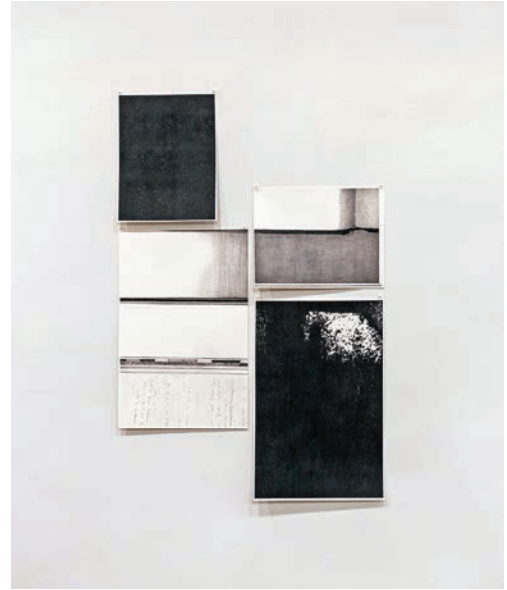
Curated by Annette Cyr (A '76, '21) & Rebecca Shippee (A '18)
June 23–July 22, 2022



Left: Installation view of *CONFERENCE CALL | Waterways* with Gwendolyn Kerber and Rocío Olivares. Right (top): Rocío Olivares, *Templates VIII (2022)*, intaglio over Tetrapack (Grabado Verde), 15 x 12 inches; (bottom) Gwendolyn Kerber, *Standing in Water VI (2018)*, oil and acrylic on wood, wheels, 59 x 59 x 16 inches.

Baxter Koziol (A '17) & Molly Springfield (A '06)

Curated by Michael Scoggins (A '03)
August 4–August 25, 2022



Left-right: Installation view of *CONFERENCE CALL* | Molly Springfield and Baxter Koziol; Molly Springfield, *Errata 05.24.22* (2022), graphite on paper, 16.5 x 25.5 inches.

Pallavi Singh (A '15) & Jing (Ellen) Xu (A '16)

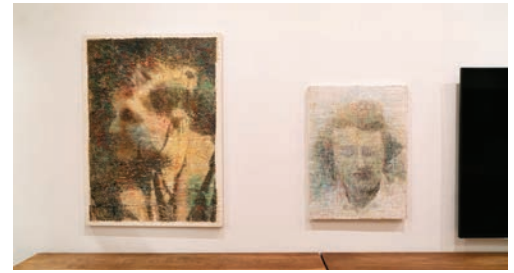
Curated by Danny Greenberg (A '18) & Eleanor Kipping (A '18)
September 8–September 30, 2022



Left: Installation view of Pallavi Singh (*l-r*) *Hypno Bazaar*, acrylic, watercolor, color pencil, chai on paper, (6) 29.5 x 21.5 inches, each; *The Fall*, watercolor, sticker, chai on paper, (6) 10.4 x 14.5 inches, each; Right (top): Jing (Ellen) Xu, *Flung out of Space*, 101 permanent marker drawings on east wall; Bottom: Jing (Ellen) Xu, *Turn right*, acrylic, modeling clay, 36 x 24 x 3 inches; (*tbc orange 2*), acrylic, modeling clay, 8.5 x 8.5 inches; (*tbc orange 1*), acrylic, modeling clay, 8.5 x 8.5 inches.

Hetty Baiz (A '69) & Jordan Seaberry (A '15)

Curated by Paige Laino
October 12–November 19, 2022



Left: Installation view of *CONFERENCE CALL | Hetty Baiz and Jordan Seaberry*; Right (top): Hetty Baiz, *Original face #5*, woven paper & jute, ink, oil pastel, acrylic on canvas, 44 x 32 inches; *Original Face #4*, woven paper & jute, ink, oil, pastel, acrylic on canvas, 30 x 24 inches; Bottom: Jordan Seaberry, *The American Flag*, acrylic, collage and mixed media on canvas, 52 x 44 inches.



Clockwise (bottom left): Guests attend a *Survival Taco Brunch* event in front of Buster Graybill's *R.MUTT (Renegade Modernist Utility Travel Trailer)*; During the installation of *CONFERENCE CALL | Hetty Baiz and Jordan Seaberry*; During the installation of *CONFERENCE CALL | Molly Springfield and Baxter Koziol*; Jing (Ellen) Xu working on the installation of *I will be gone on 9/30*.



Returning

Katie Sonnenborn, Co-Director

Peruse through this journal and it's evident that 2022 was a great year for Skowhegan, a homecoming of sorts. We fully reopened the campus for participants, faculty and staff who made use of new facilities built during the pandemic including the Driskell House, the Kippy Stroud and Twin As Cottages, and the Gund Dining Hall. The Alumni Alliance organized five intergenerational exhibitions at our space in New York; we held two massive celebrations—the 75th Anniversary Benefit in April and the 2022 Awards Dinner in October; and welcomed Sharon Corwin to the board of Trustees.

At a recent conversation between author Anand Giridharadas and Darren Walker, President of the Ford Foundation, about the state of American democracy I was struck by Giridharadas' persistent optimism. Even with setbacks, adversity, and divisiveness, he could see a path towards a nation that works better for more people, a way marked by persuasion and the fundamental belief that people can change. It reminded me of what I love most about Skowhegan, and what I saw return in full effect in 2022—its hopefulness. Campus is a space of possibility, the result of successive generations of people, mostly artists, who have committed themselves to nurturing a different kind of art school that, among other things, works to bridge differences between artists without shared histories. Long before it was common practice, Skowhegan welcomed artists of different races, ethnicities, sexual orientations, and genders, guided by the knowledge that when artists live and work and learn together, transformative experiences can unfold.

Returning to the full program in 2022 was also particularly meaningful because it coincided with the conclusion of the 75th Anniversary Campaign, our generation's opportunity to fortify Skowhegan's values and goals and address the critical challenges of our time. Skowhegan had taken on previous campaigns at other junctions. In 1962, the school closed for a summer to take stock—programmatically and pragmatically—in response to a devastating fire that destroyed the Fresco barn. When the campus reopened in 1963 grants including one from Paul Mellon's Old Dominion Foundation helped pave the way. In the late 1980s, a building fund and endowment were established, much of it sponsored by the prodigious proceeds of Vincent Van Gogh's *Irises* from 1889, sold at Sotheby's by art dealer John Whitney Payson, then Chair of Skowhegan's Board of Trustees. And in the mid-1990s, Skowhegan's 50th Anniversary, a campaign was launched to raise scholarships and faculty funds, an act of affirmation towards Skowhegan's founding history of inclusivity, and admissions based on talent and potential, not financial, educational or professional circumstance.

The 75th builds on these successes: upgrading the campus facilities to provide more equitable housing; to engage emerging art practices; and to grow the endowment to preserve need-blind admissions and artistic autonomy. But it also deepens them and expands Skowhegan's institutional capacity including prioritizing local investments that bolster regional food economies and environmental priorities, and sponsoring the first publication on Skowhegan's history and impact. The goals for the 75th are inspired by, and in turn nurture, a more robust program staff dedicated to grounds and maintenance, residential life, and mental health; as well as administrative staff devoted to archives and alumni programs, fundraising, and communications. We remain a small team, but the exponential impact of adding several talented people enables a meaningful jump in the depth of our programmatic reach. As Sarah details in her essay, there is more capacity for interconnection with site, along with public and alumni projects, and fundraising and community initiatives that sustain our mission and foster connections.

While a campaign is about raising money—and the financial impact of the 75th Anniversary is a fulcrum to Skowhegan's artistic freedom—it is also about solidifying a community. The names listed on the following pages and in the 75th Report are nothing short of spectacular, an incredible roster of alumni, faculty, board members and allies who shared treasure and talent to help Skowhegan. We are beyond grateful for this trust and partnership in this program.

Today, the work continues. It goes deeper. We nurture connections to place and environment; we publish a major book on Skowhegan's history by Faye Hirsch and Ingrid Schaffner; we facilitate links between alumni and likeminded colleagues, such as the spring 2023 partnership with the New York Public Library to share access to special collections; we connect artists and supporters through the Skowhegan Council programs; and we use our Awards Dinner to shine a light on those individuals whose leadership, bravery and generosity transforms contemporary art—such as artist and musician Lonnie Holley (F '22) and philanthropist Suzanne Deal Booth—who we will honor this fall. Most importantly, we retain space for growth and change so that Skowhegan remains nimble and responsive to the needs of artists, and future generations are able to address the challenges of their moment with fortitude and care.

SUPPORT

Thank You!

Skowhegan gratefully acknowledges the following donors whose commitment to supporting the future of artmaking made Skowhegan's programs possible.

A – Alumni

F – Faculty

Gifts received during FY2022

UNDERWRITER

Anonymous

Anna-Maria and Stephen Kellen Foundation

LEADERSHIP

Estate of Mildred C. Brinn

Darren Walker / Ford Foundation

Andrew W. Mellon Foundation

BENEFACTOR

Anonymous (2)

Eleanor Acquavella / Acquavella Family Foundation
The Alex Katz Foundation

The Horace W. Goldsmith Foundation
Dorothy Lichtenstein
Bernard I. Lumpkin & Carmine D. Boccuzzi

National Endowment for the Arts
Greg & Susie Palm
BB & Jud Reis
Ruth Foundation For The Arts
Paula J. Volent

SPONSOR

Jan Aronson & Dominique Finas
The Blavatnik Family Foundation
The Brown Foundation, Inc. of Houston
Deborah Buck Foundation / Deborah Jones Buck (A '75)
Patsy & Ron Buckley
Linda A. & John R. Coleman / The VIA Agency

Warren & Brammie Cook
Agnes Gund
Ann & Graham Gund
Helen Frankenthaler Foundation
Elizabeth R. Hilpman & Byron Tucker
Rena & Scott Hoffman
Stephanie Hunt & Stephen Trevor
Victoria Love Salnikoff

Alexander F. Milliken
Jennifer & Jason New
Estate of Renee A. Simon, in honor of *Sidney Simon*
The Pollock-Krasner Foundation
Akila Raman-Vaseghi, in honor of *Amitha Raman*
Amitha Raman & Neil Luthra
John J. Studzinski, CBE
Dian Woodner

PARTNER

Anonymous (3)
Sarah Arison
Louise & Sidney Banon in honor of *Rena Hoffman*
Janet Inskeep Benton
Bloomberg Philanthropies
The Bonnie Cashin Fund, in memory of *Henry Grady & Jack Eastman*
Deborah & Richard Bom, in honor of *Rena Hoffman*
Laura Burton & Owen Duffy

Barbara Bertozzi Castelli / Castelli Gallery
Audry X. Casusol
Jung & Nelson Chai
Circle Wealth Management
Sharon Corwin
Fairfax Dom & Marc Glimcher
Adeline F. Kempner (A '83)
Amy Feldman (A '09) & Zach Bruder
Gagosian
Katherine Gass Stowe / James Company Contemporary
Art Projects

David A. Greene, President, Colby College
halley k harrisburg & Michael Rosenfeld / Michael Rosenfeld Gallery
The Holly Peterson Foundation
Tracey Hummer
James Cohan Gallery
Kate W. Cassidy Foundation
Keith Fox & Thomas Keyes
The Ronald & Jo Carole Lauder Foundation
Gwendolyn Knight
Lawrence Trust



Livien Yin (A '22) during a studio visit with **Paula Volent** and **Elizabeth Hilpman** on campus; *Skowhegan 75 Salon: Portland* featuring a conversation about Fluxus, time capsules and ephemera with **Anne Collins Goodyear**, **Mark H.C. Bessire**, and **Marc Swanson** (A '00, F '14) in Portland, ME.

SUPPORTER

Anonymous / New York Community Trust
Morgan Aguiar-Lucander
Phil Alexandre
Desiree Almodovar
Curtis R. & Kim C. Artis, in honor of *Ashley Artis*

Roland Augustine
Elizabeth G. Await (A '77)
Guy Barron
Arlene Bascom / Green-Wood
Skip & Michaela Beitzel, in memory of *David Beitzel* (A '82)
Susanna R. Bergtold (A '67)

Dike Blair (A '74, F '12)
Lucy Bowen & Richard Sites, in honor of *Calvin Douglass* (A '54)
Daniel Bozhkov (A '90, F '11, '16)
Sara Bright (A '10)
Susan Cahan & Jurgen Bank

Edwin Cahill
Francis Cape (A '89, F '08) & Liza Phillips (A '89)
Janis Gardner Cecil
Ashley Chavis
Andrea Crane

Lucy F. Currie (A '82), in honor of *Lavona Stringer Currie*
Jodi & Andrew Dady
Sharon Davis
Suzanne Deal Booth
Jonathan Denly
Jocelyne & David DeNunzio

75th Anniversary Benefit Celebration

Edith Dicconson
 Tracy DiLeo (A '82)
 Kathleen Dill
 Stephen Dougherty
 Chiara Edmands
 Constance Evans, *in memory of Bill King* (A '48, '51, '52, F '67, '75, '77, '82)
 Farnsworth Art Museum
 Anoka Farooqee (A '95, F '10)
 Tom Finkelppearl & Eugenie Tsai
 Susan Paul Firestone (A '72)
 Jeanne Donovan Fisher
 The Florence V. Burden Foundation
 Sara Friedlander
 John H. Friedman
 Timur Galen & Linda Genereux
 Robert & Rae Gilson
 Elizabeth Goldberg
 Amy Goldrich & Nick Kline
 David & Samantha Goldring
 Anne Collins Goodyear & Frank H. Goodyear
 Alexander Gorlin
 Nicolas Grabar & Jennifer Sage
 Henry C. Greenewalt (A '89)
 Andrew Hamill (A '14)
 Jane Hammond (F '92, '05)
 Hauser & Wirth, New York
 Kate Haw
 Patricia Hickson
 Tishan Hsu (F '96)
 Lyndsey Ingram
 Stephen Javaras
 Rachel & Michael Judlowe
 Noel D. Kimon
 Jill G. & Peter S. Kraus
 Carlene Laughlin
 Raymond J. Leary
 Michael & Marjorie Levine
 Glenn Ligon (F '98, '15)
 Laura Lobdell (A '99)
 Robert L. Looker / The Looker Foundation
 Glenn D. & Susan Lowry, *in honor of Ann Gund & Byron Kim*
 Sharon Madanes (A '14) & Benjamin B. Beinecke
 Marlene McCarty (F '11)
 Joanna Migdal, *in honor of Elizabeth Hilpman & Rachel Simon*
 Donald Moffet (F '04) & Robert Gober (F '94, '16)

DC Moore Gallery
 Rebecca Moore
 Edouard Mulot
 Bonnie S. Newman (A '82)
 Valerie O'Halloran
 Walter O'Neill (A '74, '21, F '87, '97)
 Tom Oldham
 Gabriela Palmieri
 Elizabeth Fearon Pepperman
 Sam Plimpton & Wendy Shattuck / Plimpton-Shattuck Fund, *in honor of Ann Gund*
 The Edward Page Crane Designated Fund
 Marquita Pool-Eckert & Knut Eckert
 Joseph Pullen & Ray Volant
 Aima Raza
 Yael Reinharz
 David & Susan Rockefeller
 Mr. & Mrs. John M. Roth
 Peter Rothschild
 Alison Saar (F '93), *in honor of David C. Driskell*
 Christian Scheidemann
 Carrie Schneider (A '07)
 Carole Server & Oliver Frankel
 Steve Shane, *in memory of Sonia Shaenboen*
 Joel Shapiro (F '76, '80)
 Arlene Schechet (F '12)
 Elizabeth Sidamon-Eristoff (A '85)
 Rebecca Ann Siegel
 Jennifer & Richard Siegel
 Nicholas Silvers & Katie Zorn
 Mark Simon
 Hunt Slonem (A '72)
 Donald E. & Vivian S. Sonnenborn
 Molly Springfield (A '06)
 Christian Spruell (A '96)
 Robert V. Storr (A '78, F '02)
 Do Ho Suh (A '93)
 Morgan & Bobbi Sze
 Jacqueline Terrassa, Colby College Museum of Art
 Yulia Topchly
 Rosa Valado (A '89, '21)
 Paula Wardynski
 Sheri Warshauer (A '02)
 Austin White (A '14), *in honor of the Class of 2014*
 Merele Williams-Adkins
 Cecilia & Ira Wolfson
 Adnan Zaidi

Rainbow Room, New York | April 4, 2022 Co-chaired by Eleanor Acquavella, Donald Moffett (F '04), Howardena Pindell (F '80), Paula J. Volent, and Alan Wanzenberg. Festive toast to Ann L. Gund, *Chair, Board of Trustees* (1998–2022) with special guests Matthew Teitelbaum, *Ann and Graham Gund Director, Museum Of Fine Arts, Boston*, David Antonio Cruz (A '06, '21), performance by Norm Lewis.



01 Elle Pérez (A '15), Deana Haggag, Angela Goding 02 Dominique Finas, Ann Gund, Jan Aronson 03 David Antonio Cruz (A '06, '21) 04 Meredith James (A '11), Lucas Blalock (A '11) 05 Rainbow Room, NYC 06 Cati Vlad, Morgan Aguiar-Lucander 07 Sarah Arison, Agnes Gund 08 Eleanor Acquavella, Paula Volent 09 Troy Montes Michie (A '15, F '22), Jeanine Oleson (A '00, F '18) 10 Fred Wilson (F '95), Matthew Teitelbaum

FRIEND

Negar Ahkami (A '04)
 Becca Albee (A '99)
 Kitty Alward (A '83, '21)
 Betsy Alwin (A '01), *in memory of Ryan Widger* (A '06)
 Candida Alvarez (A '81)
 Amazon Smile Charitable Fund
 Judith Amdur (A '73)
 The Armory Show
 Richard Armstrong

Arts FMS
 Artspace, LLC
 Patricia Ayres (A '19)
 Donald Baechler (F '94)
 Hetty Baiz (A '69)
 Emily P. Bakemeier, *in honor of Byron Kim*
 Cerie Bamford
 Paul Banas (A '74)
 Chelsea R. Beck (A '08)

Sarah Bedford (A '97)
 Dozier Bell (A '85)
 Jesus Benavente (A '12)
 Jamie L. Bennett
 Christy Bergland (A '68)
 Michael Berman (A '92)
 Kathryn & Charles Bery
 A. Robert Birmelin (A '54, F '67)
 Claudia Bitran (A '14), *in honor of the Class of 2014*

Tei Blow (A '14), *in honor of Sean McElroy* (A '14)
 Sylvia Farrer Bomarth, *in memory of Philip W. Bomarth* (A '51, '52)
 Richard F. Bough (A '78)
 Clair Bradstreet, *in memory of Sandra Strahan* (A '83)
 Rita & Charles Bronfman, *in honor of Jan Aronson*

Teresa Booth Brown (A '88)
 Rachel Buckley
 Kenneth Buhler (A '76)
 Ayesha Bulchandani
 Polly Jane Carpenter (A '75)
 Christopher Carroll (A '08)
 Albert Cavallaro (A '82)
 Milano Chow (A '13)
 Marina Chisty
 Lauren Cohen (A '10)

Thank You, Ann & Alan!

2022 was a year of returns, of being back together in person, to learn, to work, to celebrate and socialize. At Skowhegan, we held two amazing parties—the 75th Anniversary Benefit Celebration (postponed from 2021) and the 2022 Awards Dinner. At each we toasted a true leader: long-time Board Chair Ann Gund and President Alan Wanzenberg respectively, as each stepped down from their posts and Eleanor Acquavella and Paula Volent assumed the leadership roles.

Ann's history with Skowhegan dates to 1975 and her first responsibilities on the Junior Committee where she helped organize a legendary party in which an elephant paraded among costumed revelers at the Park Avenue Armory. She joined the Board in 1979, and was named Chair in 1998, a role she served for 24 years to the great benefit of more than 1,500 artists who attended Skowhegan during her tenure. Ann led Skowhegan with care, generosity and vision, demonstrating how to embrace change while sustaining Skowhegan's founding principles and unique spirit. As a leader, she was a true champion with most recently leading the school through a Capital Campaign, a Master Facilities Plan, and a global pandemic. Her instincts are second to none, and her contributions will have a lasting impact on Skowhegan, its campus, and future generations of artists.

A Trustee since 2009, Alan's impact accelerated through the Buildings & Grounds Committee (established 2012) which he co-chaired for several years. As President of the Board of Trustees (2016–2022), Alan always approached the organization and its needs with a telescopic understanding of the program and institutional functioning. Alan brought this holistic approach to his role in the development of the Master Plan, ultimately sharing his talents with the school by designing seven buildings—including the David Driskell House and the Gund Dining Hall—which were built during COVID. Constructed in partnership with Facilities Director Bill Holmes, these masterful contributions elevate the residential experience with simplicity and exceptional functionality, and reflect Alan's celebrated ability to create buildings that strike the perfect balance between history and future possibilities.



Left-right: Ann Gund on campus during the Trustees & Governors weekend in 2012; Ann during Skowhegan's 2016 Awards Dinner at The Plaza, New York.



Left-right: Alan Wanzenberg during Skowhegan's 2022 Awards Dinner at Gaustavino's, New York; Alan on campus in 2019.



Sue Collier (A '79)
 Maurice Colton III (A '70)
 Donna Conlon (A '02)
 Paul Cossu
 Heather Cox (A '97)
 Martin Cox, *in memory of Laurie Hickman Cox* (A '84)
 Alan Crichton (A '82), *in memory of Joe Ascrizzi*
 Patricia Cronin (A '91)
 David Antonio Cruz (A '06, '21)
 Megan Cump (A '00)
 Xavier Jose Cunilleras (A '13)
 Greg Curry (A '85)
 Jacqueline Davidson (A '58)
 Efrain De Jesus (A '75), *in memory of Joan Franzen*
 Esteban del Valle (A '11)
 Stephanie Diamond (A '00)
 Dianne J. Dickeman (A '84)
 David Michael DiGregorio (A '02)
 Tim Doud (A '92)
 Jim Dowdalls (A '78)

Kerry Downey (A '17)
 Sam Doyon
 Craig Drennen (A '06)
 Jennifer Dudley (A '06)
 Angela Dufresne (F '17), *in honor of Dawn Clements*
 Christopher Dunbar (A '91)
 Marcus Dunn (A '22)
 Linda Earle, *in memory of Emma Amos & in honor of Byron Kim*
 Ellen Levine Ebert (A '66)
 June C. Edmonds (A '82)
 Jonathan Ehrenberg (A '11)
 Sara Eliassen (A '10)
 Catherine Fairbanks (A '11), *in memory of Anne Bratton Bohlke*
 Gordon Fearey (A '73)
 Ann B. Feitelson (A '76)
 Ash Ferlito (A '12)
 Ruth Fine (A '61)

Aaron Fink (A '76), *in honor of Dorothy Lichtenstein & Ann Gund*
 Sam Finkelstein (A '22)
 Sharon Fishel (A '86), *in memory of Jerome Fishel*
 Peter K. Flaccus (A '68, F '78)
 Robert N. Flynt (A '74, '76)
 Julia Fowler
 Robert Franca (A '72, '21)
 James Benjamin Franklin (A '94)
 Lynda Frese (A '85)
 Jon R. Friedman (A '69), *in memory of David Shapiro*
 Victoria Fu (A '06) & Matthew T. Rich (A '10)
 Jane F. Gagne (A '80)
 Robert Gainer (A '63)
 Lilian Garcia-Roig (A '90)
 John Germain (A '76)
 Andrew Ginzel (F '98)
 Helen Glazer (A '75)
 Lawrence Gleeson (A '94)
 Neil Goldberg (F '15)



Screenshot from Skowhegan Bird Club with **Payal Mehta** on *Birds of India: Hot and Cold Deserts* on Zoom; Guests during the opening reception for **CONFERENCE CALL | Pallavi Singh & Jing (Ellen) Xu** at Skowhegan's office in New York City.

Artist Editions

Thank you **Katherine Bradford** (F '09) for creating *Couple on the Edge of the Sea, 2022* to benefit Skowhegan. Find other available works on our website.



Katherine Bradford (F '09), *Couple on the Edge of the Sea, 2022*, archival pigment print with acrylic hand embellishments made by the artist, 18 x 22 inches.

Ana María Gómez López (A '15)
 María Elena González (F '05)
 Colleen Graham
 Sophie Grant (A '15)
 Phillip M. Grausman (A '56, '57, F '73)
 Stanley & Megan Green
 Francis Greenburger
 Nicolas Grenier (A '16)
 Clare Grill (A '11) & William Ryan
 Karl Haendel (A '00)
 Kathy Halbreich (A '65)
 Josephine Halvorson (F '18)
 Bang Geul Han (A '07)
 Mookwon Han (A '08, '21)
 Jessica Hankey (A '15)
 Stephen Hannock, *in memory of Frank Moore* (A '73, F '98)
 Gail A. Hansberry (A '60)
 Abbey Williams (A '04) & Dave Hardy (A '04, F '18)
 Joseph Harjo (A '22)
 Connie Hayes (A '89)
 Kamron Hazel (A '19)
 Stefanie Heinze (A '16)
 Ralph Helmick (A '79)
 Mike Henderson (A '68)
 Carol Hendrickson (A '71)
 Shelley Herman (A '66), *in memory of Marcia Green Gardere*
 Jamie Hine
 Caroline Hoffman
 Susan Homer (A '93)
 John Hulsey (A '18)
 Christina Hutchings (A '77)
 James Hyde (F '03)
 Amy D. Podmore (A '86) & Frank Jackson (A '85)
 Michael L. Jackson (A '79), *in memory of John Egner*
 Lois Johnson (A '96)
 Jennie C. Jones (A '96, F '14), *in memory of Sylvia G. Jones "Mitzi"*
 Mary Judge (A '74)
 James D. Julia
 Peter Kahng
 Jessica Kain (A '12)
 Neil Kalmanson (A '63), *in memory of Calvin Albert* (F '63)
 Kari Kaplan Rives (A '82)
 Annetta Kapon (A '92)
 Nils Karsten (A '02)
 Mindi Katzman (A '84), *in memory of Ingrid Muan* (A '86)
 Timothy E. Kennedy (A '79, '80)
 Gwendolyn Kerber (A '79)

2022 Awards Dinner

Guastavino's, New York | October 26, 2022 Co-chaired by Janine Antoni (F '98), Bernard I. Lumpkin & Carmine D. Boccuzzi, Victoria Fu (A '06), BB & Jud Reis, and Paula Volent. After-Party co-chaired by Morgan Aguiar-Lucander, Desiree Almodovar, Ashley Artis, Chase Hall (A '19), Ashley Teamer (A '14), and Jasmine Wahi. Honoring the Roy Lichtenstein Foundation & Jack Cowart, founding executive director with the *Gertrude Vanderbilt Whitney Award for Outstanding Patronage of the Arts*, presented by Carmen Winant (A '10); and Byron Kim (A '86, F '99, '13) with the *Skowhegan Medal for Painting* presented by Glenn Ligon (F '98, '15).



01 Byron Kim (A '86, F '99, '13) 02 Guastavino's, NYC 03 Chase Hall (A '19), Jeffrey Meris (A '19), Shala Miller (A '17), Ally Caple (A '19) 04 Jennie C. Jones (A '96, F '14) 05 Sarah Workneh, Katie Sonnenborn 06 Barbara Gundlach, Stephanie Hunt, Bernard Lumpkin 07 John Coleman, William Eric Brown, Linda Coleman, John Melick 08 Niks + Aku 09 T De Long, James Hoff, Lia Gangitano (A '07) 10 Jack Cowart 11 Mel Chin (F '95), Lan Tuazon (F '19), Marie Lorenz (A '04, F '13), Glenn Ligon (F '98, F '15), Janine Antoni (F '98) 12 Clara Ha, J A Feng (A '16), Carrie Schneider (A '07), Darla Mignan, Candice Madey, Julia Haft-Candell (A '16) 13 Derrick Adams (A '02, F '13), María Elena González (F '05), Arlene Bascom 14 Kilo Kish 15 Koji Inoue, Ann Gund, Paula Volent, Graham Gund 16 Emanuelle Kihm, Carmen Winant (A '10), Odili Donald Odita (F '15) 17 Addee Kim, Lisa Sigal (A '86, F '06), Emmett Kim 18 Ruth Fine (A '61) 19 Byron Kim (A '86, F '99, '13), Glenn Ligon (F '98, '15) 20 Claudia Bitran (A '14), Sharon Madanes (A '14) 21 Anoka Faruqee (A '95, F '10), Victoria Love Salnikoff, Suzanne McClelland (F '99, '22) 22 Elizabeth Hilpman, Edwin Cahill, Anne Collins Goodyear 23 Guastavino's, NYC



Guadalupe Maravilla (A '09) with guests during an exhibition walk-through and discussion of *Guadalupe Maravilla: Luz y fuerza* at Museum of Modern Art in New York City.

Hasabie Kidanu (A '17)
 James Kielkopf (A '64)
 Patrick Killoran (A '98), in
memory of Bernarda Shahn
 Kyle Kilty (A '02)
 Irene Kim
 Megan Kincheloe (A '13, '21)
 Becky Kinder (A '04, '21)
 Patricia A. Kirshner (A '78)
 Kenneth F. Koen, in *memory of*
David Beitzel (A '82)
 Ai-Wen J. Kratz (A '67)
 Guillermo Kuitca (F '99, '04)
 Anna Kunz (A '09)
 Wendy F. Lang (A '54, '55, '56)
 Heidi Lange, in *memory of*
David C. Driskell
 Annette Lawrence (A '96)
 Nick Lawrence (A '83),
 Freight + Volume
 Peter O. Lawson-Johnston
 Rachel Lee, in *honor of the*
Skowhegan office staff
 David Leggett (A '10)
 Lihua Lei (A '98, '21)
 Shaun Leonardo (A '04)
 Larry Levine, in *honor of*
Byron Kim & the
Roy Lichtenstein Foundation
 Maggie Libby (A '87)
 Joan Linder (A '99)
 Judith Linhares (F '17)
 Dana Lok (A '16)
 Nan Hall Lombardi (A '88)
 Nicola Lopez (A '02)
 Angela Lorenz (F '07) &
 Jeff Williams
 Marie Lorenz (A '04, F '13)

Robert MacDonald (A '96)
 Michelle Mantua (A '16)
 Lisa Marin, in *honor of*
Norma & John C. Marin Jr.
 Megan Marlatt (A '85, '21)
 Virgil Marti (A '90, F '12) &
 Peter Barberie, in *honor of*
Lisa Sigal & Byron Kim
 Emily Mast (A '06)
 Natasha Mayers (A '76)
 Lily McElroy (A '06)
 Julie McGee, in *honor of*
David C. Driskell & Family
 Mr. & Mrs. James H.
 McGraw IV
 Dave McKenzie (A '00, F '11) &
 Anissa Mack (A '99, F '11)
 Mores McWreath (A '13)
 Perry Meigs (A '98)
 Emil A. Mellow II (A '78)
 Josephine A. Merck (A '68, '73)
 Melissa Meyer (F '02)
 Robert Meyer
 Ander Mikalson (A '12)
 Tracy Miller (A '92)
 Kathryn Miyawaki
 Nancy Modlin Katz (A '78), in
memory of James McGarrell
 (A '53, F '64, '68)
 Luke Moffett
 Jennifer Monick (A '99)
 Regina Morales
 Simonetta Moro (A '03)
 Carrie Moyer (A '95, F '10)
 Bridget Mullen (A '16)
 Suzanne Murphy, in *honor of*
Paula Volent
 Joyce & George Mykoniatis

Yuta Nakajima
 Rebecca Ness
 Eliza Newman-Saul (A '05)
 Robert Nicholson
 John J. O'Connor (A '00)
 Michael O'Malley (A '98, '21)
 Jordyn Oetken (A '13)
 James Scott Ogden (A '96)
 Margaux Ogden (A '11)
 Gozie Ojini (A '22)
 Jeanine Oleson (A '00, F '18)
 Nicholas Opinsky
 Carol P. Mugford (A '78)
 Maia Cruz Palleo (A '15)
 Jane Panetta & Jan Postma, in
honor of The Postma (SC,
DC) & Easley (NC) Families
 Grant & Lindsay Parmer, in
honor of Donald Moffett
 Alix Pearlstein (F '04) &
 Bill Adams (A '80, F '04)
 Hilary Peck
 Susan M. & John Pelosi
 Sheila Pepe (A '94, F '13)
 Darrell Petit (A '88)
 Howardena Pindell (F '80)
 Thomas Powel, Jr. (A '85)
 Charlotte Present (A '66)
 Rebecca Quoytman (A '82)
 Julie Quon
 Andrew Radcliffe (A '84)
 Jagdeep Raina (A '17)
 Richard Raiselis (A '72)
 Carolyn Ramo, in *honor of*
Bernard Lumpkin
 Julia Randall (A '99)
 Erika Rane (A '93), in *memory*
of David C. Driskell

Britt Rathsmann (A '04)
 Daniel Rich (A '04)
 Casey Riley
 Celeste Roberge (A '79)
 Leslie Roberts (A '86)
 Omar Rodriguez-Graham (A '13)
 Hanneline Røgeberg (A '88,
 F '09)
 Ann Marie Rousseau (A '70)
 Alysa Rowlands (A '91)
 Andrew Roy (A '87)
 Naomi Safran-Hon (A '12)
 Gabriela Salazar (A '11)
 Sara Saltzman (A '05)
 Cathy A. Sarkowsky (A '93)
 Jean Sausele-Knodt (A '83, '21)
 Pedram Sazesh (A '17)
 Claudia Sbrissa (A '03)
 Ingrid Schaffner
 Michael Scoggins (A '03)
 Roger A. Search (A '72)
 Beverly Semmes (A '82, F '01,
 '05)
 Pallavi Sen (A '17), in *memory of*
Badi Ma, Thamma, &
Jhunu Thamma
 Maureen Shapiro
 Kate Shepherd (A '90)
 Joy E. Shipman (A '72, '21)
 Douglas Shippee (A '83, '21)
 Anoushé Shojae-Chaghovrand
 (A '22)
 Barbara Karp Shuster
 Arthur Simms (A '85, F '10)
 & Lucy Fradkin, in *honor of*
Barbara Lapcek
 Teru Simon (A '78), in *memory*
of Sidney Simon &
Henry Varnum Poor
 Alan Singer (A '73)
 William A. Slichter (A '86)
 Michael Smith (F '11)
 Shinique Smith (A '03)
 Syvyla Snowden (A '64, '21), in
honor of Shell
 Ellen M. Soffer (A '81)

Anna Souvorov
 Gail Spaen (A '86)
 Yvonne Lung (A '06) &
 Dustin Sparks (A '07)
 Stacy Tenenbaum Stark, in
honor of Katie Sonnenborn
 Aaron T. Stephan (A '02)
 Barbara Sullivan
 Marc Swanson (A '00, F '14)
 Julianne Swartz (A '99, F '08)
 Fabian Tabibian (A '10)
 Michael & Isa Tcheyan, in
memory of Adrienne Tcheyan
 Nicole Titus
 Sarah Tortora (A '13)
 James E. Tracey (A '78)
 Tomoe Tsutsumi (A '10)
 Lan Tuzon (F '19)
 John W. Udvardy (A '57, '21)
 Cynthia Underwood (A '99, '21)
 Josué Morales Urbina (A '07),
 in *memory of Patrizia Moreno*
 & *Alfonso Urbina Batres*
 Peter C. VanAllen, in *memory*
of Donald & Jane Seabury
 Elmi L. Ventura Mata (A '19),
 in *honor of the Cleveland*
Institute of Art
 William Villalongo (A '02)
 Debra Vodhanel (A '79, '21)
 Maria K. Walker (A '11)
 Richard T. Walker (A '09)
 Sandy Walker (A '63, '21)
 Connie Walsh (A '96, '21)
 Lindsay Wait (A '77) &
 Colin Thomson (A '74), in
honor of the class of 1977
 & *1974*
 Van Doren Waxter
 Allison Freedman Weisberg &
 Peter Barker-Huelster, in
honor of Sarah Workneh &
Katie Sonnenborn
 Franklin White (A '66)
 Scott Patrick Wiener (A '10), in
honor of Steve Locke (A '02)



Alexander Richard Wilson (A '22) during a studio visit with **Amitha Raman**, **Eleanor Acquavella** and **Rena Hoffman** on campus.

Allison Wiese (A '99)
Brittney Leeanne Williams (A '17)
John M. Williams (A '90)

Joannah C. Wilmerding (A '59)
Letha Wilson (A '09)
Matthew C. Wilson (A '10)

Carmen Winant (A '10) &
Luke Stettner (A '10)
Bennett Wine (A '12)

Gerald Wolfe (A '74)
Ellen Xu (A '16)
Alan Yu

Torie Zalben
Furong Zhang (A '89, '21)
Drea Zlanabnitig (A '18)

ENDOWED SCHOLARSHIP

Milton & Sally Avery
Endowed Scholarship
Bingham Scholarship
Brown Endowed Scholarship
Deborah Buck Foundation

Camille Cosby Scholarship
Cummings Endowed
Scholarship
Dreyfus Endowed Scholarship
Donald and Doris Fisher
Scholarship

Gober-Moffett Scholarship
Ann and Graham Gund
Scholarship
George Gund Scholarship
Alex Katz Scholarship

Bernard Langlais Endowment
Scholarship
Jacob and Gwendolyn
Lawrence Scholarship
Reid Peter Lewis Scholarship
Toby Fund Scholarship

Don F. Turano Scholarship
Wallace-Reader's Digest
Scholarship
W & M Zorach Scholarship

THE ELMS

The Elms was established in honor of Skowhegan's 75th Anniversary to recognize artists, individuals, and families who choose to provide for Skowhegan's future by including the school in their estate plans. Skowhegan gratefully acknowledges the following members.

Emma Amos (F '86, '97, '06)
Mildred C. Brinn

Susan Paul Firestone (A '72)
Robert Flynt (A '74, '76)

Rae & Robert Gilson
Gail S. Hollenbeck (A '66)

☛ In memory

For more information about joining The Elms, contact
Cerie Bamford by email at cbamford@skowheganart.org
or visit: skowheganart.org/planned-giving.

In Memoriam

We regret the passing of these friends
from the Skowhegan community.

Donald Baechler (F '94), *Governor 1994-2019*
b. 1956; d. April 4, 2022

Sam Gilliam (F '71)
b. 1933; d. June 25, 2022

Lee Bontecou (A '55, F '88)
b. 1931; d. November 8, 2022

James C. McMillan (A '47)
b. 1925; d. September 1, 2022

Philip W. Bormarth (A '51, '52)
b. 1929; d. June 29, 2022

Wilson "Roly" Nolen, *Trustee 1989-2017,*
Treasurer 1997-2001
d. June 12, 2022

Ashley Bryan (A '46, '56)
b. 1923; d. February 4, 2022

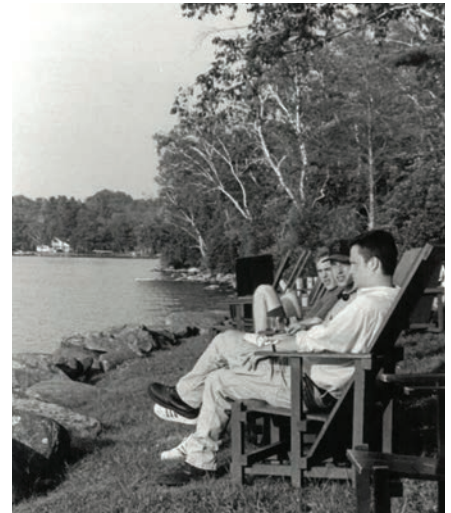
Lorinda Roland (A '59)
b. 1938; d. August 31, 2022

Ann L. Valentine Cobb (A '50, '51)
b. 1931; d. February 7, 2022

Timothy "Tim" R. Watkins (A '79)
b. 1952; d. December 30, 2022

Wade Thomas "Tee" Frame (A '51)
b. 1923; d. March 22, 2022

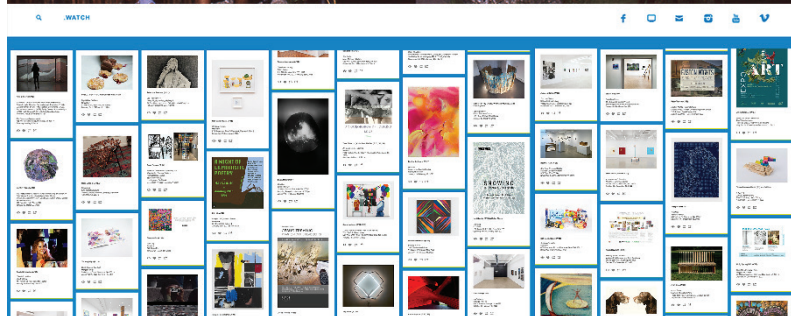
Henrietta Gersten-Liebowitz (a.k.a. Hedy
O'Beil) (A '58)
b. 1928; d. September 6, 2022



Donald Baechler (F '94) sitting by Wesserunsett Lake at Skowhegan, 1994; **Ashley Bryan** (A '46, '56) working in the South Solon Meeting House, 1956.

Alumni & Faculty News

Did you know that we post alumni & faculty events and exhibitions on Skowhegan's Tumblr and Instagram Stories every week? Visit our Tumblr or follow us on IG to view announcements by scanning the QR code below.



Skowhegan Alumni & Faculty, we'd love to hear from you!

Email upcoming exhibitions and events to announce@skowheganart.org to be included on our Tumblr, and *at least 2 weeks in advanced* to be featured on Instagram Stories.

Be sure to include an image, the event title, venue + location, and date(s).

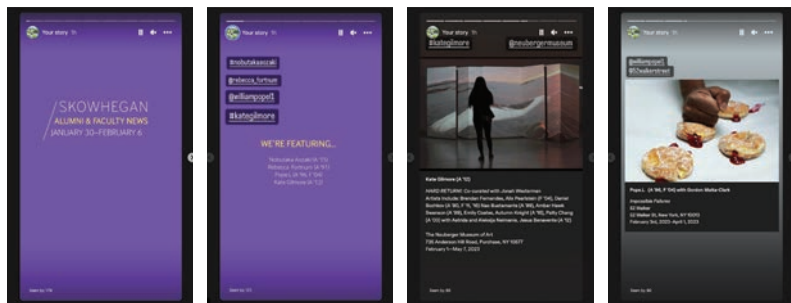
You can also add us to your email list: announce@skowheganart.org to keep us updated.



skowhegan.tumblr.com



[@skowheganart](https://www.instagram.com/skowheganart)



Boards & Staff

Lists as of January 1, 2023

BOARD OF TRUSTEES

Eleanor Acquavella, *Chair*
Paula J. Volent, *President*
Gregory K. Palm, *Treasurer*
Bernard I. Lumpkin, *Secretary*
Jan Aronson
Ron Buckley
John R. Coleman
Warren C. Cook
Sharon Corwin
Chiara Edmands
Susan Paul Firestone (A '72)
Ann L. Gund
Elizabeth R. Hilpman
Rena Hoffman
Stephanie Hunt
Robert L. Looker
Victoria Love Salnikoff
John Melick
Jennifer New
Richard T. Prins
Amitha Raman
Judson P. Reiss
Alan Wanzenberg

BOARD OF GOVERNORS

Marlene McCarty (F '11),
Co-Chair
Suzanne McClelland
(F '99, '22), *Co-Chair*
Alix Pearlstein (F '04),
Co-Chair
Janine Antoni (F '98)
Daniel Bozhkov (A '90,
F '11, '16)
Matthew Brannon (F '13)
Louis Cameron (A '96, F '16)
Francis Cape (A '89, F '08)
Marie-Antoinette Chiarenza,
RELAX (F '13)
Chitra Ganesh (A '01, F '13, '19)
Jeffrey Gibson (F '14)
Neil Goldberg (F '15)
María Elena González (F '05)
Richard Haas (F '82, '84)
Jane Hammond (F '92, '05)
Dave Hardy (A '04, F '18)
Daniel Hauser, RELAX (F '13)
Jennie C. Jones (A '96, F '14)
Martin Kersels (F '10)
Shaun Leonardo (A '04)
Marie Lorenz (A '04, F '13)
Whitfield Lovell (A '85, F '01,
'02, '05)
Fabian Marcaccio, (F '97)
Dave McKenzie (A '00,
F '11, '17)
Donald Moffett (F '04)
Carrie Moyer (A '95, F '10)

Jeanine Oleson (A '00, F '18)
Paul Pfeiffer (F '05, '10, '16)
Allen Ruppberg (F '01)
Alison Saar (F '93)
Beverly Semmes (A '82,
F '01, '05)
Lisa Sigal (A '86, F '06)
Arthur Simms (A '85, F '10)
Robert Storr (A '78, F '02)
Marc Swanson (A '00, F '14)
Julianne Swartz (A '99, F '08)
Fred Wilson (F '95)

Governor Emerita

Lois Dodd (F '79)

GOVERNORS' CIRCLE

Mel Chin (F '95)
Guy Goodwin (F '88, '93)
Byron Kim (A '86, F '99, '13)
Guillermo Kuitca (F '99, '04)
Tommy Lanigan-Schmidt
(F '91, '92, '97, '13)
Howardena Pindell (F '80)
Kiki Smith (F '93)
William Wegman (F '83, '92)

ALLIANCE

Jesus Benavente (A '12)
Keren Bebenisty (A '09)
Claudia Bitran (A '14)
Haley Bueschlen (A '15)
Alan Calpe (A '16)
Ally Caple (A '19)
Cameron Granger (A '17)
Annette Cyr (A '76, '21)
Arash Fewzee (A '18)
Rachel Frank (A '05)
Daniel Greenberg (A '18)
Gregory Kalliche (A '15)
Eleanor Kipping (A '18)
Adam Milner (A '18)
Joiri Minaya (A '13)
Bryson Rand (A '19)
Birgit Rathsmann (A '04)
José de Jesus Rodríguez (A '17)
Naomi Safran-Hon (A '12)
Gabriela Salazar (A '11)
Michael Scoggins (A '03)
Becky Sellinger (A '12)
Pallavi Sen (A '17)
Rebecca Shippee (A '18)
Fabian Tabibian (A '10)

COUNCIL

Rena Hoffman, *Co-Chair*
Amitha Raman, *Co-Chair*
Morgan Aguiar-Lucander
Desiree Almodovar
Camilo Alvarez &
Alexandra Cherubini
Rudy Austin
Arlene Bascom
Deborah Buck (A '75)
Laura Burton & Owen Duffy
Edwin Cahill
Janis Gardner Cecil
Jung & Nelson Chai
Sarah Corona
Paul Cossu
Jodi Dady
Jocelyne DeNunzio
Kathleen Dill
Karen Hesse Flatow (A '94) &
Evan Flatow
Julia Fowler
John H. Friedman
Katherine Gass Stowe
Elizabeth Goldberg
Amy Goldrich & Nick Kline
David & Samantha Goldring
Alexander Gorlin
halley k harrisburg &
Michael Rosenfeld
Caroline Hoffman
Phyllis Hollis
Tracey Hummer
Rachel & Michael Judlowe
Irene Kim & Peter Kahng
Noel D. Kirton & Michael Paley
Jessica B. Lee
Miyoung Lee
Rachel Lee
Michael & Marjorie Levine
Trella Lopez
Bernard I. Lumpkin
Neil Luthra
Regina Morales
Valerie O'Halloran
Nick Opinsky
Joseph Pullen & Ray Volant
Norm Robinson
Steve Shane
Yulia Topchiy
Margaret Wang
Jamie & Emmett Watson
Merele Williams
Cecilia Wolfson
Dian Woodner
Alan Yu

YEAR ROUND STAFF

Cerie Woodner Bamford,
*Deputy Director of
Development & Events*
Eric Bees, *Senior Development
Officer*
Ally Caple (A '19), *Research &
Archives Assistant*
Christopher Carroll (A '08),
Program Manager
Glorimar Garcia, *Development
Assistant*
William Holmes, *Facilities
Director*
Paige Laino, *Alumni & Archives
Manager*
Julie Quon, *Director of
Communications & Marketing*
Katie Sonnenborn, *Co-Director*
Anna Souvorov, *Manager,
Office & Administration*
Sarah Workneh, *Co-Director*
Reg Zehner, *Content &
Communications Assistant*

SUMMER STAFF 2022

Sarah Anderson, *Housekeeping*
Tim Brandsted, *Program
Coordinator*
Mariel Capanna (A '17)
Christopher Carroll (A '08),
Media Lab Manager
Rebecca Clough, *Assistant
Chef*
Oscar Rene Comejo (A '14),
Fresco Instructor
Sarah Corson, *Head of
Housekeeping*
Marc Dore, *Facilities &
Van Driver*
Tamara Dore, *Red Farm*
Ralph Drouin, *Facilities*
Rachel Duffy, *Kitchen*
Kevin Flanagan, *Facilities*
Meredith Gaglio, *Librarian*
William Holmes, *Facilities
Director*
Brandy Jewell, *Housekeeping*
Peter Jillson, *Facilities*
Samantha Jorgensen, *Kitchen
& Van Driver*
Addee Kim, *Kitchen*
Desmond Lewis (A '18),
Sculpture Manager
Lily McElroy (A '06), *Media Lab
Assistant*
Gina Mitchell, *Counseling Dean*
Ayianna Martin, *Kitchen*
Emily Olson, *Kitchen*
Elle Pérez (A '15), *Dean Emeritus*
Ron Pinkham, *Facilities*
Matteo Pizano-Lovera, *Kitchen*
Maria Reynolds, *Assistant Chef*
José de Jesús Rodríguez (A '17),
Fresco Instructor
Elysia Roorbach, *Kitchen*
Rosa Rosario, *Director of
Residence Life & Head Chef*
Pallavi Sen (A '17), *Dean*
Ashley Teamer (A '14), *Dean*
Buddy Thomas, *Gardener*
Shawn Thornton (A '02), *Baker*
Elizabeth Tubergen (A '15)
Erica Wessman (A '15),
Sculpture Manager
Sarah Workneh, *Director*

Established in 1946 *by* artists, *for* artists, Skowhegan School of Painting & Sculpture is one of the country's foremost educational experiences for emerging visual artists. Skowhegan's nine-week intensive summer program seeks to bring together a diverse group of individuals who have demonstrated a commitment to artmaking and inquiry, creating the most stimulating and rigorous environment possible for a concentrated period of artistic creation, interaction, and growth. Located on a historic farm in rural Maine, the campus serves as a critical component of the program. Fundamental to Skowhegan's pedagogy is an understanding that a multitude of voices, disciplines, experiences, ethnicities, identities, physicalities, and economies is critical to advancing the conversation about art. We do not consider financial ability or circumstances during our admissions process. Still governed by artists today, the program provides an atmosphere in which participants are encouraged to work in contrast to market or academic expectations.
