

Founded in 1946 by artists for artists, Skowhegan School of Painting & Sculpture is one of the country's foremost programs for emerging visual artists. The intensive nine-week summer session, held on our nearly 350-acre campus in Maine, provides a collaborative and rigorous environment for artistic creation, risk-taking, and mentorship, by creating a flexible pedagogical framework that is informed by the School's history and responsive to the individual needs of each artist. Skowhegan summers have had a lasting impact on the practices of thousands of artists, and the institution plays an integral role in ensuring the vitality of contemporary artmaking.

2015 Session

June 6 – August 8

Resident Faculty

LaToya Ruby Frazier (A '07)
 Neil Goldberg
 Odili Donald Odita
 Michelle Grabner
 Sarah Oppenheimer

Visiting Faculty

David Diao (F '70)
 Jonathan Berger
 Lizzie Fitch & Ryan Trecartin
 Regina José Galindo
 Julie Ault

Special Lecture

Theaster Gates

SKOWHEGAN / JOURNAL

2014–2015

03 Summer 2014

Why Are These Games So Bad?

Sharon Madanes (A '14)
 Susan Metrican (A '14)

Paper Negatives

Tei Blow (A '14)

Selected Documentation

Daniel Carroll (A '14)

Bernard Langlais and Skowhegan

Hannah W. Blunt

I see you, you see me. (2014)

by Felipe Steinberg (A '14)

16 Space Launch

New York Space Fund

skowheganBOX no.2

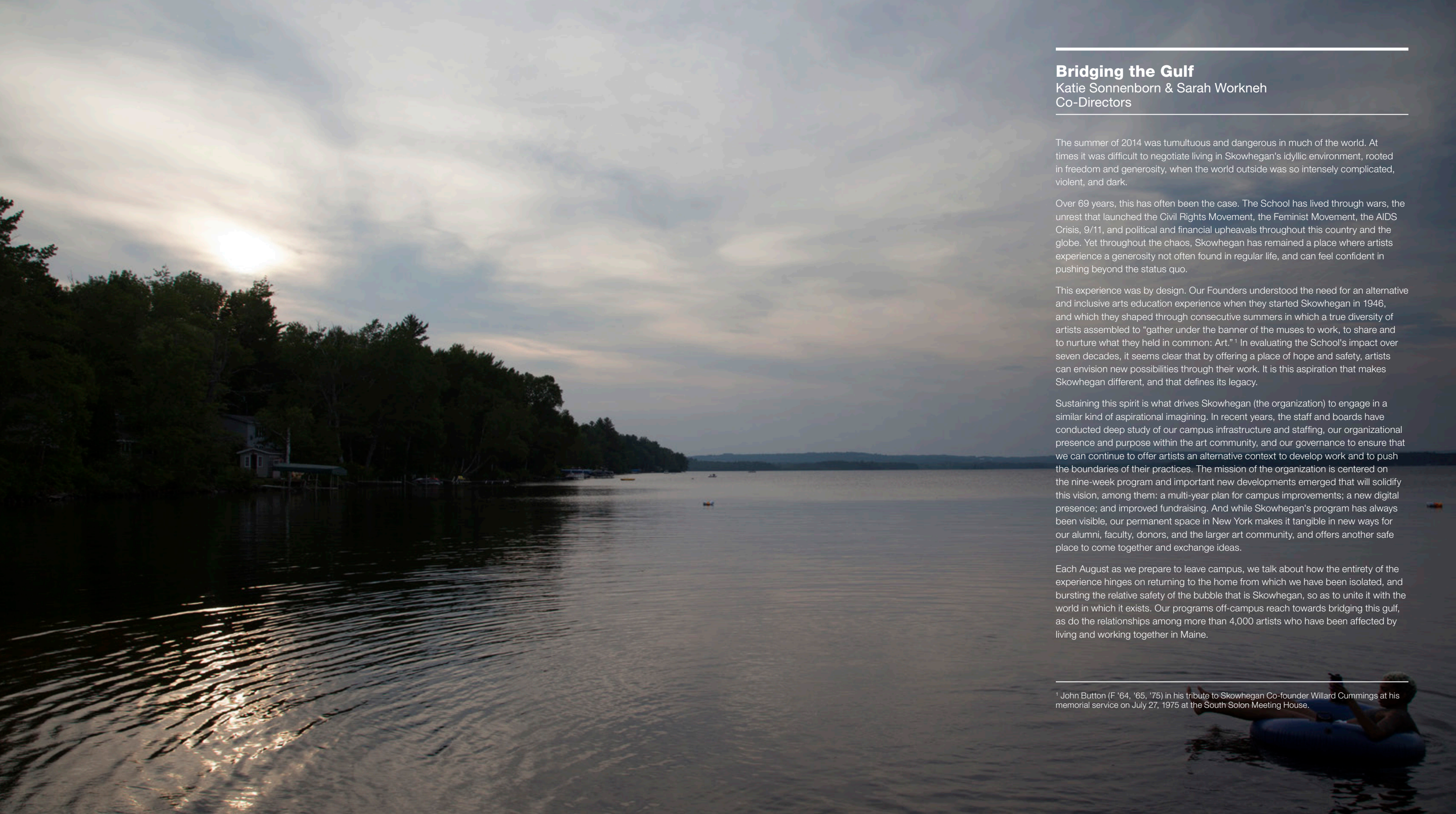
Sreshta Rit Premnath (A '09)

Inaugural Season

136 W. 22nd Street

26 Alumni Programs & News

42 Support



Bridging the Gulf

Katie Sonnenborn & Sarah Workneh
Co-Directors

The summer of 2014 was tumultuous and dangerous in much of the world. At times it was difficult to negotiate living in Skowhegan's idyllic environment, rooted in freedom and generosity, when the world outside was so intensely complicated, violent, and dark.

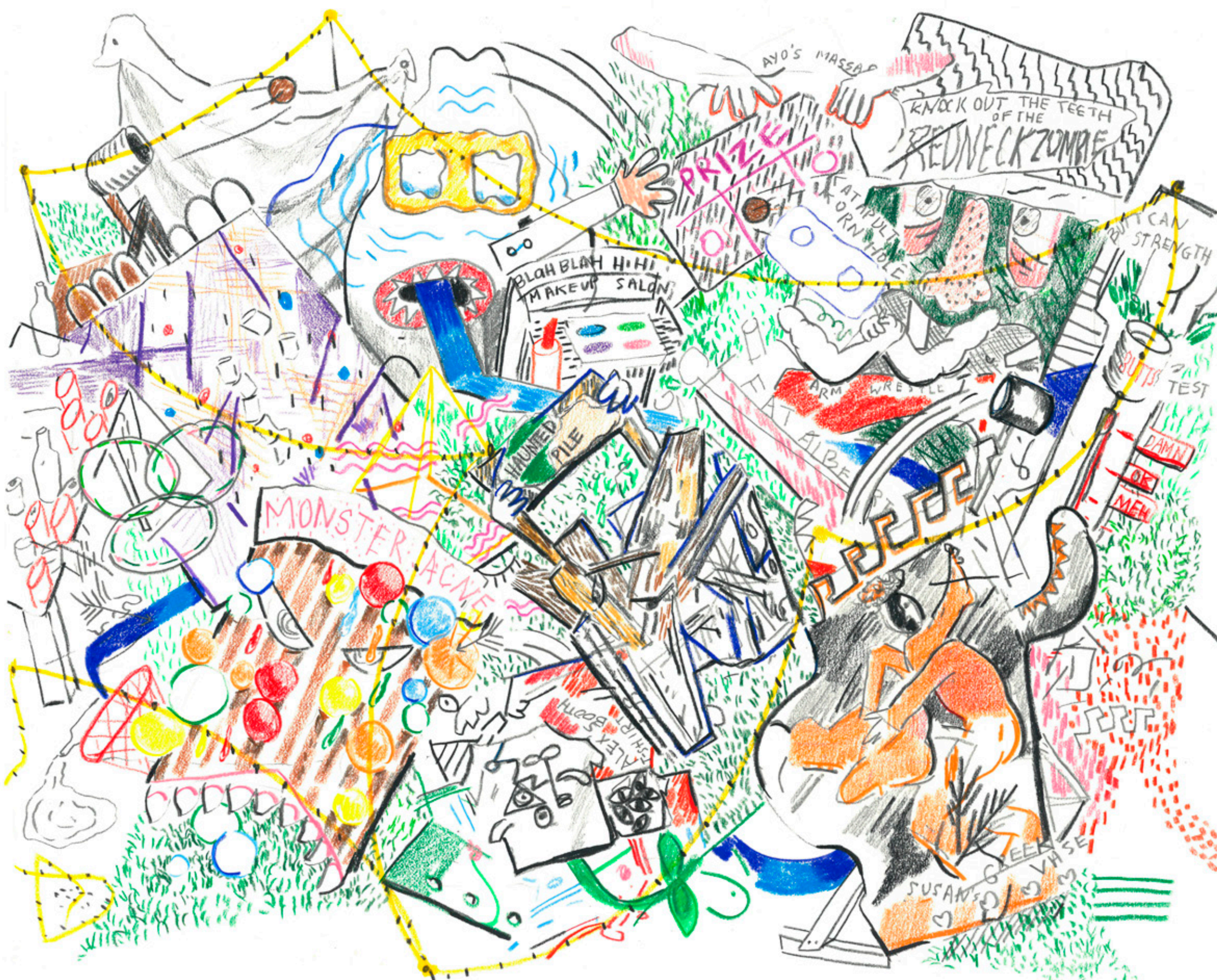
Over 69 years, this has often been the case. The School has lived through wars, the unrest that launched the Civil Rights Movement, the Feminist Movement, the AIDS Crisis, 9/11, and political and financial upheavals throughout this country and the globe. Yet throughout the chaos, Skowhegan has remained a place where artists experience a generosity not often found in regular life, and can feel confident in pushing beyond the status quo.

This experience was by design. Our Founders understood the need for an alternative and inclusive arts education experience when they started Skowhegan in 1946, and which they shaped through consecutive summers in which a true diversity of artists assembled to "gather under the banner of the muses to work, to share and to nurture what they held in common: Art."¹ In evaluating the School's impact over seven decades, it seems clear that by offering a place of hope and safety, artists can envision new possibilities through their work. It is this aspiration that makes Skowhegan different, and that defines its legacy.

Sustaining this spirit is what drives Skowhegan (the organization) to engage in a similar kind of aspirational imagining. In recent years, the staff and boards have conducted deep study of our campus infrastructure and staffing, our organizational presence and purpose within the art community, and our governance to ensure that we can continue to offer artists an alternative context to develop work and to push the boundaries of their practices. The mission of the organization is centered on the nine-week program and important new developments emerged that will solidify this vision, among them: a multi-year plan for campus improvements; a new digital presence; and improved fundraising. And while Skowhegan's program has always been visible, our permanent space in New York makes it tangible in new ways for our alumni, faculty, donors, and the larger art community, and offers another safe place to come together and exchange ideas.

Each August as we prepare to leave campus, we talk about how the entirety of the experience hinges on returning to the home from which we have been isolated, and bursting the relative safety of the bubble that is Skowhegan, so as to unite it with the world in which it exists. Our programs off-campus reach towards bridging this gulf, as do the relationships among more than 4,000 artists who have been affected by living and working together in Maine.

¹ John Button (F '64, '65, '75) in his tribute to Skowhegan Co-founder Willard Cummings at his memorial service on July 27, 1975 at the South Solon Meeting House.



Why Are These Games So Bad?

Illustration by Sharon Madanes (A '14)

Text by Susan Metrican (A '14)

There are certain events each summer that act as almost a stand-in for the entire experience of the group of 65 distinct individuals who find themselves at Skowhegan. Sometimes these events happen early and set the tone for group interaction—sometimes they happen once the group can no longer imagine anyone else and collective brainstorming takes hold. In 2014, both happened—the nexus of practice and making, collaboration, spontaneity, and joyful celebration manifested itself into a carnival called *HappyLand*.

The Stuff they picked up at the dump would be the perfect material for what they had in mind, but The Stuff had another plan. “The dump is actually a really great place to find materials for projects—and it’s a good way to be spontaneous!” – participant
Haunted Pile, Kyle Downs

They had 24 hours, and worked straight through lunch. “I was super hungry, we all were, but we had to keep working. This thing was supposed to pop off in about 8 hours.” – participant

A backwoods bloodbath that will tickle your heart, then rip it out. “We spent countless hours talking in those rocking chairs on the porch. It was good to be able to turn off your cellphone and insta-chat and get to know someone the old fashioned way.” – participant

Knock Out the Teeth of the Redneck Zombie, Willie Stewart

HappyLand Games:

Heavy Plinko, Andrew Hamill & Magdalen Wong

Ayo’s Massage, Ayo Shih

Billy Putt-Putt, Kyle Downs & Alex Goss

B-Movie Screening, Kyle Downs & Willie Stewart

Greek Vase Head-in-Hole, Susan Metrican

T-shirt Painting, Alex Cohen

Bla Bla...hihi hi, this Chatterbox has something she wants to tell you. “We came up with the idea of the face-painting booth mainly so we could touch each other’s faces. It was nice to catch up and see how people were coming along with their work and missing home and stuff.” – participant

Bla Bla...hihi hi, Make-Up Salon, Sharon Madanes & Irini Miga

Where the hell is everybody? The Lone Sweeper is the only one left to clean up the mess. “I just found it pretty annoying that everyone was willing to get in there and make a huge mess and enjoy themselves, but when it was time to clean up, they’re all still asleep.” – participant

Arm Wrestling, Everybody

Prince Albert, Kolbeinn Hugli

Tuzan the Fortune Teller, Kyle Downs,

Susan Metrican & Kuldeep Singh

Monster Acne, Nick Doyle, Kyle Downs

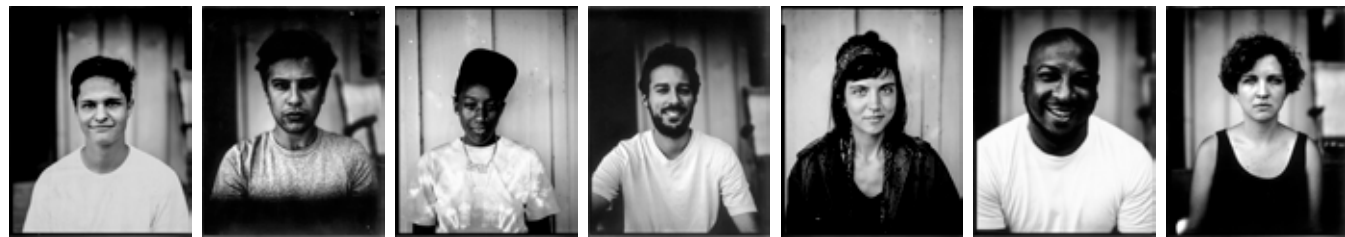
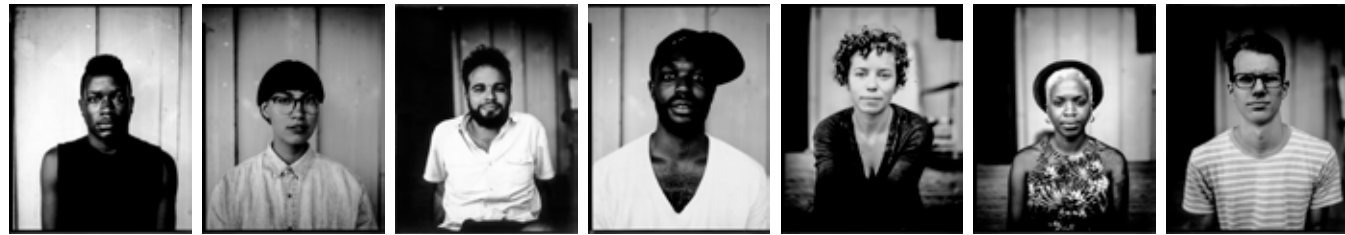
& Willie Stewart

Katapult Kornhole, Chris Papa

Basketball, Aaron Fowler

DJ, Austin White

HappyLand is an artist-made traveling circus that contains unusual games, prizes, b-movie screenings, and multiple performances involving the artists as clowns, side-show performers, and HappyLand employees. The environment and props are built by the artists twenty-four hours ahead of the performance from local, discarded materials, and found objects, transforming everyday detritus into a collaborative environment that fosters creative problem solving on a community and personal level.
– Kyle Downs & Willie Stewart



Paper Negatives by Tei Blow (A '14)

2014 Participants

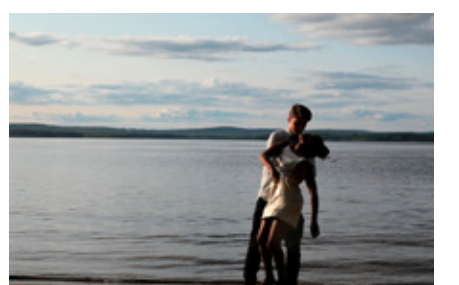
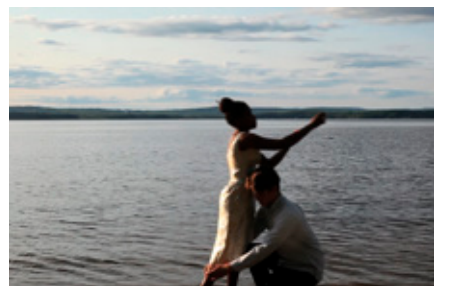
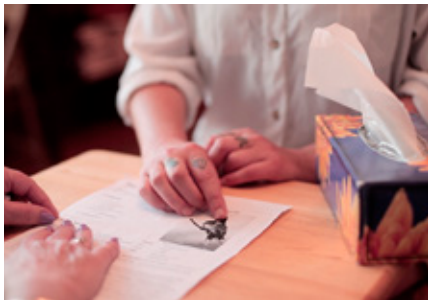
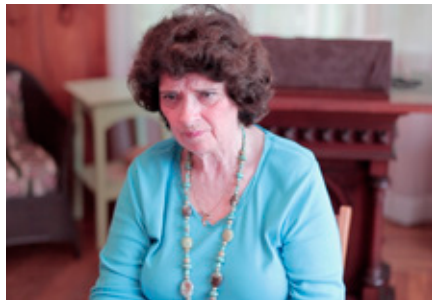
- | | | | | |
|--|--------------------|------------------------------|--|-----------------|
| Kenya (Robinson) | Gabino Castelan | Alex Goss | Sharon Madanes | Holly Pitre |
| Noor Abed | Xinyi Cheng | Andrew Green | J. Louise Makary | Yoshie Sakai |
| Alejandro Acierto | Allana Clarke | Nicolás Gullotta | Jonathan Manno | Ayo Shih |
| Catalina Africa | Alex Cohen | Lauren Halsey | Jonathan Marshalik | David Shrobe |
| Cortney Andrews | Oscar Cornejo | Andrew Hamill | Sean McElroy (Royal Osiris Karaoke Ensemble) | Kuldeep Singh |
| Mario Ayala | Kyle Downs | Elizabeth Harney | Holli McEntegart | Corinne Spencer |
| Nicolás Bacal | Nick Doyle | Robert Hodge | Susan Metrican | Rachel Stern |
| Seline Baumgartner | Christopher Earley | Audrey Hope | Irini Miga | William Stewart |
| Anthea Behm | John Edmonds | Kolbeinn Hugli | Madsen Minax | Ashley Teamer |
| Claudia Bitran | Jamie Felton | Singithi Kandage (not shown) | Sophia Narrett | Austin White |
| Tei Blow (Royal Osiris Karaoke Ensemble) | Felipe Steinberg | Baseera Khan | Chris Papa | Magdalen Wong |
| Matt Brett | Anna Garner | Kylie Lockwood | Joseph Parra | Julie Yeo |
| Daniel Carroll | Doreen Garner | Eric Nathaniel Mack | Oren Pinhassi | |

2014 Resident Faculty

- Jeffrey Gibson
- Jennie C. Jones (A '96)
- Yoshua Okón
- Marc Swanson (A '00)
- Sigrid Sandtröm (A '00)

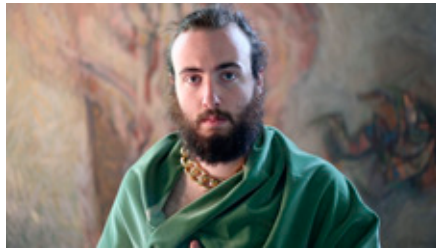
2014 Visiting Faculty (not shown)

- Luis Camnitzer
- Abraham Cruzvillegas
- Sheila Hicks
- Roni Horn
- Betye Saar (F '85)
- Simon Critchley (Paul Mellon Distinguished Fellow)





05



06





07



08



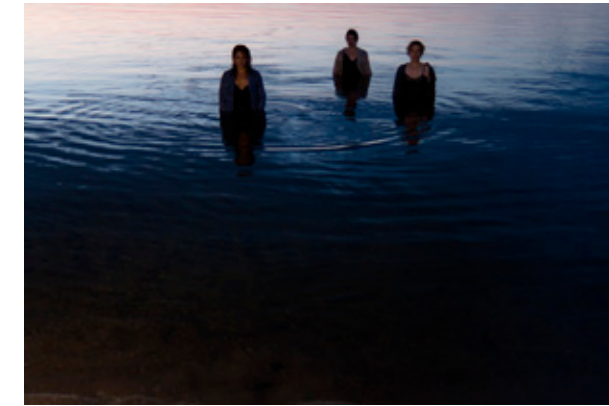
09



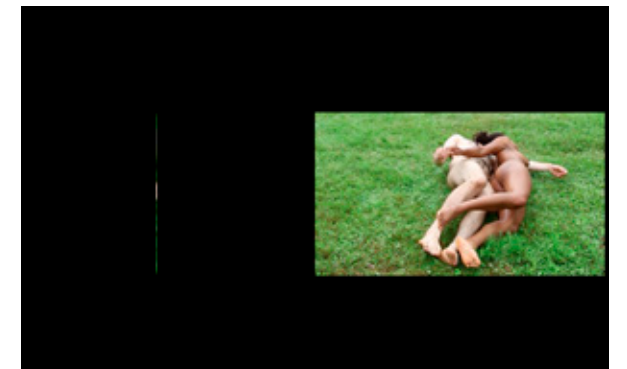
Selected Documentation by Daniel Carroll (A '14)

It is impossible to convey the energy of any given summer to those who cannot be there to experience it—that is also part of its beauty. Each year, we use the Journal to recount some of the stories and projects that occurred over the summer but talking about the remarkable diversity of work and the personal engagement of the participants, faculty and staff, is almost like telling ghost stories—legends, lore. In 2014, however, through his almost relentless support of his fellow participants, Danny Carroll leaves us with documents that simultaneously demonstrate the breadth of work and the generosity that seemed to overwhelm the spirit of the summer. Thank you, Danny, and thank you, class of 2014.

— Sarah Workneh, Co-Director

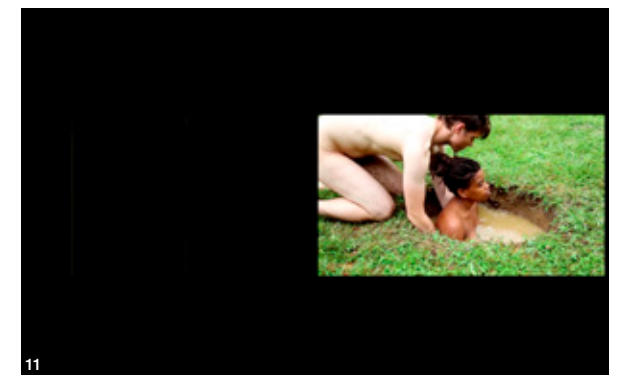


10



Documented works by:

- 01 Nicolás Gullotta
- 02 Holli McEntegart
- 03 J. Louise Makary
- 04 Cori Spencer
- 05 Rachel Stern
- 06 Claudia Bitran
- 07 Anna Garner
- 08 Anthea Behm
- 09 Danny Carroll
- 10 Cortney Andrews
- 11 Allana Clarke



11



Bernard Langlais and Skowhegan

Hannah W. Blunt

Langlais Curator for Special Projects, Colby College

In 1940, Bernard Langlais left his home state of Maine, set on pursuing a career in commercial art. His childhood studio—a loft space over his grandparents' barn—was filled with his early artistic exploits: comic strips, painted banners for local sports games, and cartoon drawings. Eager for training and artistic exposure, Langlais said he was “just biding my time, waiting to finish high school so that I could go somewhere else.” In 1949, after a stint in the Naval Air Command and several years studying at the Corcoran School of Art in Washington, D.C., he received a scholarship to the Skowhegan School of Painting & Sculpture. On the then 160-acre farm, with its converted-barn studios, rolling fields, and open-air “classrooms,” Langlais was enlightened by paradox: he was surrounded by a diverse group of experimental artists, in a rural setting just 60 miles down the Maine back roads from his childhood home in Old Town. “The first summer at Skowhegan changed the direction of my life,” he wrote in 1973. He abandoned commercial design for fine art, and began making vibrant, expressionistic painted landscapes.

Langlais returned to Skowhegan as a participant for three summers in a row (1949-51). He forged close friendships with Alex Katz and Charles Duback, artists who became his studio mates in New York City. Skowhegan School co-founder Willard “Bill” Cummings—once described as a man who was “just farming artists instead of chickens”—became a friend and mentor. Langlais rented a cottage from Cummings on Wesserunset Lake after the School's session. It was even in Skowhegan, at Lakewood Theater, across the Lake from campus, that Langlais first spotted Helen Friend, an aspiring singer and the daughter of a Maine state senator who was working at the ticket booth—they married in 1955.

The deeper, more lasting effect of the School, however, was Langlais's fixation on the environment of his art: how and where he worked; the materials and techniques he used; and the conditions in which he completed and displayed his pieces. Outdoor space, old barns, reclaimed wood, and fresh Maine air became integral to Langlais's art. By the late 1950s, Langlais abandoned painting for the medium of wood—a material he found more intuitive. Langlais remained close to Bill Cummings even after he purchased his own summer cottage in Cushing. When Langlais debated moving back to Maine full-time in the mid-1960s, he confided in a letter to Cummings: “I think I've had it with NY.”

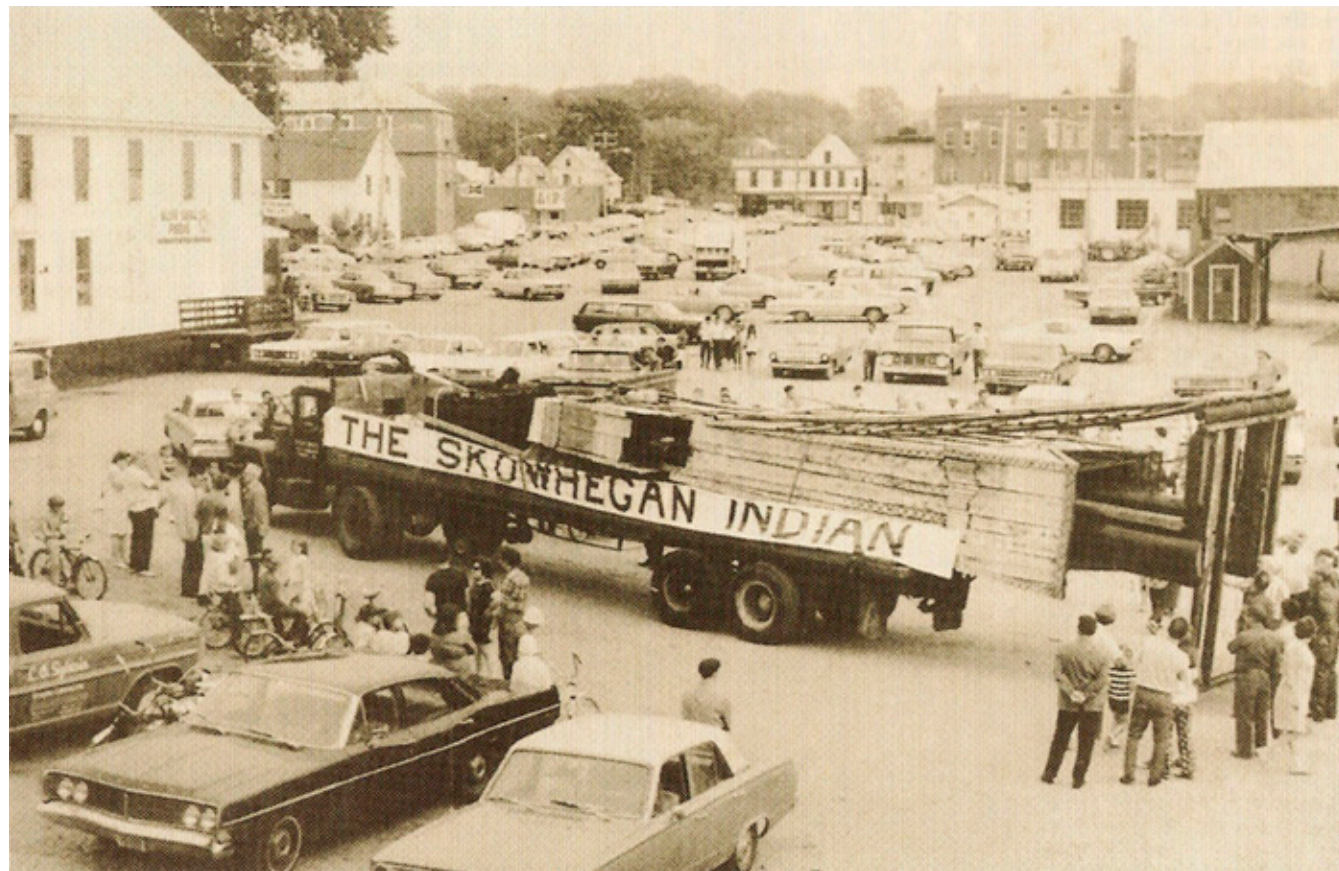
It was Cummings who recommended Langlais to the Skowhegan Tourist Hospitality Association in 1967 for their planned monument to Maine's Native Americans. Cummings applauded their decision “to have a fine work of art rather than a commercial statue with no local or artistic identity.” Nonetheless, and not surprisingly, Langlais challenged the Association's concept for the commission. The original plans outlined a thirty-foot statue representing an Indian, which one advisor to the project described as, “a compromise between

expected-tourist-stereotype and whatever historical-accuracy-we-can-uncover." Langlais used the full 70-foot timbers that were donated for the project and, after taking it upon himself to research the local native peoples, represented an Abenaki man with fishing weir and spear, rather than the figure with headdress, loin cloth and tomahawk that had been proposed. He worked on the project for two years, building scaffolding for the statue in the front yard of his home in Cushing in order to work on the sculpture at its full height.

In June of 1969, the monumental piece was transported to Skowhegan on a flatbed truck with a similarly gigantic banner that identified the cargo as THE SKOWHEGAN INDIAN. The legislative body recessed as the Indian passed the State Capital in Augusta. In the weeks leading up to the dedication ceremony, a rumor began to spread that President Richard Nixon might be in attendance at the dedication event. Much better than an appearance by Nixon, though,

were Langlais's succinct, humble remarks at the ceremony: "I've lived with this fellow for two years. There will be an empty space in my yard. He's become a good friend. I hope you accept him as that."

By the time of the Indian's dedication, Langlais had populated his backyard with half a dozen large-scale wood sculptures, mostly representing animals, from the jungle to the plains to the realms of make believe, but also athletes and politicians. That number multiplied in the 1970s as his land became his primary canvas. He covered the exteriors of his barns with wood reliefs, and moved and reworked three-dimensional pieces in an ever-changing outdoor installation. Langlais acquired live sheep, geese, a donkey, a ram, and a horse to graze among the sculptures. By his death in 1977, he had created a farm of his own in Cushing, a rolling field with old barns, muddy ponds, and river views, where art was the bumper crop.



Images courtesy of Hannah W. Blunt & Colby College



***I see you, you see me.* by Felipe Steinberg (A '14)**

Felipe Steinberg is a Brazilian artist whose film and video works relate largely to an examination of global political structures explored through the micro relationships expressed in daily life and culture. While at Skowhegan, Felipe developed work in response to a local public sculpture, Bernard Langlais's Indian, which was undergoing renovation. Interested in both the town's investment in preserving the sculpture and its complicated history with the Native American population, Felipe inverts the colonial eye by using film and photo to convey the Indian's gaze upon the town's inhabitants.

From The Board

Dear Friends,

After 68 years, Skowhegan continues to be a leading opportunity for emerging visual artists and the nine-week summer session remains our core purpose. To complement this mission, Skowhegan has established several new initiatives to create active hubs uniting alumni and faculty of different generations, as well as making Skowhegan more accessible and visible to the contemporary art world at large. These include the new website, the alumni Tumblr, and the New York home with its flexible program space and archives.

Board membership is central to Skowhegan's success, and we are pleased to introduce new members: John Coleman, CEO of the VIA Agency, a leading independent advertising agency based in Portland, Maine, and Mihail Lari, a Los Angeles-based collector and entrepreneur, joined the Trustees; artists Jennie C. Jones (A '96, F '14) and Martin Kersels (F '10) joined the Governors. Their experience, interest, and leadership will help further our mission and keep Skowhegan on course. We acknowledge three Trustee retirees: George Ahl (13 years) championed emerging artists and led spirited efforts to broaden Skowhegan's reach and visibility; Lisa Richards (16 years) established an endowed Travel Fund to help international artists access Skowhegan; and Robert Shapiro (24 years) played a critical role in stabilizing Skowhegan's finances and building its endowment. We salute their service and thank them for so many contributions.

For both boards, an abiding priority is improving our physical plant. A campus assessment revealed deferred maintenance and necessary renovations that are now underway, as are plans to study future building needs and prospective sites. Working in concert with local builders and historic preservationists, the Buildings & Grounds Committee and staff have developed a feasible plan to restore buildings while maintaining the specificity of Skowhegan's site, and the aesthetic vision of Bill Cummings. The acquisition and renovation of 136 West 22nd Street was a major undertaking. Beautifully designed by Trustee Alan Wanzenberg with financial and legal input from Trustee Rick Prins, the project came together thanks to the contributions of many, notably Ann and Graham Gund and Nancy Negley (A '73). It has been fantastic to see the program space activated by alumni, as detailed in the pages of this journal.

Skowhegan's ever-changing artist community is enabled through a dedicated and consistent staff, and we gratefully acknowledge the service of librarian Judy Stoodley who retired after 14 years. Judy embraced Skowhegan's unique composition, writing in 2009: *If I could identify trends in interests I would, but I hope that never comes to pass, as the most exciting and challenging thing about working [here] is the almost guaranteed unpredictability that each new class of unique and decidedly un-trendy artists presents.* Her commitment to a flexible, responsive structure was matched by Mary Looker and Trustee Rob Looker's sense of purpose and decade-long support for the library. Last year they formalized this connection through a major endowment gift that will sustain acquisitions and provide seed funds for the collection of artists' books in New York, a visionary gift that goes to the heart of what Skowhegan does.

We hope you enjoy learning about the class of 2014 and our inaugural season at the New York space, and that you will join us at a program, event, or campus lecture soon.

Ann Gund

Chair, Board of Trustees

Greg Palm

President, Board of Trustees

Maria Elena González

Chair, Board of Governors

Anoka Faruqee

Vice Chair, Board of Governors

New York Space Fund

In 2014 Skowhegan opened its first permanent home in New York for the office, publicly accessible archives, and a flexible program space. We gratefully acknowledge the following individuals and foundations whose generosity helped make this project possible.

Major Gifts

Graham and Ann L. Gund
Nancy Negley (A '73), The
Brown Foundation
Alan Wanzenberg

Support

Diane L. Ackerman
Alex Blavatnik
Gayle E. Brown
Amy Cappellazzo and
Joanne Rosen
John R. Coleman,
The VIA Agency
Julian and Lucy Colville
Brammie and Warren C. Cook
Eleanor Acquavella Dejoux

Daniel J. Desmond
Chiara and Ben Edmands
William Ettelson
Constance Evans
Litsa Floris
John H. Friedman
Christopher Gaillard
Peter Gethers
Amy and John Griffin
Anne and RJ Grissinger
Agnes Gund
Charlotte Hall
Kate Haw
Marie Therese Heiden
Steve Henry and Philip
Shneidman

Michael Huseby
Mary Ellen Keating
Mihail Lari and Scott Murray
Nicholas Lawrence (A '83)
Allen W. Lindstrom
Robert L. Looker
Donald Moffett (F '04) and
Robert Gober (F '94)
Tiffany E. Moller
Margaret Morton
Amanda and James
Opinsky (A '77)

Greg and Susie Palm, The
Palm Foundation
Sheila Pepe (A '94, F '13)
Langhorne Perrow
Paul Pfeiffer (F '05, '10)
Arthur Pober
Mr. and Mrs. Duncan
M. Pollock
Lindsay Pollock and
Andrew S. Zarnett
Mr. and Mrs. Judson P. Reis
Louise and Leonard Riggio
Meredith and Conley Rollins
Alison Rosenbaum
Beverly Semmes
(A '82, F '01, '05)

Nataliya Slinko (A '10)
Elizabeth Smith
Katie and Jonah Sonnenborn
Marc Swanson (A '00, F '14)
Julianne Swartz (A '99, F '08)
Jackson Taylor
Hanna and Matthew
Usdan Foundation
Julia B. Weld
Cecilia Wolfson
Sarah Workneh
Don Zacharia
Lawrence S. Zilavy

Reading Room Support

The Looker Family Trust,
"Looker South"

Special Thanks

Alan Wanzenberg
Seky Gomez
Elizabeth Peeples
AWAPC
John Melick
Blue Medium
Rick Prins
Bruce McQuirk
Skadden, Arps, Slate,
Meagher & Flom LLP



skowheganBOX no.2

Sreshta Rit Premnath (A '09)



Brian Bress (A '07), *Organizing the Physical Evidence* (2014), Diptych, archival inkjet print (edition of 25), 14 x 11 inches, each Photo Brian Bress

skowheganBOX no.2 – the second edition of Skowhegan's limited edition print box set – contains work by Lucas Blalock, Brian Bress, John Houck, and Letha Wilson. This group of young American photographers has become identified with a larger movement that self reflexively considers the problems of photographic representation.

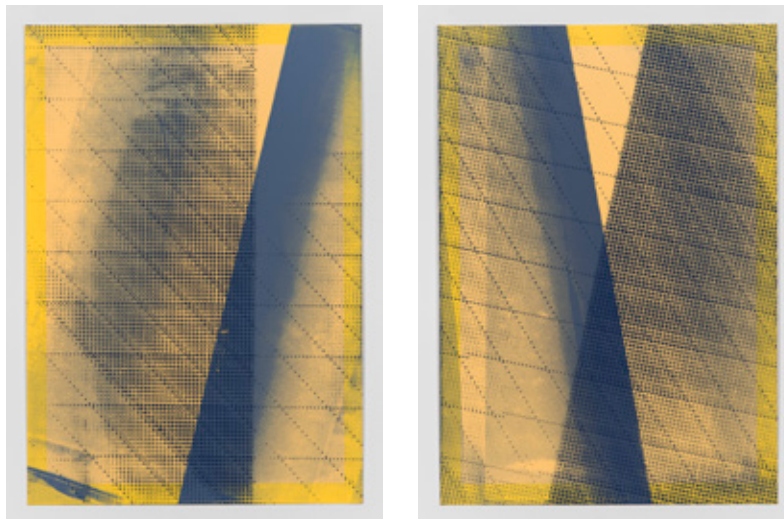
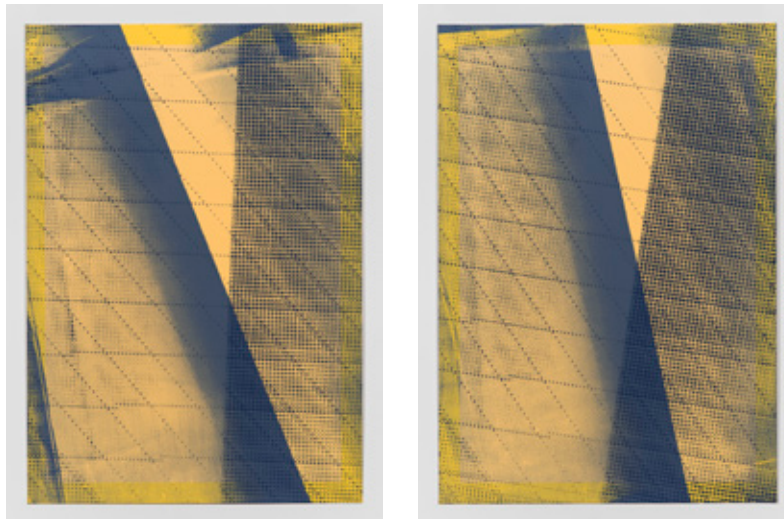
The impulse to expose a photograph's objecthood is a riposte to the fundamental nature of photography as described by the philosopher Vilém Flusser. He claims that photographs: "are difficult to decode, for a strange reason. To all appearances, they do not have to be decoded since their significance is automatically reflected on their surface."¹ The aphoristic rephrasing of this conundrum is found in the title of John Houck's 2012 exhibition at Kansas Gallery in New York: "To understand photography, you must first understand photograph."

Houck's contribution to BOX no.2 is a parametric edition of silkscreen prints that are an extension of his *Aggregates* series. Previous iterations of this project involve a grid pattern produced by a custom algorithm, which is printed, folded, photographed and reprinted several times. The resulting artworks confound the perceptual expectations that separate the photographic image from its material substrate. In this iteration, Houck uses the variable shadows produced by shifting the orientation of several layers of a silkscreen aggregate, resulting in images that are at once equivalent but unique.

¹ "Vilém Flusser; *Towards a Philosophy of Photography*," pg. 14; Reaktion Books, 2013



Letha Wilson (A '09), *Headlands Golden Cement Fold* (2014), C-print, mounted on museum board (edition of 25, hand-folded), 16 x 12 x 5/8 inches



This oscillation of the photograph between representation and thingness continues in Brian Bress's double portraits. Each box contains two comically monstrous doppelgangers, whose elaborately handmade faces could be endlessly reconstituted. The diptych functions like two frames from a video, each departing from the other while leaving an absent, unaccounted temporal lag in between the frames. Furthermore, the artifice of the mask as a stand-in for the people it hides belies a further obstruction in the surface of photographic representation.

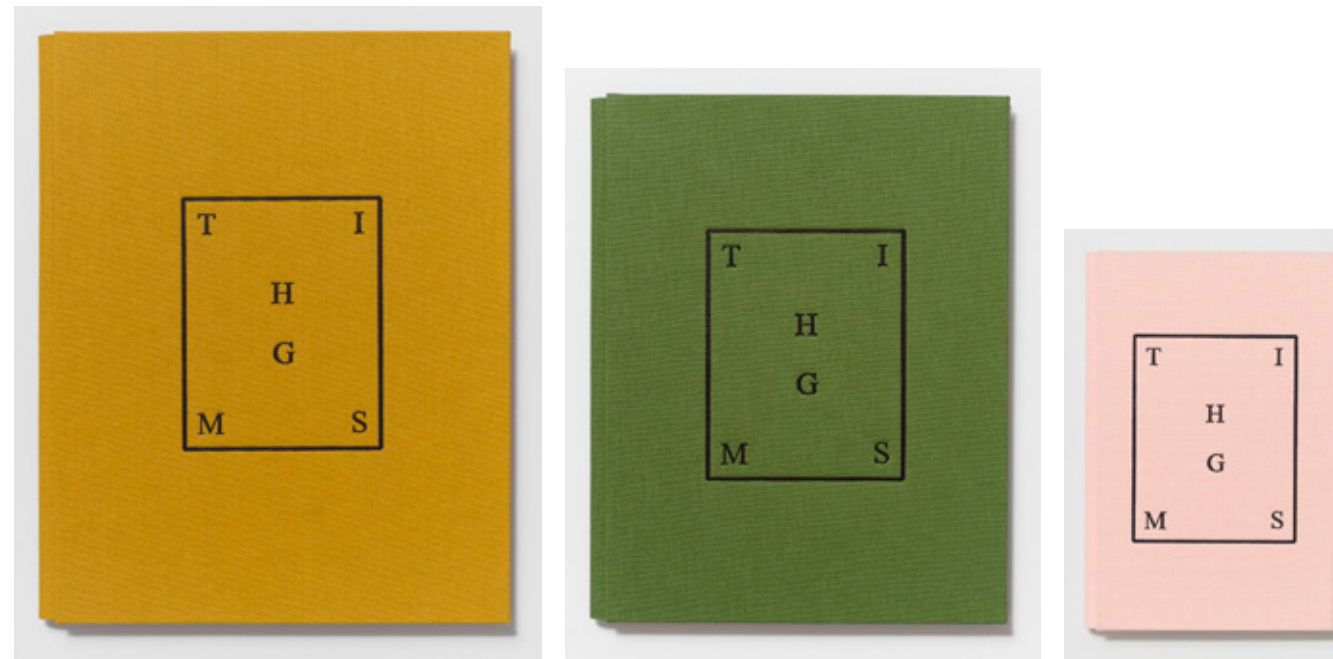
The photographs of Lucas Blalock stage this rupturing of the photographic surface through procedures of digital post-production gone awry. The use of the Photoshop stamp tool, for instance, leads to the creation of a photographic reality that no longer bears an indexical relation to the world as we know it. Blalock has produced an ambitious set of hand-bound books containing a single centerfold, unique to each BOX in the edition, and collectively titled "THINGS". An appropriate name in which the misplaced "M" may stand for the parochial spoke in the wheel that derails each photograph.

The reconstitution of photographs into sculpture is most evident in Letha Wilson's practice. Concrete matrices, architectural disruptions, cuts and folds interrupt the photographs of sublime American landscape. The material inlay aspires not only to reveal the limits of the photograph, but also to supply the viewer with fragments of the tactile world that the photograph itself elides. For her contribution to BOX no.2, Wilson has dipped a photograph of a California sunset into concrete, re-photographed the resulting hybrid and folded the final photo-print into an accordion. The artwork that results from this operation elicits a viewer's apprehension of a sunset, and the simultaneous acknowledgement of looking at *looking at a photograph of a sunset* – a recursive gesture that brings us back to the aporia inherent in this group of conceptual photographic practitioners.

skowheganBOX no.2 launched at the New York space on November 18, 2014. It has since been acquired by the Portland Museum of Art and the Whitney Museum of American Art.

Sreshtha Rit Premnath is the founder and co-editor of the publication *Shifter*. Premnath completed his MFA at Bard College, and attended the Whitney Independent Study Program in 2008.

John Houck (A '08), *Variable Shadow #1* (2014), acrylic silkscreen on archival pigment print on 100% cotton rag, unique (series of 25 parametric prints) 17 x 12 inches AP1-AP4/4 pictured



Lucas Blalock (A '11), *THINGS* (2014), Unique hardcover artist books in three sizes: 9 5/16 x 7 7/16 x 7/16 inches; 8 7/16 x 6 10/16 x 7/16 inches; 7 5/16 x 4 13/16 x 7/16 inches

Left: *Sweater (watermelon print) (upside down) / Sweater, 6/25*

Photos courtesy of Nat Ward, except where noted

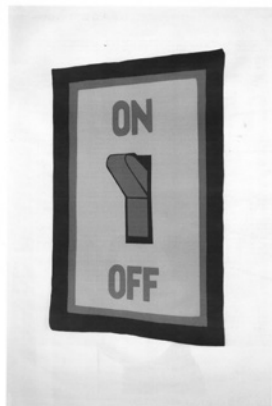
Inaugural Season at 136 W. 22nd Street

Skowhegan's off-campus programs are collaborative in nature and experimental in character. They delve deeply into topics that inform contemporary artmaking and build community between alumni and faculty of all years—as well as a broader group of artists, curators, writers, collectors, and enthusiasts.

SPACE/LAUNCH

DECEMBER 13, 2014
ALUMNI PUBLICATION & INAUGURAL ALUMNI EVENT

SPACE/LAUNCH, a publication featuring the works of 39 alumni, was edited by artists Ester Partegás (F '09), Sreshta Rit Premnath (A '09), Birgit Rathsmann (A '04), Adam Shecter (A '06), and Roger White (A '05) and printed on the occasion of the New York space alumni opening event.



THE CONTRIBUTORS (in order of appearance)

- Anthony Lepore A '04, *Nocturnal Emissions*, archival pigment print, 40 x 32 inches, 2013 (front cover).
- Nicolas Sacal A '14, *The gravity of my orbit around you*, digital photo inkjet print, 37 3/4 x 56 1/3 inches, 2009.
- Don Edler A '12, *It is still there today*, inkjet print on newsprint, 17 x 11 2/3 inches, 2014.
- James Benjamin Franklin A '94, *Harmony and Discord*, acrylic and resin on MDF, 16 x 16 inches, 2007.
- Clare Torina A '12, *Untitled*, inkjet print on newsprint, 17 x 11 2/3 inches, 2014.
- Zerek Kempf A '06, *I tried to give him CPR*, digital print, 34 x 27 3/4 inches, 2014.
- Rodrigo Valenzuela A '13, *Hedonic reversal #2*, photography, 55 x 44 inches, 2014.
- Helli McEntegart A '14, *Tenemos*, ink on paper, 2014.
- Gwenessa Lam A '04, *Falling Tower*, graphite on paper, 37 3/4 x 27 1/2 inches, 2013.
- Martin Landau A '94, *The Sinker*, oil on canvas, 108 x 48 inches, 1987.
- Mary Walling Blackburn A '11, *[Hecate's Necklace]*, Numismatics, enamel on penny, 2014.
- Ceaphas Stubbs A '12, *...This Should Feel Right...*, archival inkjet print, 44 x 60, 2013.
- Seline Baumgartner A '14, *One and Others*, video still from "One and Others", dimensions variable, 2011.
- Lavar Munroe A '13, *Shit for Brains*, pencil, marker, gouache, band-aids, embossed seal, liquid paper, spray paint, stickers, ribbon, and vellum on paper, 22 1/2 x 30 inches, 2014.
- Rachel Stern A '14, *Jeffrey in Fabergé*, C-print, 25 x 20 inches, 2014.
- Claudia Strissa A '03, *Texas*, woven security envelopes, 13 x 13 inches, 2014.
- Willard Boepple A '63, *monoprint 31.5.13 I*, silkscreen on Somerset, 18 1/4 x 26 3/4 inches, 2013.
- Katherine Bradford A '09, *Rocket Riders*, oil and acrylic on canvas, 30 x 36 inches, 2014.
- Shadi Harouni A '13, *Erasure Phase I: Paved Over* (document of toilets in AbdoLabad, Tehran), C-print, 1/2 of a diptych, 28 1/2 x 19 inches, 2014.
- John Houck A '08, *Untitled #76*, creased archival pigment print, 12 x 17 inches, 2014.
- Claire Zitzow A '11, *Idyllic no.5 (Little Boy and Fat Man)*, digital print, paper weave, 13 x 19 inches, 2014.
- Rudy Shepherd A '00, *The Healer at the induction Ceremony of the Black Rock Negative Energy Absorber in First Street Green Park, NYC*, Performed May 27, 2014. Documented by Eternea Frossard.
- Ronny Quawedo A '13, *study for portrait #1*, shoe polish and enamel on paper, 50 x 38 inches, 2012.
- Jason Head A '07, *No Vacancy*, pencil on paper, 15 x 21 inches, 2014.
- Marc Swanson A '00, *Untitled (Flowers)*, digital photo C-print, 17 x 11 2/3 inches, 2014.
- Daniel Giles A '13, *Scrap #1* (from series *Study for Plan B*), ink and spray paint on tracing paper, 11 x 16 inches, 2014.
- Hiroyuki Hamada A '98, *B17-22*, digitally altered drawing, 11 2/3 x 17 inches, 2014.
- Sue Collier A '79, *Public Restroom*, color pencil on paper, 50 x 80 inches, 2011.
- Lauren Adams A '09, *Decorum #19 (Umbrella decorated with the Dutch Ridderzaal contemporary throne pattern, with Tourmal blue and gold plate sherds from The Hague, Netherlands, late 1700s CE / Woodstock print)*, Dutch man taking a walk with his Javanese slave, 1780s CE, Nagasaki- Japan, The British Museum, London), gouache and acrylic on paper, 22 1/2 x 19 inches, 2014.
- Mike Schuwerk A '10, *Soft Launch Anthropocene*, inkjet print, dimensions variable, 2014.
- Zizi Raymond A '86, *Force Study 2*, 2014.
- Sharon Eliaassir A '11, *Day Dreamer*, oil and acrylic on canvas, 24 x 18 inches, 2014.
- Gordon Chandler A '74, *Sign*, photo, 8 1/4 x 11 inches, 2014.
- Trevor Amery A '13, *Helmet*, digital print, 20 x 20 inches, 2013.
- Caillín Berrigan A '08, *DL* (from the series, *Secondary Sex Characteristics*), ink on cotton vellum, 16 1/2 x 23 2/5 inches, 2012.
- Amy Pryor A '00, *Sky Pit*, collage with archival inkjet and watercolor monopype, 13 7/8 x 10 3/4 inches, Documented by Cary Wittier, 2014.
- Amy Feldman A '09, *Holy Over*, acrylic on canvas, 75 x 75 inches, 2014.
- Ash Ferlito A '12, *ON/OFF*, felt fabric, 52 1/2 x 31 1/2 inches, 2014.
- Jaseun Lee A '11, *Space/Launch*, 2014 (back cover).

Dedicated to the life and practice of Zizi Raymond (A '85 & Sculpture Tech '89), 1960-2014.



Daniel Bozhkov (A '90, F '11), *Wesserunsett Boogie-Woogie* (2014), commissioned sidewalk-facing fresco sign



Mary Mattingly (A '10), *Mobile Food Forest* (2014), commissioned sculpture for outdoor rear space (alternate view) / Photo Nat Ward



Installation by Beverly's (A '12) at SPACE/LAUNCH



Kolbeinn Hugli (A '14) DJing at the Valentine's Day Reunion during CAA

VARIATIONS VIII

DECEMBER 18, 2014
INAUGURAL ALUMNI PERFORMANCE

Early conversations about the vision of 136 W. 22nd Street stressed the importance of evoking a sense of place that both was distinct in New York and also tied back to our home in Maine that has had such a singular impact on the lives and practices of so many artists. In many ways, the re-staging of John Cage and Merce Cunningham's 1967 performance of *Variations VIII* was the perfect piece to launch our programming—it was an exploration of site, it was rooted in the architecture of our campus in Maine, it was an engagement with our archive, which is now housed at 136 W. 22nd Street, and it was an experience of locating ourselves in a new context.

Part of the challenge that Cage and Cunningham took on at Skowhegan in 1967 and have left for us is to "accept an invitation to a distant place" and use only that which is found in the space to create a score. John Dombroski & Ander Mikalson stayed true to the notation, using space and its contents as inspiration and instrument. The story of the original performance of *Variations VIII* can only exist in an imaginary, and like Skowhegan itself must be recreated, reinvented and reenvisioned each time it is performed.



Photo Maria Baranova



Michael Scoggins (A '03) with his commissioned donor wall / Photo Maria Baranova

STAGING SEX, STAGING SELF

FEBRUARY 18 – MAY 6, 2015
A PERFORMATIVE LECTURE SERIES

This lecture series

plunges the ambiguities of identity formation. It moves over and under that line where the body meets language and where that same body asks, "How is it that I am this way?"

This lecture series

lives under the umbrella of performance art, but it is also theater. It's ABOUT theater. It collides with a certain kind of academic pursuit and presentation that plumbs boundaries of what "academic" is or might be. It lays claim to its own performativity – its writing—as a non-linear composition that may or may not have been written for us before we even showed up.

This lecture series

hinges on the production of gender, theatricality and culture. These are self-conscious and self-aware enactments and - should we say - pageants, in a framework of kindred ideas. We hope you will enjoy them. We hope you will enjoy them.



WEDNESDAY, APR 8

ESTEBAN DEL VALLE (A '11)
INVISIBLE TYRANTS: FINDING THE MASTERS BEYOND THESE SHACKLES

Esteban del Valle addressed the hierarchal structures embedded in the conversation of privilege vs. accessibility and how it relates to notions of "good" and "bad" art: "Growing up as a graffiti artist and having never lost my love for painting walls and illustration, I have found myself split between two different "art worlds" with two different approaches to creativity. After watching a room full of my Skowhegan peers laugh and mock several painters I found myself relating to, I was forced to ask the question, "Who is right in this situation?"



WEDNESDAY, APR 15

ELLIE KRAKOW (A '08)
RECOVERY OR SEMBLANCE OF RECOVERY

Ellie Krakow hosted a conversation that explored how we manage to pick up the broken pieces and put them back together in some inherently altered form. Using her research into the ethics and techniques

of restoring ancient sculpture as a jumping off point the discussion probed at how and why we recover. And it explored the role that staging plays in this processes—where staged and real recoveries meet, and how they affect and support one another.

Participants in the dialogue were: Aida Šehović, creator of "Što Te Nema?" a participatory nomadic monument that commemorates the Bosnian genocide, and Sarah Plazas, a Tibetan Buddhist scholar, translator and practitioner who suffered and recovered from a severe burn.

WEDNESDAY, APR 22

CHELSEA KNIGHT (A '08) & AUTUMN KNIGHT
LATENCIES



Knight + Knight's *Latencies*: "We want to tell you our two stories: latent and manifest. This is our hysterical story (hysterical in the Freudian sense), the story of our alliance, our fraudulence, our transgression, our passive aggression, our competition, our sexuality (or rather hypersexuality), and our relation to the world, as women. How we relate to one another has everything to do with how we relate to you, and who YOU are defines everything, because I am only NOT YOU, and you are only NOT ME"



Jonathan VanDyke looks for himself in a family photograph taken during his childhood. The picture shows his adopted Uncle wearing his mother's dress while holding the trunk of a stuffed elephant in his mouth. VanDyke's lecture explored the issues faced by queers who were children during the AIDS crisis and 80s culture wars, and how the hyper-capitalism and theatricality of this period nurtured a certain type of passing (including his own). Augmented by research into a gay panic that happened in his rural hometown, passages from the soap operas he watched as a child, and memories of a disappeared Uncle, he evoked the repressed ghosts of a lost generation of queer mentors while exploring his own transition from theatrical youth to closeted jock.

WEDNESDAY, MAY 6

JONATHAN VANDYKE (A '08)
SELF EVIDENCE

THE IMPOSSIBLE

MAY 14, 2015
ALUMNI VIDEO SCREENING



Nathan Boyer, still from *Robot's Alpine Quest* (2010)

Featuring:

Seline Baumgartner (A '14)
Lynda Benglis (F '78, '79, '99)
& Robert Burtis
Claudia Bitran (A '14)
Nathan Boyer (A '01)
Annette Cyr (A '76)
Sara Eliassen (A '10) & Luca Antonucci
Kolbeinn Hugli Höskuldsson (A '14)

Chaja Hertog (A '12) & Nir Nadler (A '12)
Lindsay Lawson (A '13)
Nicolas Mastracchio (A '12)
Ivan Monforte (A '04)
Birgit Rathsmann (A '04)
Gretchen Skogerson (A '09)
Willie Stewart (A '14)
George Terry (A '08)

More than merely unlikely or improbable, the impossible occupies a realm of the miraculous, the unbelievable, the elusive, or the biblical/mythical. As technology has advanced and science has offered explanations and discoveries, it becomes harder to contemplate the impossible.

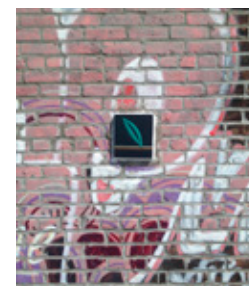
Once in the realm of science-fiction and visions of yesterday's tomorrows, even human life on Mars, artificial intelligence, human genetic engineering, and the ability to bring back long extinct species all seem within the possible, if not the inevitable. With these leaps of science and technology, the impossible occupies more space referring to the fabled, sacred, or sublime, conjuring up images of immaculate conceptions, resurrections, or divine, supernatural powers.

It can also refer to the elusive, the unattainable object of desire, the endless white whale quest, or that which cannot be quenched. Related to this desire is the obsessive, fanatical, or extreme feat of human endurance.

The impossible invokes grade-school memories of furiously searching through *The Guinness Book of World Records* and marveling at impossible lengths of hair, prolonged years of sustained hiccups, or absurdly dedicated acts of physical repetition and endurance.

The impossible also stands for the fifth consecutive year of Skowhegan Alliance video programming—a small feat in itself.

Exploring The Impossible, The Skowhegan Alliance was pleased to present these eighteen video artists and collaborators spanning nearly 40 years of Skowhegan alumni.



WEDNESDAY, FEB 18
NADIA AYARI (A '06)

WHAT YOU NEED

Nadia Ayari read a selection of prose and poetry that touched on fig holes, Africa and the future.



WEDNESDAY, MAR 25
CHRIS DOMENICK (A '12)
RAMAPO ET CETERA

Chris Domenick analyzed the design and architecture of one rest stop in upstate New York (Ramapo, NY) as a consequence of the evolution of American highway ideology. He asked how the rest stop functions in terms of a 'site'

or 'location' with geographic specificity. The lecture operated as a psychic global travelogue, considering the construction and dissolution of individual subjectivities. The lecture highlighted the social and sexual ruptures in this story and use them as a point of departure to discuss political boundaries, selfies, and the relationship between space and global networks.

Alumni Programs

Fall 2013 – 2014

STUDIO SPACE IN CRISIS

MARCH 27, 2014

CABINET, BROOKLYN, NY

Skowhegan, Art F City, and the Artist Studio Affordability Project (ASAP), co-hosted "Studio Space in Crisis," a panel discussion on the rising cost of studio and living space, and issues of gentrification affecting artists and the cultural community within New York City. Moderated by Art F City's Editorial Director Paddy Johnson, the panelists—Brooklyn Deputy Borough President Diana Reyna; artist and Placeholder member Shawn Gallagher; urban planner Tom Angotti; and artist and ASAP member Jenny Dubnau—spoke to a packed house.

While there was no disagreement on the essential problem, Reyna and Angotti offered a broader perspective—relating the struggle of artists to the larger community of working families. Angotti reminded the audience that while today's real estate issues are extreme, the problem of affordable living and working space has a long and cumulative history in New York City.

The panelists discussed an uncomfortable dynamic: artists are often pulled into cycles of gentrification, where they get affordable space for a few years, but as the neighborhood becomes more "desirable," they are forced out. Areas that were once industrial zones, that fostered working industry and jobs and offered affordable workspaces for artists, have become sites for new condos and businesses catering to an upwardly mobile community. Combined with the steady erosion of rent-regulation, the rising rents and speculative nature of real estate development have consistently forced a migration of the creative and working classes to other neighborhoods.

Solutions to such a nebulous problem have been difficult to identify; however, a number of advocacy groups in the city are focused on different aspects of the problem. Placeholder researches collective purchasing to convert buildings to non- or low-profit entities, in which rents are kept below market. Putting buildings under restrictive covenant (restricting use to studio and work) would in effect reduce the value of the building, and put the brakes on gentrification. Reyna, who grew up in Williamsburg and Bushwick and now represents the neighborhoods, has witnessed extraordinary change, and was joined by audience members in advocating for working with non-artist communities to address issues of gentrification through legislative change.

Most on the panel agreed that commercial rent control (which existed in New York City from the mid-1940s to the mid-1960s) would be the ideal solution, however advocacy work around that topic faces significant challenges (for example New York State Law requires all rent regulations to be passed on a state level). It is clear that as the city becomes less hospitable to artists, change has to occur from a civic base. Skowhegan alumni Lee Boroson (A '89), Rob Swainston (A '07), and Eve Sussman (A '89), among others, have affected real change with the Loft Laws in Albany, NY.

– Tamara Zahaykevitch (A '95) & Jenny Dubnau (A '95)



Relevant Reading

THE IMPETUS

Johnson, Paddy. "Industry City Forces Artists Out of Studios Then Launches Giant Art Show." Art F City. 18 Oct. 2013.

Gonzalez, Erik. "The Plot Thickens: A Personal Account of Industry City's Bid to Take Over Sunset Park." Art F City. 21 Oct. 2013.

Soskolne, Lise. "Who Owns a Vacant Lot." Shifter Magazine. 22 Oct. 2013.

Satow, Julie. "Industry City, the SoHo of Sunset Park." The New York Times. 18 Jan. 2014.

THE TREND

Kreinin Souccar, Miriam. "Artists Fleeing the City." Crains New York Business. 14 Nov. 2010.

Rosler, Martha. "Culture Class: Art, Creativity, Urbanism, Part I." E-flux. Dec. 2010.

Byrne, David. "If the 1% Stifles New York's Creative Talent, I'm out of Here." Guardian News and Media. 07 Oct. 2013.

Cotter, Holland. "Lost in the Gallery-Industrial Complex." The New York Times. 17 Jan. 2014.

Moss, Jeremiah. "On Spike Lee & Hyper-Gentrification, the Monster That Ate New York." Jeremiah's Vanishing New York. 3 Mar. 2014.

Buckley, Cara. "Rising Rents Leave New York Artists Out in the Cold." The New York Times. 08 Mar. 2014.

THE FUTURE

Fleetwood, Blake. "The New Elite and an Urban Renaissance; The Exodus from the City; A New Kind of Industry: Ideas, The Flight from the Suburbs; Reclaiming New York: What About the Poor?" The New York Times. 14 Jan. 1979.

Angotti, Tom. "Five Things You Can Do About Gentrification in New York City." Tom Angotti's Wordpress. 18 Feb. 2013.

Johnson, Paddy, and Whitney Kimball. "Jules De Balincourt Issues Call to Arms Against Bushwick Gentrification." Art F City. 9 June 2013. Web.

Jonathan, Bowles. Time to be Creative: Taking Advantage of the Real Estate Downturn to Create Affordable Spaces for NYC's Creative Sector. New York: Center for an Urban Future, October, 2010.

Alumni News

Exhibitions

A selection of news and images by alumni and past faculty. The following exhibitions occurred between November 1, 2013 and October 31, 2014.



Willard Boepple (A '63), *Monoprint 15-5-14E* (2014)

1956/57

Penelope Jencks
Leonard Bernstein, Highwood House, Tanglewood, Lenox, MA; *Studio Environments*, Berta Walker Gallery, Provincetown, MA

1957/58

Suzanne Hodes
Open Studios Event, Artists West Studios, Waltham, MA

1960

Dave Getz
Small Stories, Fairfax Library, Fairfax CA; *Art From The Heart*, Annual Exhibition of invited artists, Sonoma State University Art Gallery, CA

Carol Pepper-Cooper

Celebrations (Distinguished Artist of 2014, solo show), Arts Society of Kingston, Kingston, NY

1961

Ruth Fine
Procession: The Art of Norman Lewis, Pennsylvania Academy of the Fine Arts, PA

Peter Lipsitt

Portals, Milton Cemetery, Milton, Ontario, Canada; *Hell and High Water*, HarborArts, Boston Shipyard and Marina, MA

1963

Willard Boepple
Willard Boepple: Monoprints, Lori Bookstein Fine Art, NY; *Recent Sculpture*, Lori Bookstein Fine Art, NY; *Carved, Cast, Crushed, Constructed*, Freedmanart, NY

Will Brown

Invitational Exhibition of Visual Arts, American Academy of Arts and Letters, NY; *Philadelphia Photographer: Will Brown*, Fabric Workshop & Museum, Philadelphia, PA; *Will Brown*, Laurence Miller Gallery, NY

Diana Hosley (Burchfield)

Solarscape, Pennsylvania Watercolor Society International Annual Juried Exhibit, Warren, PA; *Moonlight*, Watercolor USA 2014, Springfield Art Museum, MA

Sandy Walker

The Figure: A Bay Area Legacy, Gary Francis Fine Arts, Alameda; *The Breakfast Group: A Half Century of Java and Jive*, The Richmond Art Center, Richmond, VA / Carl Cherry Center for the Arts, Carmel, CA; *8th Annual California Centered: Printmaking*,

Merced Multicultural Arts Center, Merced; *100 Years in Print: California Society of Printmakers Centennial Celebration*, San Francisco Center for the Book, CA / Commonwealth Club of California, San Francisco, CA

1966

David Reed
Recent Paintings, Galerie Schmidt Maczollek, Cologne, Germany; *Outside the Lines: Rites of Spring*, Contemporary Arts Museum; *Thinking through Painting*, Royal Swedish Academy of Fine Arts in Stockholm, Sweden

Gail Salzman

Dialog in Color, Drawing Room Gallery, Cos Cob, CT; *Reflections*, Kent Museum, Calais, VT

Rochelle Woldorsky

Water Works, Duluth Art Institute, Duluth MN; *Or Chadash, A New Light*, Jewish Artists' Laboratory, Minneapolis, MN

1967

Herb Babcock
Traveler, Habatat Galleries International, Royal Oak, Michigan, Oakland County;

Composition With Yellow, Sandra Ainsley Gallery, Toronto, Ontario Canada

Edgar Franceschi

Edge-ceramic Sculptures, The Clay Studio, Philadelphia, PA

1968

Christy Bergland
Cycles of Change: The Seasons at Great Pond, Himmelfarb Gallery, Maryland University of Integrative Health, Laurel, MD; *The Big Show*, Creative Alliance at the Patterson, Baltimore, MD

Barry Nemett

Paintings and Drawings by Barry Nemett, Guilin Museum of Art, China; *Sharper Focus*, Ethan Cohen Fine Arts, New York NY; *Sharper Focus, Part II*, artStrand, Provincetown, MA / Ethan Cohen Gallery, New York, NY; *La Lumiere Fantastique: Brittany Shines in Baltimore*, The Leidy and Riggs Gallery, MICA Graduate Studio Center, Baltimore, MD

Lorna Ritz

A Travelogue in Color, The French Cultural Center, Boston, MA; *Dunes and Sky*, Cape Dune Shack C-Scape, Provincetown, MA; *Solo Exhibition*, State House, Boston, MA

Ken Rush

Poured Landscapes, Hudson and Laight Gallery, Hudson, NY

1969

Marilyn Propp
Confluence/Undercurrents: Marilyn Propp and David Jones, Illinois Wesleyan University, Merwin Gallery, Bloomington, IL; *Collaborations II*, Printworks, Chicago, IL

1970

David J. Einstein
Permanent Collection, Crocker Art Museum, Sacramento, CA; Group Exhibition, Hohmann Fine Art, Palm Desert, CA

Chuck Forsman

Seen in Passing, Denver Art Museum, Denver, CO; *Markers*, Robischon Gallery, Denver, CO; *Walking Magpie*, Published by George F. Thompson Publishing, Staunton, VA

Susan Heideman

Surface Tension, Trustman Gallery, Simmons College, Boston, MA; *Animals Dreamed & Dreaming*, Concord Art Association, MA

1972

Joan Branca
Local Color: Flora and Fauna, Gallery North, Setauket, NY; *Passages: Recent Work*

by Joan Branca, Blend Studio Gallery, Nashville, TN; *Poetry and the Art of Eating*, Gallery North, Setauket, NY; *Long Island Biennial*, The Heckscher Museum of Art; *Gallery Artists*, Islesford Artists Gallery, Islesford, ME

Thomas McNulty

On The Wall, Carter Burden Gallery, New York, NY; *Art and Faith*, Whitestone Gallery, Philadelphia PA; *What You See Is What You Get*, Carter Burden Gallery, New York, NY

Dena Schutzer

Second Nature: Beauty in the Ordinary, TransForm Gallery, New Rochelle, NY

Hunt Slonem

The Worlds of Hunt Slonem, Morris Museum of Art, Augusta, GA

1973

Judith Amdur
Solo Exhibition, Audubon Center at Debs Park, Los Angeles, CA

1974

Michiko Itatani
Passage: Michiko Itatani and Jake Webster, South Bend Museum of Art, South Bend; *The Gift of Broken Tracking Devices: Thinking with our hands*, Experimental Sound Studio, Chicago, IL

Walter O'Neill

Nature Interpreted, Hudson Guild Gallery, New York, NY; *All of the Above*, Church of St. Paul the Apostle, New York, NY; *Off The Wall/ Fresco Painting*, Hudson Guild Gallery, New York, NY; *LES at the Yard on Delancey*, The Yard on Delancey, New York, NY; *Contemporary Fresco Painting*, Hudson Guild Gallery, New York, NY

David Rich

Sideshow Nation, Sideshow Gallery, Brooklyn, NY; *Beyond the Window*, University of Minnesota, MN; *Never Mind the Bollocks*, Life on Mars Gallery, Brooklyn NY; *B Sides & Bootlegs*, Studio No4, Brooklyn NY; *Full House*, Ethan Pettit Gallery, Brooklyn, NY

1975

Deborah Buck
The Windows of Buck House: Fabulous Fictional Females, published by Acanthus Press, New York, NY

Joanna I. Kao

Array, Berkeley Art Center, Berkeley, CA; *Feature*, Berkeley Art Center, Berkeley, CA; *Community of Artists*, Danforth Museum, Framingham, MA

1976

Natasha Mayers
World Banksters, Space Gallery, Portland, ME

1977

Mary Armstrong
Troposphere: @12 Kilometers of Heaven, Center for Maine Contemporary Art, Rockport, ME; *Mary Armstrong Paintings*, Cross MacKenzie Gallery, Washington, DC; *Personal Terrain*, Concord Art Association, Concord, MA

Stoney Conley

Northern Sky: Works by Stoney Conley, Rhodes Arts Center Gallery, Northfield Mount Herman, Gill, MA

Anita Glesta

WATERSHED, Thames River Festival, London, UK

Paula S. Heisen

Interrogation: Flowers Open Studio, *The Wills Building*, Queens, NY

Christina Hutchings

Women Artists in the Collection, Bermuda National Gallery, Hamilton, Bermuda; *Highlights from the BNG Collection*, The Bermuda National Gallery; *A Sense of a Place*, BNG East, St. George's, Bermuda; *Bermuda Biennial*, Bermuda National Gallery, Hamilton, Bermuda

Kathy Soles

Geographical Point, Hallspace Gallery, Dorchester, MA; *LandscapeX2*, The Narrows Center for the Arts, Fall River, MA

Lindsay Walt

Aligned Works: Jill Levine and Lindsay Walt, State University of New York, Geneseo, NY; *The Brucennial, 2014*, The Bruce High Quality Foundation; *Between a Place and Candy: New Works in Pattern + Repetition + Motif by Fifteen Artists*, Matteawan Gallery, Beacon, NY

1978

Peter Dudek
Clouds, Lesley Heller Gallery, New York, NY; *Blueprint*, Union College; *Following the Line*, Hudson Valley Community College, Troy, NY; *North Adams Murals*, Downtown North Adams, MA; *Susan Hartung Exhibition*, Hudson Valley Community College, Troy, NY

Tamara E. Krendel

Animals Dreamed & Dreaming, The Concord Art Association, Concord, MA

Carol Perroni

Common Ground, Community Gallery, Santa Fe, NM; *Merge*, African American Performing



Water Kerner (A '83), *Memory Pod* (2013), one of ten light sculptures, dimensions variable / Sylvia White Gallery, CA

Arts Center, Albuquerque, NM; *Signed, Sealed, Delivered*, Fuller Lodge Art Center, Los Alamos, NM

Tyler K. Smith

New Works 2014, Broward College, Duffy Larson Gallery, Davie, FL; *World Aids Museum*, Broward Center for the Performing Arts, Wilton Manors, FL

Tabitha Vevers

Striking Resemblance, Zimmerli Art Museum, New Brunswick, NJ

1979

Sue Collier

Works on Paper, Saraghi Art Space, Victoria; *40 Years of Women Artists at Douglass Library*, Mary H. Dana Women Artists Series 40th Anniversary Virtual Exhibit (1971-2011), New Brunswick, NJ

Fred Cray

Unique Photographs, Janet Borden Inc, New York, NY

Deirdre Leber

Solo Show, Hampshire College Art Gallery, Amherst, MA

Jean Koeller

City of Kettering Commission, Government Center, Kettering, OH; *Group Show*, Keny Galleries, Columbus, OH; *Jean Koeller, Recent Work*, Wittenburg University, Springfield, OH

Jay Shinn

Neonish, Leila Heller Gallery, New York, NY

Ellen Soffer

Ellen Soffer: The Shimmer Series, Peacock Gallery, Middle Georgia State College, Cochran, GA

Leslie Wilkes

Marfa in Milan, Orso 16, Milan, Italy; *Squared*, McMurtrey Gallery, Houston, TX; *Optic Verve*, Women & Their Work, Austin, TX; *Parallel Process*, Barry Whistler Gallery, Dallas, TX

1981/82

David Little

Art of Katahdin: The Making of an Art Book, USM Glickman Library, Portland, ME; *Monhegan Artists' Residency 25th Anniversary Exhibition*, Thos. Moser Cabinetmakers, Freeport, ME; *The Kienbusch Legacy: A Family of Artists*, Palmina F. & Stephen S. Pace Galleries of Art, Fryeburg, ME

1982/84

Richard Haas

Richard Haas: Projects and Proposals, Hypothetical, Unrealized, Destroyed: 1975-2013, FX Fowle Architects, New York, NY; *Annual 2014: Redefining Tradition*, National Academy Museum; *Inside the Artist's Studios: Small-Scale Views*, Bruce Museum, Greenwich, CT; *Group Shows Harmon Meek Gallery*, Harmon Meek Gallery, Naples, FL

Kim Abraham

36th Anniversary Show, Zenith Gallery, Washington, DC; *City of Tiny Lights*, Salisbury University Gallery, MD

1982

David Brody

8 Ecstasies, Pierogi/The Boiler, Brooklyn, NY

Daphne Cummings

Maine Northern Skies, LC Bates Museum, Hinkley, ME

Paul Smith

The Real Estate Show, ABC No Rio, New York, NY

1983

Water Kerner

Here Today Gone Tomorrow, Sylvia White Gallery, Los Angeles, CA; *Illuminated Triptych*, Alexandria Museum of Art, Alexandria, LA; *Blue*

Danube Family Portrait, Los Angeles Municipal Art Gallery (LAMAG), Hollywood, CA

Jean Sausele Knott

New Year/New Artists, Long View Gallery, Washington DC

1984

Nancy Cohen

Shattered: Contemporary Sculpture in Glass, Frederik Meijer Sculpture Park, Grand Rapids, MI; *Paper Cuts*, Gallery Gaia; *In-Site: The Creative Process in Plain View*, Paul Robeson Galleries, Rutgers University, Newark, NJ; *Road Kill*, Athens Cultural Center, Athens, NY

Robert Harms

Summer Sheets: Selected Works On Paper, Brick Walk Fine Art, West Hartford, CT

Maria Katzman

Quiet Space, Greene County Council on the Arts, Catskill; *A View of Woodstock*, WFG Gallery, Woodstock, NY

Mindi Katzman

Prince Street Gallery, 6th Annual Juried Exhibition, Prince Street Gallery, New York, NY; *Inky Spokes: A Traveling Exhibition of Bicycle Inspired Art* (traveling, originating Tacoma Art Museum); *Current Work*, The Brick House Gallery, Tacoma, WA

Martin Landau

Death by Suburb: New Paintings, Martin Landau, A.J. Dillon Gallery, Atlantic Highlands, NJ; *Summer Show*, Quiet Life Gallery, Lambertville, NJ; *Take Me Out to the Ballgame*, AJ Dillon Gallery, Atlantic Highlands, NJ

Robert L. Pollien

Robert Pollien, New Works, Dowling Walsh Gallery, Rockland, ME; *Monhegan, the Unfailing Muse*, Archipelago Gallery, The Island Institute; *Sketching Crows and Coastline*, Grand Manan Museum, NB, Canada

Rachel Stevens

Whether, Nicolaysen Art Museum, Casper, WY; *You Are Here*, permanent site-specific sculpture, Ventana Ranch Park

1985

Dozier Bell

Dozier Bell, Danese / Corey Gallery, New York, NY; *Charcoal!*, Schick Art Gallery, Skidmore College, NY; *Invitational Exhibition of Visual Artsits and Exhibition of Work by Newly Elected Members and Recipients of Honors and Awards*, American Academy of Arts and Letters, New York, NY; *A Gathering*, Georgia State University, Atlanta, GA

Marilyn Friedman

Primal Images-Pigment & Clay, Pomona Cultural Center, Pomona, NY

Sarah Haviland

Aerie, Beacon 3D, Beacon, NY; *Columbina*, Governors Island, NY; *Transformation*, Governors Island, NY; *Reflection Bench*, Pratt Sculpture Park, Brooklyn, NY; *Trio*, Grounds for Sculpture, Hamilton, NJ

Barbara Penn

Focus-Five Women Artists, Davis Dominguez Gallery, Tucson, AZ; *Art Faculty Exhibition*, University of Arizona Museum of Art, Tucson, AZ

Megan Marlatt

Sight Specific: A Selection of American Perceptual Painters, Concord Art Association, Concord, MA; *Art in Odd Places-FREE*, New York, NY; *Art in Odd Places-NUMBER*, Greensboro, NC; *Dumbo Arts Festival*, Brooklyn, NY

Barbara Penn

On Common Conscience, Carol House Gallery, Keene State College, Keene, NH; *Animal Sign / Animal Mind III*, The Kishwaukee Community College Art Gallery; *Exploded View Invitational: The Altered Arizona Post Card Show*, Exploded View Gallery, Tucson, AZ; *Arizona Higher Education Sustainability Art Show*, Union Gallery, University of Arizona Campus, Tucson, AZ; *Arts Speak*, Tucson Museum of Art, Tucson, AZ; *Small Things Considered*, Davis Dominguez Gallery, Tucson, AZ

Virginia Pierrepont

Basement Series, M55/ Noho Gallery, New York, NY

1986

Tom Burckhardt

Tom Burckhardt-Paintings, Center fro Maine Contemporary Arts, Rockport, ME; *Cast Paintings*, Gregory Lind Gallery 49 Geary Street, San Francisco, CA; *FULL STOP*, Columbus College of Art and Design, Columbus, OH; *Tom Burckhardt and Jennifer Coates*, Fred Valentine Gallery, Ridgewood, NY

Yvonne Estrada

Large Drawings From The Past Decade, Jason McCoy Gallery, New York, NY; *Yvonne*

Skowhegan CONVERSATIONS

SkowheganCONVERSATIONS is a discussion series celebrating the significance of the dialogue that takes place outside of the studio, the classroom, and the gallery. Many generative moments at Skowhegan happen between formal discussions, critiques, and lectures, when participants and faculty have the opportunity to delve deeply into the topics that inform their work and practices. These moments happen while lounging after dinner, on the lawn in the afternoon sun, and in a myriad of other landscapes and times when boundaries are dissolved, and real discourse can take place.



Left to right: **Adrienne Edwards**, **Zachary Fabri** and **Pope.L**

CONVERSATION #5: POPE.L & ZACHARY FABRI

NOVEMBER 15, 2013

THE DRAWING CENTER, NEW YORK, NY

Performa 13 hosted Three Duets, Seven Variations, a series of performances that paired six intergenerational artists for seven programs as part of Radical Presence: Black Performance in Contemporary Art. In advance of their Duets performances, Pope.L (A '96, F '04) and Zachary Fabri (A '13) met for the first time, and along with Associate Curator Adrienne Edwards, discussed the links between their practices, and dealing with shared themes to different ends.



Tabitha Vevers (A '78), *DUÆL: Lee + Man (after Man Ray + Lee Miller)* (2013) oil on ivory with two metronomes

SkowheganWALKS



Arthur Simms (A '85, F '10) speaking to the group

COME TOGETHER: SURVIVING SANDY, YEAR 1

DECEMBER 15, 2013
INDUSTRY CITY, BROOKLYN, NY

Including work by:

Lynda Benglis (F '78, '79, '99)
Julia Bland (A '13)
Michael Berryhill (A '07)
Katherine Bradford (F '09)
Beth Campbell (A '97)
Francis Cape (A '89, F '08)
Martha Diamond (F '77, '83)
Mark DiSuvero (F '83)
Lois Dodd (F '79)
James Hyde (F '03)
Jean Jacques DuPlessis (A '12)
Rackstraw Downes (F '75, '81, '02)
Bill Jensen (F '83, '86)
Alex Katz (A '49, '50, F '60, '63, '64, '67, '71, '75, '95)
Niils Karsten (A '02)
Megan Kincheloe (A '13)
Nicola Lopez (A '02)
Marlene McCarty (F '11)
Mary Mattingly (A '10)
Josiah McElheny (F '08)
Donald Moffett (F '04)
Nyeema Morgan (A '09)
Carrie Moyer (A '95, F '10)
Sheila Pepe (A '94, F '13)
Matt Taber (A '12)
Joel Shapiro (F '76, '80)
Arthur Simms (A '85, F '10)
Kiki Smith (F '93)
Rob Storr (A '78, F '02)
Mickalene Thomas (F '13)
Ursula von Rydingsvard (F '88)
Nari Ward (A '91, F '03)
Ishmael Randall Weeks (A '07)

Estrada—Large Drawings from the Past Decade, Jason McCoy Gallery, New York, NY

Bart Gulley
2013 Artists of the Mohawk-Hudson Region, The Hyde Collection, Glens Falls, NY

Gail E. Spaien
Gail Spaien and Dozier Bell, Aucocisco Galleries, Portland, ME; *New Acquisitions*, University of New England, ME

1987
R.M. Fischer
Life Force, B2OA, New York, NY

Margaret Libby
6th National Juried Show, Prince Street Gallery, New York, NY; *Maine Northern Skies: Clear Light*, L.C. Bates Museum, Lewiston, ME

1988
Teresa Booth Brown

Teresa Booth Brown: Paintings and Drawings and an Installation: A Unified (Edible) Scheme, Anderson Ranch Arts Center, Snowmass Village, CO; *Introductions*, Michael Warren Contemporary, Denver, CO; *Teresa Booth Brown: Recent Work in conjunction with Anderson Ranch Arts Center*, Quintenz Gallery and David Floria, Aspen, CO

Nan Lombardi
City Days and Country Nights, Sanford Smith Fine Art, Great Barrington, MA; *City Days and Country Nights*, Sanford Smith Fine Art, Great Barrington, MA

Betsy Meyer-Donadio
Friends and Neighbors Show, Pterro Gallery, South Orange, NJ; *Solo Show Collage*

Stories, Wellspring Health Collective, NJ; *Group Show*, Perch Home, Maplewood, NJ

Christopher Saucedo
Oyster Shell Kingdom, Acadiana Center for the Arts, Lafayette, LA

Ilona Sturm
Street Photography: Greece, Berkeley Public Library: Central Branch, Berkeley, CA

1989
Connie Hayes
Recent Acquisitions and Selections from the Permanent Collection, University of New England Art Gallery, Portland, ME; *One Person Exhibition*, Dowling Walsh Gallery, Rockland, ME; *Monhegan Artists Residency 25 Years*, Thos. Moser Art Gallery, Freeport, ME; *Connie Hayes, New Paintings*, Dowling Walsh Gallery, Rockland, ME

1990
Gregory W. Coates
Gregory Coates, Namdi Contemporary Art, Miami, FL; *Consider This*, N'Namdi Contemporary Miami, FL; *I KAN DO DAT: Contemporary Abstract Art*, Rush Art Gallery, New York, NY & Skylight Gallery, Brooklyn, NY

Lilian Garcia-Roig
Time-Sensitive (solo), Martin Museum of Art, Waco, TX; *Natural Exuberance (solo)*, Arts and Culture Center, Lake Charles, LA; *A Mysterious Clarity 2.0*, 621 GALLERY, Tallahassee, FL; *Important Cuban Artworks (Volume 11)*, Cernuda Arte, Coral Gables, FL; *A Way of Remembering (Abstract Women Artists)*, Fort Worth Art Center, TX;

Latin America, Phillips Gallery, New York, NY; *Cernuda Arte*, Expo Chicago, IL; *Valley House Gallery*, Dallas Art Fair, Dallas, TX

Jinnie Seo
Spectrum Spectrum, The Plateau, Seoul, Korea; *Red Clouds*, Muziekegebouw aa't IJ, Amsterdam, Netherlands; *Cho Hee: Words and Beyond II*, Muziekegebouw aa't IJ, Amsterdam, Netherlands

Kate Shepherd
The Something, Galerie Lelong, New York, NY; *Estampes*, Galerie Lelong, Paris, France; *The Telephone Game*, Galerie Lelong, New York, NY

Randy Wray
Morphology of the Print, Lehman College of Art Gallery, Bronx, NY; *Paperazzi 3*, Janet Kurnatowski Gallery, Brooklyn, NY; *Sideshow Nation II*, Sideshow Gallery, Brooklyn, NY

1991
Patricia Cronin
Patricia Cronin: Le Macchine, gli Dei e i Fantasmii (Machines, Gods and Ghosts), Musei Capitolini Centrale Montemartini Museo, Rome, Italy; *Come Together: Surviving Sandy, Year 1*, Dedalus Foundation, Industry City, Brooklyn, NY

Alexandra Feit
New Work, Yukon Art Center, Whitehorse, Yukon, Canada; *New Work*, Sheldon Museum & Cultural Center, Haines, AK

Elizabeth Hazan
Sideshow Nation II: At the Alamo, Sideshow Gallery, Brooklyn, NY; *Paperazzi III*,



Angela Ellsworth (A '93), *Close to You* (2013-2014), 25,747 pearl corsage pins, fabric, steel, 12 x 24 x 13 in / Crystal Bridges Museum of American Art

Janet Kurnatowski Gallery, Brooklyn, NY; *Whitney Houston Biennial*, 20 Jay Street/Dumbo, Brooklyn, NY; *Are You From Around Here?* Janet Kurnatowski Gallery, Brooklyn, NY

Jann Nunn
Spirit of the Man (sculpture), Paradise Ridge Sculpture Grove, Santa Rosa, CA; *Jann Nunn: Breathing Space*, Mercury 20 Gallery, Oakland, CA; *Seventeen*, Hammerfriar Gallery, Healdsburg, CA; *Sculpture*, Richmond Art Center, Richmond, CA; *Divergent Acts*, Sonoma State University Library Gallery, Rohnert Park, CA

Paul Santoleri
Feathered Dragon, DUMBO Arts Festival, Brooklyn, NY; *ARTS/INDUSTRY collaboration, revelation*, John Michael Kohler Arts Center, Sheboygan, WI; *Collector's Choice*, Sylvia White Gallery, Ventura, CA; *Summer*, Galerie Ligne 13, Paris, France

1992
Tim Doud
Outwin Boochever Portrait Exhibitoin, Smithsonian, National Portrait Gallery, Washington, DC; *Tim Doud*, New Bedford Museum of Art, MA; *Group Show*, Passenger, Detroit, MI; *Virilit-HE*, Silber Art Gallery, Baltimore, MD

Dawn Chandler
The Outback Series, Salon X, Taos, NM

Robert Grant
Lemonsubmarine, Cut/Log the Clemente, New York, NY

Diana Guerrero-Maciá
A-Z.2, Elmhurst Museum of Art, Elmhurst, IL

Tracy Miller
Tracy Miller: Food, 527 Madison Avenue, New York, NY; *A Moveable Feast*, Therese A. Maloney Gallery, St. Elizabeth College, Morristown, NJ; *Tracy Miller: Big Paintings 1997-2013*, American University Art Museum at the Katzen Arts Center, Washington, DC; *Cancel All Our Vows*, Dodge Gallery, New York, NY; *Let's Go Let Go*, 33 Orchard, New York, NY

Charlotte Schulz
Gobsnacked, ODETTA, Brooklyn, NY; *The Poetics of Space*, Dunedin Fine Art Center, Dunedin, FL

1993
Warren Craghead
The Fire To Say, Winkleman Gallery, New York, NY; *REBUS*, Riverviews ArtSpace,

We Are Waiting In A Forest, WriterHouse, Charlottesville, VA; *Sequential Investigations*, STPLN, Malmö, Sweden

Angela Ellsworth
New Acquisitions (gifts from Kent and Vicki Logan), Phoenix Art Museum, AZ; *In God We Trust: The Religious Mosaic in America*, Zacheta National Gallery of Art, Warsaw; *State of the Art: Discovering American Art Now*, Crystal Bridges Museum of Art, Bentonville, AK; *Linear Thinking*, Scottsdale Museum of Contemporary Art, AZ

Erika Rane
The Last Brucennial, 837 Washington Street, New York, NY; *Rooted Movements*, LMAKprojects, New York, NY

Cathy Sarkowsky
10x10x10Tieton, Tieton Arts & Humanities, Tieton, WA; *in/visible*, Melissa Morgan Fine Art, Palm Desert, CA

Katarina Wong
Cuban America: An Empire State of Mind, Lehman College Art Gallery, New York, NY; *Big Head Brigade Performance: Free*, Art in Odd Places, New York, NY

1994
Mark Masyga
Metaplay, Czech Center, New York, NY

1995
Ho L. Tam
Friends of My Youth: Ho Tam, Commonwealth & Council, Los Angeles, CA

Juana Valdes
Women at the Edge of an Island, Aluna Art Foundation, Miami, FL; *17th International Cultural Exchange*, Diaspora Vibe Cultural Arts Incubator; *The Thomas Hunter Project Space*, Hunter College, New York, NY; *SENSEI Exchange Series—Part 008: In The Fold*, The Cellar of Little Fox Café, New York, NY

1996
Michele Brody
Cheng Long Wetlands International Environmental Art Project, Cheng Long, Taiwan; *Harlem Roots*, Casa Frela Gallery, Harlem, NY; *Five O'Clock Tea Reflections*, University Settlement; *Reflections in Tea*, Andrew Freedman Home, Bronx, NY; *THAW*, Dorsky Gallery, Long Island City, NY

Jennie C. Jones
Black in the Abstract, Contemporary Art Museum Houston, TX; *Roughneck Constructivist*, Institute for Contemporary Art, Philadelphia, PA; *TONE*, Sikkema, Jenkins & Co., New York, NY

Yoshiko Kanai
Accessart, Table Rasa Gallery, Brooklyn, NY; *Nation II at the Alamo*, Sideshow Gallery, Brooklyn, NY; *Online Flat Files*, Pierogi Gallery, Brooklyn, NY

For Whom It



Ridley Howard (A '00), *Pink Portrait, White Frames* (2014), oil on linen, 16 x18 in

Stands, Reginald F. Lewis Museum, Baltimore, MD; *Stocked: Contemporary Art from the Grocery Aisles*, University of Wyoming Art Museum, Laramie, WY

Deborah A. Grant
Present Tense Future Perfect, Carol Jazzar Contemporary Art, Miami, FL; *Christ You Know It Ain't Easy!!*, The Drawing Center, New York, NY

Jennie C. Jones
Black in the Abstract, Contemporary Art Museum Houston, TX; *Roughneck Constructivist*, Institute for Contemporary Art, Philadelphia, PA; *TONE*, Sikkema, Jenkins & Co., New York, NY

Yoshiko Kanai
Accessart, Table Rasa Gallery, Brooklyn, NY; *Nation II at the Alamo*, Sideshow Gallery, Brooklyn, NY; *Online Flat Files*, Pierogi Gallery, Brooklyn, NY

For Whom It

Scott Ogden
Satellite Show, RePopRoom, New York, NY

Megan Walch
Overseas Studio Tokyo, Takadanobaba, Tokyo, Japan; *The Skullbone Experiment*, touring Australia; *Tokyo Studio*, Australia Council for the Arts, Tokyo, Japan

Connie Walsh
Interior Facade, Zing Magazine, New York, NY

1997
Nicole Awai
American Beauty, Susan Inglett Gallery, New York, NY

Sarah Bedford
The Last Brucennial, 837 Washington Street, New York, NY

Heather Carson
In Direct Light, Nan Rae Gallery, Woodbury University, Burbank, CA; *Size Really Does Matter*, Los Angeles Municipal Art Gallery, Los Angeles, CA

Brett Cook
Reflections of Healing, Oakland Museum of California, Oakland CA; *Life is Living—ROH Wellness Clinic*, Defremery/Little Bobby Hutton Park, CA; *Room for Big Ideas: BAN7 Clinic IV—Socially Engaged Education: Making Learning Visible*, Yerba Buena Center for the Arts, San Francisco, CA

Toni Jo Coppa
Make Believe, The Darkroom Gallery, Essex Junction, VT; *A Divergent Collective: Campbell, Coppa & Nadal*, The University of Maine at Augusta, ME; *The Danforth Gallery*, Augusta, ME; *Free For All 4*, Space Gallery, Portland, ME; *Wish You Were Here 13*, A.I.R. Gallery, Brooklyn, NY; *Something Rotten Installation*, Denmark Dump, Denmark Art Center

Heather Cox
Paper-Made, Jamestown Art Center, Jamestown, RI



Wes Miller (A '02) moderates a discussion between **Elijah Burgher** and **Dave McKenzie**

CONVERSATION #6: ELIJAH BURGHER & DAVE MCKENZIE

MARCH 7, 2014

THE DRAWING CENTER, NEW YORK, NY

Art is a mouth-process that speaks a language-material. Dave McKenzie (A '00, F '11) and Elijah Burgher (A '11) utilize their own likenesses and bodies to speak to the power of the interior/ exterior creation of identity and agency. Through sculpture and performance, McKenzie asks us to examine the relationship of the private and public persona to contemporary culture and our sense of self. Burgher binds the act and performance of drawing to the embodiment of desire and the powerful potential of interpersonal connection. For both McKenzie and Burgher, language (written and spoken), ritual (magical and mundane), and the self (corpus, mentis, and animae) are intrinsically selfsame. Dave McKenzie and Elijah Burgher met at Skowhegan in 2011 and reunited at the 2014 Whitney Biennial.

Marjan Laaper
Winterlicht 2013, Schiedam, the Netherlands; *Exhibition Rolling Snowball 4*, Quanzhou, China; *Ah wat lief*, Concordia, Enschede, the Netherlands; *Motel Mozaïque*, Rotterdam, the Netherlands; *Rolling Snowball 5*, Iceland

Stephanie Syjuco
Bucharest Biennial 6, Bucharest, Romania; *Alien She*, Vox Populi, Philadelphia, PA; Yerba Buena Center for the Arts, San Francisco, CA; Orange County Museum of Art, Newport Beach, CA; Feldman Gallery, Pacific Northwest College of Art, Portland, OR

1998
JD Beltran
Electronic Pacific, Fei Contemporary Art Center, Shanghai, China; *Mind Matters: Mapping the Human Mind*, Sandler Neuroscience Center, University of California, San Francisco, CA; *Making ___ that Matters*, Oliver Gallery, California College of the Arts, Oakland, CA

Sanford Biggers
Vex, Baldwin Gallery, Aspen, CO; *3 Dollars & 6 Dimes*, David Castillo Gallery, Miami, FL; *The Shadows Took Shape*, Studio Museum in Harlem, New York, NY; *The Floating World*, LeRoy Neiman Gallery, Columbia University, NY; *Moon Medicin*, Lincoln Center, New York, NY; *Georgia Tech First Center for the Arts*, Atlanta, GA / *Apollo Theater*, New York, NY

Hiroyuki Hamada
Hiroyuki Hamada, Bookstein Fine Art, New, York, NY

Alicia Paz
Garden of Follies, Galerie Dukan, Paris, France / Leipzig, Germany; *MEX PRO Mexico Art Project*, Castello di Miramare, Trieste, Italy

John Parot
Endless Stare, Ship in the Woods, Del Mar, CA; *Love is In the Air*, 2A Gallery, Los Angeles, CA; *Out of Site*, *Out of Mind*, Machine Project, Los Angeles, CA

Christopher Sollars
Water Shed for Off Shore, Southern Exposure, San Francisco, CA; *The Swimmer*, Steven Wolf Fine Arts, San Francisco, CA; *Karla's Living Room*, The Battery, San Francisco, CA

1999
Brian Alfred
BLACK/WHITE, Lamontagne Gallery, Boston, MA

Jeff Hargrave
Jeffrey Hargrave: 14-year Survey, Contemporary Art and Editions, Millburn, NJ; *The Boat I Escaped In As A Child*, Bronx Museum of the Arts, NY; *Artstamp. Dk*, Corridor Galleri, An Artstamp, Denmark; *Solo Exhibition*, MoCA, Tuscon, AZ

Desiree Holman
Sophont, Philip J. Steele Gallery, Rocky Mountain College of Art & Design, Denver, CO; *The Vastness is Bearable*, Museum of Contemporary Art, Santa Barbara, CA; *Sophont in Action*, di Rosa Museum and Collection, Napa, CA; *Way out West*, Art City Project, San Francisco, CA

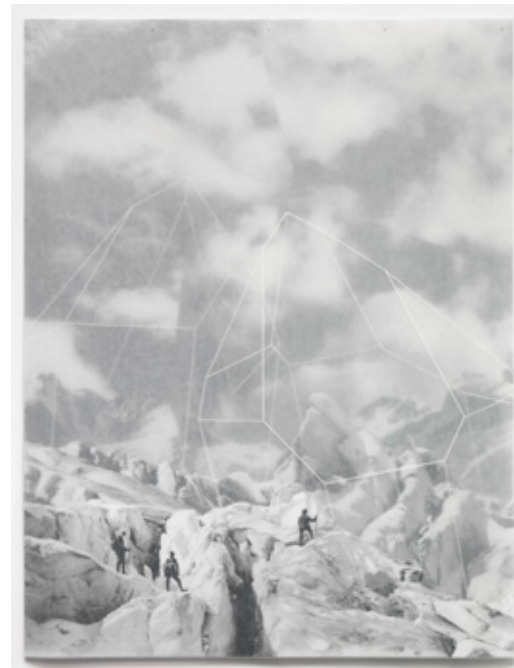
Andrew Johnson
Ossuary, University of Tennessee Downtown Gallery, Knoxville, TN; *Suspension/Descension*, MIA at Outpost for Contemporary Art, Pasadena, CA; *Out of Rubble*, Schmucker Gallery, Gettysburg College, PA / Jack Olson Gallery, Northern Illinois University, DeKalb, IL

Ellen Lesperance
Thread Lines, The Drawing Center, New York, NY; *You & I Are Earth*, Adams & Ollman Gallery, Portland, OR

Joan Linder
Love Canal, Fiendish Plots, Lincoln, NE; *Drawings*, Omi International Arts Center, Ghent, NY

Jean Shin
Jean Shin: HOST, Montclair Art Museum, NJ; *Cabinets of Wonder: The Art of Collecting*, Children's Museum of the Arts, New York, NY; *Shades of Time: An exhibition from the Archive of the Korean-American Artists*, Queens Museum, NY; *Conversations*, Morgan Lehman Gallery, New York, NY

Mary Temple
North Wall, *West Light*, Blanton Museum of Art, The University of Texas at Austin, TX; *Half-Round*, Bethel University, Saint Paul, MN; *Stationary Realms*, University of Arkansas, Fayetteville, AK; *Visual Deception II: Into the Future*, Hyogo Prefectural Museum of Art, Japan; *Inaugural Exhibition*, New York University, Abu Dhabi (NYUAD), Saadiyat Island; *True Enough*, Mixed Greens, New York, NY



Ulrike Heydenreich (A '01), *Neuland* (2013), collage, 85 x 65 cm

Julia Randall
Sticky, Real Art Ways, Hartford CT; *Oral Fixations*, Davison Art Center, Wesleyan University / Handwerker Gallery, Ithaca College, NY

Jon Rappleye
Art on Paper 2014: The 43rd Exhibition, Weatherspoon Art Museum, Greensboro, NC; *In Tangled Splendor*, Visual Arts Center of New Jersey, Summit, NJ; *Hooray for Hollywood*, Mixed Greens Gallery, New York, NY

2000
Sarah Brenneman
Roots Drawing Connections Through Community, inFUSION Gallery, Memorial Sloan Kettering, Brooklyn, NY; *Special Guests*, SARDINE, Brooklyn, NY; *Boston Drawing Project*, Carroll and Sons, Boston, MA

Anthony Campuzano
NADA Miami Beach 2013, Churner and Churner, New York, NY; *Kiki Bouba*, Sarah Lawrence College, Bronxville, NY; *Life Drawing Studio*, ICA Philadelphia, UPenn, Philadelphia, PA; *NADA NYC 2014*, Adams and Ollman

Megan Cump
One Minute Film Festival, MASS MoCA, North Adams, MA; *Wrap Around 4*, ARENA@ suite806, New York, NY

Stephanie Diamond
Spectators (with Tamara Vanderwal), MoMA Studio, Museum of Modern Art, New York, NY

Angelina Gualdoni
Held In Place, *Light in Hand*, Asya Geisberg Gallery, New York, NY

Carrie Gundersdorf
Ghost Nature, Gallery 400, UIC, Chicago, IL; *Le fantôme de la nature*, La Box, Bourges, France; *Blurring the Line*, works from the collection of Lenore Pereira and Rich Niles, Mills College Art Museum, San Francisco, CA; *Observer Effect*, Gallery 400, UIC, Chicago, IL

Ridley Howard
Blues, Legs, Pools, Andréhn-Schiptjenko Gallery, Stockholm; *Art Basel, Hong Kong*, Andréhn-Schiptjenko Gallery, Stockholm; Koenig and Clinton Gallery, New York, NY

Paul Ramirez Jonas
Under the Same Sun: Art from Latin America Today, Guggenheim Museum, New York, NY

John O'Connor
Classless Society, Tang Museum, Saratoga Springs, NY; *Solo Exhibition*, Pierogi Gallery, Brooklyn, NY; *The Machine and the Ghost*, Pierogi Gallery,

Brooklyn, NY; *Classless Society*, Tang Museum, Saratoga Springs, NY

Melissa Oresky
System Preferences, SCA Contemporary, Albuquerque, NM

Amy Pryor
The Time Has Come, Longwood Art Gallery, Bronx, NY; *Value Systems*, New Haven Museum, CT; *Magnificent: Artists Use Maps*, Bronx River Arts Center, Bronx, NY; *Value Systems*, New Haven Museum, New Haven, CT; *I Want Love*, Rox Gallery, New York, NY

Sigrid Sandström
Duckrabbitt, Anat Ebgi, Los Angeles, CA; *New Dimensions*, Galleri Andersson & Sandström, Stockholm, Sweden; *Thinking Through Painting*, The Royal Academy of Fine Arts, Stockholm, Sweden

Edra Soto
HEAD, Western Exhibitions, Chicago, IL; *Excess of Joy*, Seerveld Gallery, Chicago, IL; *Your Blue Line*, commission for Chicago Transit Authority; *Caps for Sale*, The Bike Room, Chicago, IL; *Front & Center*, Hyde Park Art Center, Chicago, IL

2001
Sophia Ainslie
in person, Kingston Gallery, Boston, MA; *Interstitial*, Carol Schlosberg Gallery,

Montserrat College of Art, Beverly, MA; *A Woman's Arms*, Lincoln Arts Projects, Waltham, MA; *On the Wall*, Gallery Naga, Boston, MA

Betsy Alwin
Art Park, 340 W. Broadway, New York, NY; *Among Your Moments: New Work By Betsy Alwin*, No Globe Exhibition Space, Brooklyn, NY

James Davis
Project Room, Now Contemporary Art, Miami, FL

Amy Finkbeiner
"Believe Me," Performance, *__SacRED__sensoRE@L*, presented by VVILD TORVS, Bizarre, Brooklyn, NY; *A "Womanhouse" or a Roaming House? 'A Room of One's Own' Today*, A.I.R. Gallery, Brooklyn, NY; *Crowd*, Green Door Magazine HQ, NY

Ulrike Heydenreich
Lass Dich von der Natur anwehen, Kunsthalle Bremen, Germany; *Neuland*, Galerie van der Mieden, Brussels, Belgium; *Zimmer mit Aussicht*, Kunst im Schloss Untergröningen, Germany; *Lass Dich von der Natur anwehen*, Städtische Galerie Bietigheim-Bissingen, Germany

Sharon Paz
Paralyzed Movement, Musrara Mix14, Jerusalem, Israel; *Personal Territories*, OKK/raum29, Berlin, Germany; *RESTRAINING MOTION*,

Verein zur Förderung von Kunst und Kultur am Rosa-Luxemburg-Platz e.V., Berlin, Germany; *NO WALLS*, Bernauer Straße, U8, Berlin, Germany

2002
William Cordova
untitled, Sikkema Jenkins & Co., New York, NY; *The Shadows Took Shape*, Studio Museum in Harlem, New York, NY; *the past is more infinite than the future*, Miami Dade College North Campus Gallery, Miami, FL; *MIA_BER*, Berlin Arts Club, Germany

Nils Karsten
The Age Of Collage #1, Gestalten Space, Berlin, Germany; *Come Together: Surviving Sandy, Year 1*, Industry City, Brooklyn, NY; *Inclubarte*, Museo Valenciano de la Ilustración y la Modernidad, Valencia, Spain; *The Age Of Collage #2*, Feinkunst Krüger, Hamburg, Germany; *Come Together: Surviving Sandy*, Dedalus Foundation, Brooklyn, NY

Steve Locke
COME LIKE SHADOWS: Palimpsests, Traces, Specters of The Silver Screen, Nightlife, Veils, The Absent Present, ZÄ_rcher Studio, New York, NY; *Gay*, Longwood Art Gallery at Hostos, Bronx, NY; *there is no one left to blame*, Museum of Contemporary Art Detroit, Detroit, MI



Scott Ogden (A '96), *Untitled* (2013), ink and tea on paper, 14 x 10 inches

Melissa Meyer
Recent Work, Lennon, Weinberg, Inc., New York, NY; *Hooray for Hollywood!*, Pavel Zoubok Gallery, New York, NY

Wanda Raimundi-Ortiz
PorcelaReina #1, Harvey B. Gantt Center for African American Art and Culture, Charlotte, NC; *PorcelaReina #2*, Museum of Contemporary Art of North Miami, FL; *GuerrillaReina #1*, Harvey B. Gantt Center for African American Art and Culture, Charlotte, NC; *GuerrillaReina #1*, Sixth Street Containter Gallery, Miami, FL

Rachel Schuder
Sol Sistere, Temp Art Space, New York, NY

Aaron T. Stephan
Second-Hand Utopias, Decordova Sculpture Park and Museum, Lincoln, MA; *To Borrow, Cut, Copy and Steal*, Portland Museum of Art, ME

Katherine Taylor
2013 Earth Moves: Shifts in Ceramic Art and Design National Exhibition, Arvada Center for the Arts and Humanities, CO

2003
Noah Klarsfeld
See Change, The Los Angeles International Airport (LAX), CA; *Four Corners*, The Boston Society of Architects, Boston, MA; *Rouge*, Cheryl Hazan Gallery; *The Miami Project Art Fair*, Freight + Volume Gallery, Miami, FL; *DUMBO Glow*, Brooklyn Bridge Anchorage, Brooklyn, NY

Jose Lerma
Jose Lerma/Chicago Works, Museum of Contemporary Art, Chicago, IL; *La Bella Crisis*, Museum of Contemporary Art, Detroit, MI; *Jose Lerma*, Andrea Rosen Gallery, New York, NY; *Pangaea: New Art from Africa and Latin America*, Saatchi Gallery, London, UK

Gabriel Martinez
ICA@50: Pleasing Artists and Publics Since 1963, Institute of Contemporary Art, Philadelphia, PA; *Sweetest Taboo*, Red Arrow Contemporary; *Capitulo II*, Centro Estatal de las Artes, Tecate, México

Michael Scoggins
*Art Star**, Guest Spot, The Reinstitute, Baltimore, MD; *Forest For My Trees*, Diana Lowenstein Gallery, Miami, FL; *A Day in the Life: The Diane Marek Visiting Artist Series*, Cress Gallery, Chattanooga, TN

Shinique Smith
Shinique Smith: Bright Matter, Museum of Fine Arts, Boston, MA; *Shinique Smith Mural*, Rose F. Kennedy Greenway, Boston, MA; *Arcadian Clusters*, Eli and Edythe Broad Art Museum, Lansing, MI; *Mother Hale's Garden*, Mother Clara Hale Bus Depot (commissioned by MTA, Arts for Transit), New York, NY

Hong Zhang
Currents: Flow, Fall, Calm, Curl, Galerie Steph, Singapore, Hong Chun; *Ink and Body*, Ink Studio, Beijing

2004
Amelia Biewald
Big Brass Light Opera, Magnan Metz Gallery, New York, NY; *Seeing The Sky*, The Wassaic Project, NY

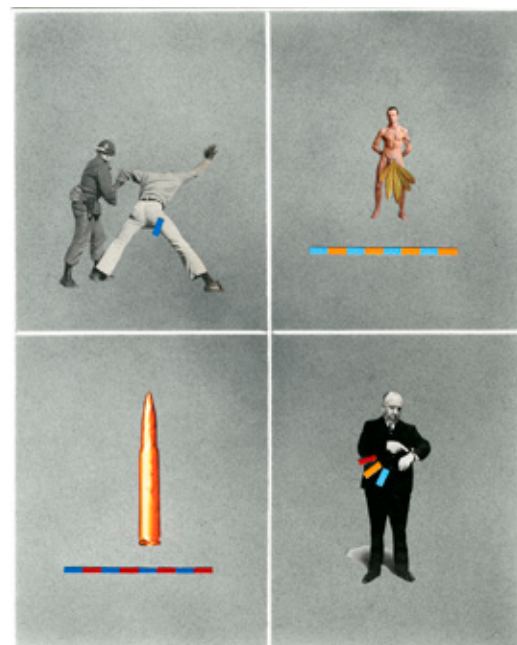
Thomas Burke
Art for Art's Sake, Frederick R. Weisman Museum of Art, Pepperdine University, Malibu, CA / Marjorie Barrick Museum, University of Nevada, Las Vegas, NV; *NOW-ism: Abstraction Today!*, Pizzuti Collection, Columbus, OH

Bill Cravis
Escalator Man, Franklin Crossing, Bend, OR

Dave Hardy
The Hairy Hand, Churner and Churner, New York, NY; *Town and Country*, John Davis Gallery, Hudson, NY; *A Chromatic Loss*, Bortolami, New York, NY

Gwenessa Lam
Mongrel Histories, Republic Gallery, Vancouver, BC, Canada; *Edge State*, Centre des arts actuels Skol, Montréal, Canada

Shaun Leonardo
One-on-Ones, Harvard University, Cambridge, MA; *Radical Presence*, Grey Art Gallery, New York University, NY / The Studio Museum in Harlem, NY; *Crossing Brooklyn*, Brooklyn Museum, NY; *The Performance Will Not Be Televised, but the Audience Will Be Recorded*, SVA Theater, New York, NY



Nils Karsten (A '02), *Measurements* (2014), graphite and collage on paper, 11 x 14 in

Donald Moffett
NYC Makers: The MAD Biennial, Museum of Arts and Design, New York, NY; *Come Together: Surviving Sandy, Year 1*, Industry City, Brooklyn, NY; *Unbound: Contemporary Art After Frida Kahlo*, Museum of Contemporary Art, Chicago, IL

Christopher Patch
Soundings for Fathoms, Parallel Art Space, Riddgewood, NY; *SEA HAG!*, Evans Contemporary, Peterborough, Ontario, Canada

Alix Pearlstein
Monogram, Samson, Boston, MA; *The Park*, DeCordova Museum, Lincoln, MA; *Video Container: Touch Cinema*, MoCA North Miami, FL; *Enacting Acting*, INOVA Milwaukee, WI

David Politzer
HDL: Hyper Democratic Landscapes, Artspace, New Haven, CT; *New Growth*, Albright College, Reading, PA

Daniel Rich
Systematic Anarchy, Peter Blum Gallery, New York, NY

Saya Woolfalk
Post-Humanist Desire, MOCA Taipei, Taiwan; *ChimaTek™: Hybridity Visualization Mandala*, Asian Art Museum, San Francisco,

CA; *The Shadows Took Shape*, Studio Museum in Harlem, New York, NY; *Expo Chicago: Leslie Tonkonow Artworks + Projects*, Navy Pier, Chicago, IL; *ChimaTEK Beta Launch*, Smack Mellon Gallery, Brooklyn, NY

2005
Yashua Klos
Why Draw Now?, Carnegie Mellon University Symposium, Pittsburg, PA

Rachel Frank
Breathless, Rush Arts Gallery, New York, NY

Heather Hart
The Intuitionists, The Drawing Center, New York, NY; *Crossing Brooklyn*, The Brooklyn Museum, NY; *untitled*, Kickstarter Gallery, Brooklyn, NY; *ACTION + OBJECT + EXCHANGE*, The Drawing Center, New York, NY; *Material Memory*, Aferro Gallery, Newark NJ; *Through the Parlour*, No Longer Empty, NY; *Oracular Rooftops*, Cornish Alumni Gallery, Seattle, WA

Saskia Jorda
Hotshots, High Desert Test Sites, Crown King, AZ

McKendree Key
Crossing Brooklyn, The Brooklyn Museum, Brooklyn NY; *Groundswell*, Olana State Historic Site, Hudson, NY

Elena Bajo
If I can't dance to it, it's not my revolution, Cantor Fitzgerald Gallery Haverford College, PA; *Vers une Hypothese*, XII Lyon Biennial For Du Bruissin CAC Francheville, Lyon, France; *Original Doubt*, Plataforma Revolver, Lisbon; *Elena Bajo: With Entheogenic Intent (Burn the Witch)*, 18th Street Arts Center, Los Angeles, CA; *Elena Bajo | An Arbitrary Issue*, Garcia Galeria, Madrid, Spain; *Retroalimentacion*, Sala Arte Joven Comunidad Madrid, Spain; *The Absence of Work*, D+T Project Gallery, Brussels, Belgium

2006
Julia Brown
Subterfuge, The Gallery Apart, Rome, Italy; *The Neighbors*, American University Katzen Center, Washington, DC; *Moving, Not Moving*, McKinney Avenue Contemporary, Dallas, TX

Victoria Fu
2014 Whitney Biennial, Whitney Museum of American Art, New York, NY; *Cult of Splendor*, UC Irvine University Art Gallery, CA; *Belle Captive*, Document Space, Chicago, IL; *Belle Captive*, Simon Preston Gallery, New York, NY; *Cult of Splendor*, University Art Gallery, UC Irvine, CA; *Crossbar Radical-Tick Scoop Star*, Document, Chicago, IL; *Eric's Trip*, Lisa Cooley Gallery, New York, NY

Ben Kinsley
Actualize, Ortega y Gasset Projects, Queens, NY; *Mapping Spaces: Networks of Knowledge in 17th Century Landscape Painting*, ZKM | Museum of Contemporary Art; *Memoria abierta: La Galeria de Comercio*, Casa del Lago, Mexico City, Mexico; *2014 Pittsburgh Biennial*, Miller Gallery, Pittsburgh, PA

Gabriel Martinez
MA Vizyoli/Ronnie Yates, Alabama Song, Houston, TX; *Feast: Radical Hospitality in Contemporary Art*, Blaffer Art Museum, Houston, TX

Monica Martinez
Home ECONomics: Communal Housekeeping for the 21st Century, Wignall Museum of Contemporary Art, CA

Emily Mast
Made in L.A., Hammer Museum, Los Angeles, CA; *The Least Important Things*, LACMA, Los Angeles, CA; *ENDE (Like a New Beginning)*, Night Gallery, Los Angeles, CA

Kambui Olujimi
Mnemonikos, Jim Thompson Art Center, Bangkok, Thailand; *A Life in Pictures*, MIT List Visual Arts Center, Boston, MA; *Crossing Brooklyn*, Brooklyn Museum of Art, NY

Daniela Rivera
Shooting Skies, LaMontagne Gallery, Boston, MA

Jose Sariñana
L.A. Heat, Chinese American Museum, Los Angeles, CA

Adam Shecter
New Year, Eleven Rivington, Long Island City, NY

Molly Springfield
Drawing Time, Reading Time, The Drawing Center, New York, NY; *Positions*, Galerie Thomas Zander, Cologne, Germany; *LISTS*, Gallery 308, Minneapolis, MN; *Art=Text=Art*, UB Anderson Gallery, University at Buffalo, NY

Mark Taber
Metaphor And Art, Online; *Come Together: Surviving Sandy, Year 1*, Industry City, Brooklyn, NY; *Homeostasis Lab Pavilion*, The Wrong New Digital Art Biennale

2007
Ei Anatsui
Broken Bridge II, The High Line, New York, NY; *Ala*, Earth Matters, Smithsonian National Museum of African Art, Washington DC; *Gravity and Grace*, Des Moines Art Center, IA; *Gravity and Grace*, Bass Museum, Miami Beach, FL; *New Worlds*, Mt. Holyoke College Art Museum, MA; *Theory Of Se*, Axel Vervoordt Gallery, Hong Kong, China; *Exhibition of New Works*, Jack Shainman Gallery, New York, NY / Mnuchin Galleries, New York, NY

VIDEO SCREENING

A bi-coastal video screening organized by the Skowhegan Alliance Video Committee, showing once at Cabinet in Brooklyn, NY, and again at Public Fiction in Los Angeles, CA.



Still from *A Woman Runs* by Lilly McElroy (A '06)

THIS MIGHT NOT BE FOR NOW

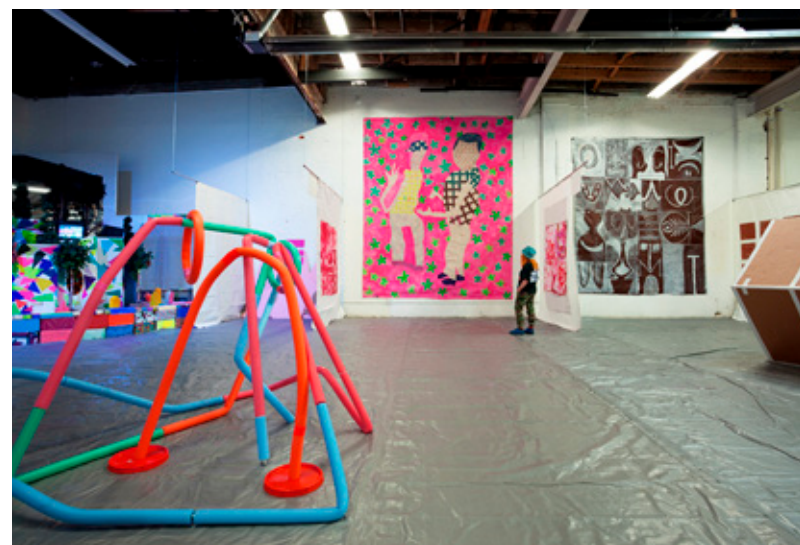
MAY 8, 2014 & MAY 15, 2014

This might not be for now: the noncommittal relationship or fleeting romance, the shifting cultural media, the liaison with the passing story or style. One song seems to waft out of every bodega, drug store, and car stereo in the city for two short months encapsulating the idea of one brief summer. Politicians and the news machine fluctuate, jumping from one topic to another making promises, plying us with what is currently most important. Our collective consciousness feels, for an instant, gratification, or is driven to act, to investigate, to demand and then there is an oversaturation, an overstimulation until the next big thing.

This might not be for now is the contemporary myriad of replication and dissemination platforms through which we gain and share information. Our individual memories and cultural ideas of the past, of history, are in flux, unstable and soon to be misremembered, rewritten, edited, amended. There is the often-times rose-tinted nostalgia for the past, dissatisfaction with the present, and the promise or hope of the future.

Including work by:

Elliot Bassman (A '71)	Mores McWreath (A '13)
Bonnie Begusch (A '11)	Christopher Meerdo (A '13)
Sanford Biggers & Jennifer Zackin (A '98)	Rosmarie Padovano (A '10)
Julia Brown (A '06)	David Politzer (A '04)
Matthew Day Jackson (A '02)	Amy Ruhl (A '12)
Art Johnson (A '09)	Christopher Samuels (A '10)
Nicholas Johnston (A '13)	Pascual Sisto (A '11)
Lilly McElroy (A '06)	Rodrigo Valenzuela (A '13)
Tricia McLaughlin (A '92)	Abbey Williams (A '04)



Jose Lerma (A '03), *La Bella Crisis* (2014), trash and other materials obtained in Detroit (detail), dimensions variable



Saya Woolfalk (A '04), *Chimera* (2013), digital video 00:04:12 and mixed media installation, 13 x 18 x 25 ft, MOCA Taipei

SkowheganPERFORMS

SkowheganPERFORMS is an annual day of performance art held in collaboration with Socrates Sculpture Park.



SkowheganPERFORMS 2014

SEPTEMBER 27, 2014
SOCRATES SCULPTURE PARK,
LONG ISLAND CITY, NY

Performing Artists:

Cortney Andrews (A '14)
Anthea Behm (A '14)
Claudia Bitran (A '14)
Carla Edwards (A '04)
Teresa Booth Brown (A '88)
Lex Brown (A '12)
Alex Bradley Cohen (A '14)
Christopher Domenick (A '12)
Rachel Frank (A '05)
Doreen Garner & Aaron Fowler (A '14)
Carl Marin (A '12)
Holly McEntegart (A '14)
Ivan Monforte (A '04)
Julie Ann Nagle (A '10)
Holly Pitre (A '14)
Christopher Samuels (A '10)
SKOTE (A '10)
Binod Shrestha (A '05)
James Robert Southard (A '12)
Jennifer Sullivan (A '11) with Peter LaBier
Kyle Downs, Nick Doyle, Alex Goss,
Sharon Madanes, Irini Miga, Susan
Metrican, & Willie Stewart (A '14)
Marisa Williamson (A '12)
Claire Zitzow (A '11)

Katie Herzog
Altered State Library,
Monte Vista Projects,
Los Angeles, CA

Angela Lorenz
Victorious Secret, Berry
Brickway Gallery, Dartmouth
College, Hanover, NH; *Angela
Lorenz at the SMFA*, School
of the Museum of Fine Arts
Library, Boston, MA; *What
Artists Study*, Steinbach
Gallery, Phillips Academy,
Andover, MA; *Living in These
Bodies*, Clifford Gallery,
Waterfall Arts, Belfast, ME

Katherine Mangiardi
*Katherine Mangiardi:
Paintings*, The Butler
Institute of American
Art, Youngstown, OH

Linda Molenaar
The Bumbus, Forest Art Art
Biotope, Darmstadt, Germany

Meredith Nickie
Primitive Accumulation,
Franconia Sculpture
Park, Shafer, MN; *Lodge
in Your Throat*, AXENEO7,
Gatineau, Québec, Canada

Cauleen Smith
Dallas Biennial, The
MacKinney Art Contemporary,
Dallas, TX; *Timing Is
Everything*, UCSD University
Art Gallery, San Diego, CA;
The Shadows Took Shape,
Studio Museum in Harlem,
New York, NY; *The Shadows
Took Shape*, Studio Museum
in Harlem, New York, NY

2008
Otis Bardwell
You Can't Go Back, Saranac
Art Projects, Spokane, WA

Avantika Bawa
Aqua Mapping, Saltworks
Gallery, Atlanta, GA; *Flood.
Control*, Schneider Museum
of Art; Ashland, OR; *Mapping
Kochi*, Pepper House,
Kochi, India; *Ruptures in
Arrival: Art in the Wake of
the Komagata Maru*, Surrey
Art Gallery, Vancouver, BC

Suzanne Broughel
The Wayland Rudd Collection,
First Floor Gallery, Harare,
Zimbabwe / Winkleman
Gallery, New York, NY

Asuka Goto
Echo, Globe Gallery,
Newcastle upon
Tyne, England

Lydia Greer
Internal Cinema, Mamuta
Art & Media Center,
Jerusalem, Israel; *Shades
of Impact*, Worth Ryder
Gallery at University of
California, Berkeley, CA;
*Facing West: A Shadow
Theatre Opera*, Gallery Route
One, Point Reyes, CA

John Houck
Fixed Variable, Hauser & Wirth,
New York, NY; *Murmurs:
Recent Contemporary
Acquisitions*, Los Angeles
County Museum of Art, Los
Angeles, CA; *Eternal Om*,
Metro PCS, Los Angeles, CA

Monika Sziladi
*Monika Sziladi: Wide
Receivers & Tight Ends*,
Smack Mellon, Brooklyn,
NY; *Emerging Artists in
Public Collections*, Wall
Space; *Aimee Burg*, *Tamar
Ettun*, *Monika Sziladi*, Bosi
Contemporary, New York, NY;

*Suddenly, There: Discovery
of the Find*, Garis & Hahn
Gallery, New York, NY

Jonathan VanDyke
Oltre l'oblio, 1/9unosunove
galeria, Rome, Italy; *Traunitz*,
Loock Galerie; *Krise og en
Krise i en Skuespillerindes
Liv*, Four Boxes Gallery,
Skive, Denmark; *Cordoned
Area 4 (Fire Island)*, Fire
Island Pines Performance
Art Series, Fire Island, NY

2009
Lauren Adams
Ornament and Crime, Ortega
& Gasset Projects, Queens,
NY; *Animalia Agitatus*,
Clarion University, Clarion;
Clark Hulings Fund, New
York, NY; *BiPolar*, School
33, Baltimore, MD; *The
Neighbors*, Katzen Museum
at American University,
Washington; *Make Things
(Happen)*, Nathan Cummings
Foundation; *Rotating
History Project*, Clermont
Foundation, Berryville, VA

Keren Benbenisty
*Holding Water, Beyond Paper:
TRACES—The 5th Drawing
Biennale*, Jerusalem, Israel

Ashley Blalock
Keeping Up Appearances,
Small Works Gallery, Nevada
Museum of Art, Reno, NV

Nayari Castillo
Passing Imaginaries, CIFO Art
Space, Miami, FL; *The artist
are present*, Rotor Gallery,
Graz, Austria; *ContraPaisaje*,
El Anexo Contemporáneo,
Caracas, Venezuela;



Jessica Kain (A '12), *Marpha Village*, home of Marpha Foundation for Community + the Arts

Postcards from Sarajevo,
Evergreen Gallery, Sarajevo,
Bosnia and Herzegovina

Caleb Charland
*From the Basement to the
Backyard*, Center for Maine
Contemporary Art, Rockport,
ME; *Piece Work*, Portland
Museum of Art, Portland, ME

Amy Feldman
Stark Types, Annaelle Gallery,
Stockholm, Sweden; *Gray
Area*, Sorry We're Closed,
Brussels, Belgium; *The
New York Moment*, Musée
d'art Moderne Saint-Étienne,
France; *Perfume*, Jan
Kaps, Cologne, Germany /
Blackston Gallery, New York,
NY; *Brian Belott*, Paul DeMuro,
Amy Feldman, Galerie
Zürcher, Paris, France; *Higher
Learning*, Lehman College,
New York, NY; *Marquee
Moon*, Thierry Goldberg
Gallery, New York, NY

Kyoung Eun Kang
Talking Transition, Duarte
Square, New York, NY;
Delicate Enchantments, The
New York Art Residency &
Studio NARS Foundation,
New York, NY; *Actions &
Intent*: Documentations
in Performance, NARS
Foundation, Brooklyn, NY;
Transcending Borders,
Lawrence Wilson Art Gallery,
The University of Western
Australia, Perth, Australia

Ji Eun Kim
The Construction of Ruins,
Doosan Gallery, New York, NY

Anna Kunz
Verge, Munch Gallery, New
York, NY; *Angular Seduction*,
TSA Gallery, New York, NY;
I Listen To Color, Frank

Juarez Gallery, Sheyboygan,
WI; *The Franklin*, The
Franklin, Chicago, IL

Nyeema Morgan
*Nyeema Morgan & Mike
Cloud: Interrogation Fiction*,
Abrons Art Center, New York,
NY; *Come Together: Surviving
Sandy, Year 1*, Industry City,
Brooklyn, NY; *The Shadows
Took Shape*, Studio Museum
in Harlem, New York, NY; *The
Intuitionists*, The Drawing
Center, New York, NY; *Belewe*,
Kala Art Institute, Berkeley,
CA; *The Shadows Took
Shape*, The Studio Museum
in Harlem, New York, NY

Mie Olise
*Between the Stratum and
the Unstable*, Duve Berlin,
Germany; *Epic Fall 2*, Active
Space, Brooklyn, NY; *Bikuben*,
UMOCA, Salt Lake City, UT

Bundith Phunsombatlert
*Wayfinding: 100 NYC
Public Sculptures*, Flushing
Meadows Corona Park/
Queens Museum, NY

Jaye Rhee
Gravity and Lightness,
DOOSAN Art Center, Seoul,
South Korea; *A Written
Promise of The Lines
(Tentative Title)*, Centro
para os Assuntos da Arte
& Arquitectura (CAAA),
Guimaraes, Portugal

Richard T. Walker
*the predicament of always
(as it is)*, The Contemporary
Austin, TX / Arizona State
University Art Museum, AZ;
Richard T. Walker, James
Cohan Gallery, New York,
NY; *let this be us*, Des
Moines Art Center, IA

2010
**Strauss Bourque-
LaFrance**
Strauss Bourque-LaFrance,
Caitlin Keogh, Pam Lins,
Sean Raspet, Rachel Uffner
Gallery, New York, NY

Tim Campbell
Seeing the Sky, The
Maxon Mills, Wassauc, NY;
Exhibition, Outlet Gallery,
Brooklyn, NY; *Flatfile Program*,
Artspace, New Haven, CT

Lauren Cohen
*Bloomberg New
Contemporaries*, Institute
of Contemporary
Art, London, UK

Sara Eliassen
A Blank Slate, International
Film Festival Rotterdam,
The Netherlands

Sarah Hotchkiss
*Folding the Blanket of
Time*, Park Life Gallery,
San Francisco, CA

David Leggett
Recess, The South Side
Community Art Center,
Chicago, IL; *Poems in a room*,
Magic Pictures, Philadelphia,
PA; *Going to bed angry*, 65
Grand Gallery, Chicago, IL

Marisa Mandler
Covered, NK Galerie, Antwerp,
Belgium; *Art Park*, ArtPod,
NY; *LA Woman*, Yesterday,
Today, Tomorrow, Forest
Lawn Museum, Glendale, CA;
WetLand, Penn's Landing,
Philadelphia, PA; *Crossing
Brooklyn*, The Brooklyn
Museum, NY; *Flock House
Project Omaha: A citywide
workshop*, Bemis Center for

**Theodoros
Zafeiropoulos**
Quest of Query, The Menace
of the Obvious, tranzit.hu,
Budapest, Hungary; *Quest of
Query, Scrolling Topographies*,
Deák Erika Gallery, Budapest,
Hungary; *Please Participate
Me*, Photobiennale "Logos"
VIII, Museum of Photography,
Thessaloniki, Greece



Richard Walker (A '09), *Outside of All Things* (2013), two-channel HD video 00:07:51 / Courtesy the artist and Carrol/Fletcher London

Contemporary Arts, Omaha,
NE; *Common Spaces*, The
Kitchen, New York, NY

Mary Mattingly
On Land, Flanders Gallery,
Raleigh, NC; *Come Together:
Surviving Sandy, Year 1*,
Industry City, Brooklyn, NY;
*Mary Mattingly: Omaha
Flock House Project*, Bemis
Center for Contemporary
Arts, Omaha, NE

Cullen Washington Jr.
Abstract America Today,
Saatchi Gallery, London, UK

Scott Patrick Wiener
*All Our Tomorrows and
Yesterdays*, Proof Gallery,
Boston, MA; *Panoptic
Measures*, The Elizabeth
Foundation for the Arts,
New York, NY; *Distant
Images, Local Positions*,
Elizabeth Foundation for
the Arts, New York, NY;
Brink v1, Boston Center
for the Arts, Boston, MA

Matthew Wilson
*Whitney Independent Study
Program Studio Exhibition*,
TEMP Art Space, New York,
NY; *In Response: Other
Primary Structures*, The
Jewish Museum of New
York, NY; *Correspondance*,
PS Hudson, Catskill, NY;
Frames per second, Flanders
Gallery, Raleigh, NC

2011
Matt Ager
Duck Rabbit, Anat Ebgi, Los
Angeles, CA; *Camel Blues*,
Kinman Gallery, London,
UK; *Wearing Potentiality*,
Paradise Row Gallery,
London, UK; *Chromatic Leak*,
NAM Project, Milan, Italy

Samantha Bittman
New Tenets, Paris London Hong Kong, Chicago, IL; *Soft Counting*, Greenpoint Terminal Gallery, Brooklyn, NY; *Conversations*, Morgan Lehman Gallery, New York, NY; *1234*, Andrew Rafacz Gallery, Chicago, IL

Amy Brener
Destiny's Fleshies, Knowmoregames, Brooklyn, NY; *Articulated Lair's*, Helper, Brooklyn, NY; *Recliners*, The Massie Family Sculpture Courtyard, MacLaren Art Centre, Barrie, Ontario, Canada

Mike Calway-Fagan
SUPERPOSITION: Observing Realities, Trinity Museum, New York, NY; *Canon Fodder*, Hughes Fine Art Center, University of North Dakota, Grand Forks, ND; *The limit is the sun*, Murray State University, Murray, KY; *Super T*, NURTUREart, Brooklyn, NY

Ivonne Dippmann
Les modes personnelles, Tel Aviv, Israel

Jonathan Duff
Live Amateurs, MINT Gallery, Atlanta, GA; *Jon Duff Solo Exhibition*, MINT Gallery, Atlanta, GA; *Best In Show*, MINT Gallery, Atlanta, GA; *Mind The Gaps*, Sediment Arts, Richmond, VA; *Jon Duff-Lowest Bidder*, Bedford Gallery, Farmville, VA

Catherine Fairbanks
Reds, Charlie James Gallery, Los Angeles, CA

Jacqueline Gordon
It Only Happens All of the Time, Yerba Buena Center for the Arts, San Francisco, CA; *I'm Not Judging You*, *I'm Judging Me*, Pro Arts Gallery, Oakland, CA; *Filter Resonance*, Cult Exhibitions, San Francisco,



Jean Sausele-Knodd (A '83), *Coming and Going* (2013), oil on board, 45 x 57 in

CA; *Everyone Will Be Here Now But Me*, Machine Project, Los Angeles, CA

Clare Grill
Comb, Soloway, Brooklyn, NY

Maya Hayuk
Hammer Projects: Maya Hayuk, The Hammer Museum, Los Angeles, CA; *This Wall Could Be Your Life*, Museum of Contemporary Canadian Art, Toronto, Canada; *Bowery Wall*, Bowery & Houston, New York, NY; *Urban Art Biennale*, Museum of Contemporary Art, Charleroi, Belgium; *Alles Klar*, Die Kunstagentin, Cologne, Germany

Shara Hughes
Guess You Had To Be There, Museum of Contemporary Art GA, Atlanta, GA; *Sculptures and Works on Paper*, Mikael Andersen Gallery, Copenhagen; *Sumped Pumped Sentiments*, TSA New York, Brooklyn, NY; *Other Peoples Paintings*, Torrence Shipman, Brooklyn, NY

Jeremiah Hulsebos-Spofford
Hall of Khan, Hyde Park Art Center, Chicago IL; *Solo Show*; *Bare Bones*, The Franklin, Chicago, IL

Meredith James
Land Lock, Jack Hanley Gallery, New York, NY

Michael Menchaca
Galeria Sin Fronteras, National Museum Of Mexican Art, Chicago, IL; *Estampas De La Raza*, North Carolina Museum of Art, NC; *Reading Room*, RISD Gelman Gallery, Providence, RI; *Estampas De La Raza: Contemporary Prints From the Romo Collection*, North Carolina Museum of Art, Raleigh, NC; *Galeria Sin Fronteras*, National Museum of Mexican Art, Chicago, IL

Gabriela Salazar
This Is Where We Jump: La Biental 2013, El Museo del Barrio, New York, NY; *In Advance of a Storm*, The Lighthouse Works, Fishers Island, NY

Lauren Silva
Lauren Silva Solo Show, ZieherSmith, New York, NY

Luke Stettner
this single monument, The Kitchen, New York, NY; *time, women, stars, death, sleep, flowers, life, eyes, a river, dreams*, Kate Werble Gallery, New York, NY; *Errata*, Vox Populi, Philadelphia, PA; *Printed Matter*, Parallel Events Manifesta 10, Saint Petersburg, Russia

Jennifer Sullivan
Big Girl Paintings, Emma Gray HQ at Five Car Garage, Santa Monica, CA; *Canon Fodder*, Hughes Fine Art Center, University of North Dakota, Grand Forks, ND

Katrina UMBER
Reds, Charlie James Gallery, Los Angeles, CA

Maria Walker
[THERE] Keith J. Varardi & Maria Walker (curated by Gabriel Pionkowski A'12), Hudson D. Walker Gallery, Provincetown, MA; *Off The Wall/Fresco Painting*, Hudson Guild Gallery, New York, NY; *Anneliese Schrenk, Maria Walker, Vol. One*, 308at156 Project Artspace, New York, NY; *Implicit Horizon*, Mixed Greens, New York, NY

Mary Walling Blackburn
My Strangest Stranger, UCSD University Art Gallery, San Diego, CA; *Portfolio*, Bomb Magazine, New York, NY; *Falling to Levitate*, EFA Project Space, New York NY

Asim Waqif
Solo, Galerie Daniel Templon, Paris, France; *Palace of Debris*, Marrakech Biennale, Marrakech, Morocco; *Solo Booth*, FIAC, Paris, France; *Epreuves*, Galerie Daneil Templon, Paris, France; *Control*, Dhaka Art Summit, Dhaka, Bangladesh

Katie Wynne
Avert your gaze and you will lose your love!, Box13 Artspace, Houston, TX; *O Stone Be Not So*, Mass Gallery, Austin, TX; *In All Kinds of Weather: A Good Weather Retrospective*, Gallery Protocol, Gainesville, FL

2012 Christopher Aque
Murmurs, Regards, Chicago, IL; *Canon Fodder*, Hughes Fine Art Center, University



David Politzer (A '04), *HDL: Hyper Democratic Landscapes* (2014), 3-channel video installation with sound, 0:28:00, dimensions variable

of North Dakota, Grand Forks, ND; *White Columns Benefit Exhibition*, White Columns, New York, NY

Felipe Castelblanco Olaya
Wrong Place, Urban Arts Space, Columbus, OH; *We Paint Houses*, Practice Gallery, Philadelphia, PA; *Frame & Frequency*, Sumter Gallery, Sumter, SC; *The Wrong Place*, Urban Arts Space, Columbus, OH; *We Paint Houses*, Practice Gallery; *The Foreigner*, San Diego Museum of Art, CA

Don Edler
Future/Past, REVERSE Gallery, Brooklyn, NY; *Three Painted Objects*, Find and Form Space; *I Like Florescent Light (I Love The Sun)*, 80WSE Gallery, New York, NY; *Maspeth World of Wheels*, Knockdown Center, Maspeth, NY

Ash Ferlito
Canon Fodder, Hughes Fine Art Center, University of North Dakota, Grand Forks, ND; *Time Capsule*

2014–2044, Marjorie Barrick Museum, University of Nevada, Las Vegas, NV

Amy Flaherty
I Want to Smell Your Hair, New Art Center, New Haven, MA

Kevin Frances
The Big Picture Show, International Print Center, New York, NY; *VOX X: Present Tense*, Vox Populi, Philadelphia, PA

Daniel Giles
Open Office: a project of United States Artists, United States Artists Headquarters, Chicago, IL; *Your Implications Have Implications*, SLOW Gallery, Chicago, IL; *Please Stand By*, ACRE TV, Chicago, IL

Chaja Hertog & Nir Nadler
Duo Denken, Zwolle, The Netherlands; *International Film Festival Rotterdam*, The Netherlands; *INVIDEO2013*, International Film Festival, Milano; *Curta Cinema 2013* | *Rio de Janeiro International Short Film Festival*, Brazil

Emre Kocagil
Future Folk, Part II, Launchpad, Brooklyn, NY

Nicolas Mastracchio
Nicolas Mastracchio, Galeria Zavaleta Lab, Buenos Aires, Argentina

Ander Mikalson
Three's Company for Eight Performers, Churner and Churner, New York, NY; *Score for Two Dinosaurs*, Queens Museum, Queens, NY / Art, Design, and Architecture Museum, Santa Barbara, CA; *A Narrow Hollow Volume*, Practice, Philadelphia, PA; *Queens International 2013*, Queens Museum of Art, NY

Shirah Neumann
Small Visions, Museums on the Green, Falmouth, MA; *Summer Salon*, Aucoisco Galleries, Portland, ME; *Portland Show*, Greenhut Gallery, Portland, ME

Gabriel Pionkowski
Context and Counteractions, Hans Hoffman Gallery, Provincetown Art Museum, MA; *Off The Wall/Fresco Painting*, Hudson Guild Gallery, New York, NY; *Regarding the Fold*, Hudson D. Walker Gallery, Provincetown, MA; *Warp and Woof*, The Hole, New York, NY; *Coincidence*, Galerie Hélène Bailly, Paris, France; *Wisconsin Triennial*, Madison Museum of Contemporary Art, Madison, WI

Naomi Safran-Hon
Hard Times: Paintings, SLAG Gallery, Brooklyn, NY

Arlene Shechet
Slip, Sikkema Jenkins & Co., New York, NY

Barb Smith
It is a door and a window that make a room useful, SOIL Gallery, Seattle, WA

Anna So Young Han
Da Capo, OCI Museum, Seoul, Korea

Michael K. Taylor
Optimus primAtive: Research Lab, Community Artists' Collective, Houston, TX

Quynh Vantu
DordtYart Wertt, Dordrecht Museum, The Netherlands; *Thresholds: Quynh Vantu*, McColl Center for Visual Arts, Charlotte, NC; *Norrköping AIR*, Norrköping, Sweden; *Wadden Tide 2014*, Wadden Sea

John Walter
Hangwoman, Schwartz Gallery, London, UK; *Glasshouse*, Smart Consultants, Aberdeen, Scotland; *Lily & Mim*, Smart Consultants, Aberdeen, Scotland; *Turn My Oyster*

Up, Whitstable Biennale, Whitsable, UK; *SPOOLBASE*, Smart Consultants, Aberdeen, Scotland

John Zappas
Figured Spot, Primetime, Brooklyn, NY; *Lag*, Space Gallery, Portland, ME; *In All Kinds of Weather*, Gallery Protocol, Gainesville, FL

Perna Bishnoi
In a Sea of Other Voices (with Namrata Mehta, Sindhu Thirumalaisamy), Stereo sound, 3:19 mins, New Delhi, India; *Composition for Temple Speakers*, Richmond Town, Bangalore, India

John Dombroski
Pyramid Scheme, 204 25th St, Brooklyn, NY; *PS3 ArtPark*, 305 W Broadway, Soho, NY; *Three's Company for Eight Performers*, Churner and Churner, New York, NY

Sarah Hewitt
Congregation, 106 Green, Brooklyn, NY

Christopher Meerdo
#bruteforcefield, The Hills Esthetic Center, Chicago, IL

Fabiola Menchelli Tejada
Fabiola Menchelli, Yauatepec, México City, México; *XVI Photography Bienial México*, Centro de la Imágen, México City, México; *Aggregated Exposures*, George Lawson Gallery, San Fransisco, CA

Stacy Mohammed
Folk, Gallery 263, Cambridge, MA; *Los Milagros*, FBC Gallery, Newton, MA; *The Art Of Drawing*, University of New Hampshire Museum Dimond Library, Durham, NH

Lavar Munroe
Grants Town Trickster, Jack Bell Gallery, London, UK; *Where Heroes Lay*, (E) MERGE Art Fair, Washington, DC; *Cash and Carry*, Good Children Gallery, New Orleans, LA; *And Then: Varied Approaches to Narrative*, Marlboro Gallery, Prince George's Community College Largo, MD

Dona Nelson
Whitney Biennial 2014, Whitney Museum of Art, New York, NY; *Outside the Lines*, CAMH, Houston, TX; *Phigor*, Thomas Erben Gallery, New York, NY; *Making Sense: Rochelle Feinstein, Deborah Grant, Iva Gueorguieva, Dona Nelson*, University of South Florida Contemporary Art Museum, Tampa, FL

Ralph Pugay
Crowdsurfer, Vox Populi, Philadelphia, PA; *Portland Biennial 2014: Disjecta*, Portland, OR

RELAX (chiarenza & hauser & co)
Sinopale 5, Sinop Biennial 2014, Turkey

Sarah Tortora
Whitney Houston Biennial 2, Julius Caesar, Chicago, IL

Leila Tschopp
Movimientos Dominantes, Haroldo Conti Cultural Center, Buenos Aires, Argentina; *Geometría al límite*, Museum of Contemporary Art of Buenos Aires, Buenos Aires, Argentina; *Ensayo General*, Ensayo General, Buenos Aires, Argentina

Lindsay Preston Zappas
Fresh Hot Dogs, Machine Project, Los Angeles, CA; *Thirds*, The Front, New Orleans, LA; *Lake Effect*, Sagatuck Center for the Arts, Sagatuck, MI



John Zappas (A '12), *E E B B E E* (2013), pigmented plaster and carved basswood, 28 x 18 x 4 in / *In All Kinds of Weather*, Gallery Protocol, Gainesville, FL

2013 Jonathan Armistead
On Selfiness, Mote Gallery, Columbus, OH / *The STUDIO* for creative Inquiry CMU, Pittsburgh PA; *Untitled, Solo chair with wiener*, Box13 Art Space, Houston, TX

Julia Bland
Equations of Sight-Similarity, On Stellar Rays, New York, NY; *Come Together: Surviving Sandy, Year 1*, Industry City, Brooklyn, NY; *Hard As You Can, Right At The Middle*, Asya Geisberg Gallery, New York, NY; *Breaking Night*, Vox Populi, Philadelphia, PA

Mores McWreath
Bent In, Primetime, Brooklyn, NY; *Identity Tourist*, The Enemy (online journal); *Goalkeeper*, Bryan Ohno Gallery, Seattle, WA; *VOX X: Present Tense*, VOX Populi, Philadelphia, PA

Grants, Fellowships & Awards



Lauren Adams (A '09), *Precarious Prototypes* (2014), custom printed textiles / Sondheim Finalists Prize at the Walter Museum

A Blade of Grass Fellowship

Brett Cook (A '97)
Laudie Jo Reynolds (A '00)
Jody Wood (A '12)

American Academy in Rome

Dave McKenzie (A '00)
Corin Hewitt (A '04)

American Academy in Berlin

Sanford Biggers (A '98)

Anonymous Was A Woman

Beverly Semmes (A '82)

Art Matters

Victoria Fu (A '06)
Nyeema Morgan (A '09)
Steffani Jemison (A '08)
Jacolby Satterwhite (A '09)

Artist Pension Trust, USA and China

Hong Zhang (A '03)

Adolph and Esther Gottlieb Foundation

Marilyn Friedman (A '85)

BRIC Media Arts Fellowship

Jayoung Yoon (A '09)
Bundith Phunsombatlert (A '09)

CultureWorks

Claire Zitzow (A '11)

Denmark Art Center, Artist in Residence Project Grant

Toni Jo Coppa (A '97)

District of Columbia Commission on the Arts and Humanities Artist Fellowship Program

Molly Springfield (A '05)

Foundation for Contemporary Art

Lorna Ritz (A '68)
Cauleen Smith (A '07)

Houston Arts Alliance, Established Artist Award

Michael K Taylor (A '12)

Illinois Arts Council

Christopher Meerdo (A '13)

Jacques and Natasha Gelman Foundation Fellowship

Michael K Taylor (A '12)

Joan Mitchell Foundation

Carolyn Castaño (A '96)
Amy Feldman (A '09)
Alicia Henry (A '90)
Heather Hart (A '05)
Robert Hodge (A '14)
Jennie C. Jones (A '96, F '14)
Lavar Munroe (A '13)
Glexis Novoa (A '98)
Lamar Peterson (A '02)
Robert A. Pruitt (A '02)
Ralph Pugay (A '12)
Michael K Taylor (A '12)

John Fergus Family Post MFA Fellowship, Ohio State University

Felipe Castelblanco (A '12)

John Simon Guggenheim Memorial Foundation

Tracy Miller (A '92)
Stephanie Syjuco (A '97)
LaToya Ruby Frazier (A '07)

Joyce Foundation

Edra Soto (A '00)

Kala Institute Fellowship Award

Felipe Castelblanco (A '12)

The Laundromat Project: Create Change Fellowship

Suzanne Broughel (A '08)

Louis Comfort Tiffany Foundation

Steve Locke (A '02)
Shinique Smith (A '03)

New York Foundation for the Arts

Francis Cape (A '89)
Tracey Goodman (A '10)
Asuka Goto (A '08)
Letha Wilson (A '09)

Ontario Arts Council Emerging Artist Grant

Meredith Nickie (A '07)

Oregon Arts Commission Joan Shipley Award

Avantika Bawa (A '08)

Oregon Arts Commission Fellowship

Ralph Pugay (A '13)
Ellen Lesperance (A '99)

Pollock Krasner Foundation

Brian Alfred (A '99)
Gwendolyn Kerber (A '79)
Steve Locke (A '02)
Joanna Malinowska (A '01)
Tracy Miller (A '92)
Karyn Olivier (A '00)
Christopher Saucedo (A '88)
Kay Walkingstick (A '02)

Rema Hort Mann Foundation

Danielle Dean (A '12)
Alison O'Daniel (A '07)

Royal Academy of Fine Arts, London Starr Fellowship for Emerging American Artists

Felipe Castelblanco (A '12)

Smithsonian Institute, Artist Research Fellowship

Julia Brown (A '06)

Update 5 Biennial, International New Technological Art Award

JD Beltran (A '88)

The Walters Art Museum, Sondheim Artscape Prize

Lauren Adams (A '09)

ZERO 1, American Arts Incubator for the Philippines

Felipe Castelblanco (A '12)

Residencies

18th Street Arts Center

Los Angeles, CA
Meredith Nickie (A '07)

Andrew Freedman Home

Bronx, NY
Michele Brody, (A '96)

Artist Research Laboratory, Fondazione Antonio Ratti

Como, Italy
Shadi Harouni (A '13)

Art Omi

Ghent, NY
Jesus Benavente (A '12)
Sara Eliassen (A '10)
Jessica Segall (A '10)

Australia Council for the Arts, The Lineage of Eccentricity

Tokyo, Japan
Megan Walch (A '96)

Bemis Center for Contemporary Arts

Omaha, NE
Kenya (Robinson) (A '14)
Claudia Bitran (A '14)
Samantha Bittman (A '11)
Mike Calway-Fagan (A '11)
Mauro Giaconi (A '13)
Heather Hart (A '05)
Fabiola Menchelli Tejada (A '13)
Justin Plakas (A '12)
Jessica Segall (A '10)
Stephanie Syjuco (A '97)

Berlin Collective Artist in Residence Program

Berlin, Germany
Gwendolyn Kerber (A '79)

Blue Mountain Center

Blue Mountain Lake, NY
Mary Temple (A '99)

Brush Creek Foundation for the Arts

Saratoga, WY
Dawn Chandler (A '92)

Djerassi Resident Artists Program

Woodside, CA
Ellen Lesperance (A '99)

The Edward F. Albee Foundation, Artist Residency

Montauk, NY
Anna Kunz (A '09)

Institute for Electronic Arts

Alfred, NY
Jim Morris (A '77)

Fountainhead Residency

Miami, FL
Jacolby Satterwhite (A '09)
Michael Scoggins (A '03)

Franconia Sculpture Park

Shafer, MN
Mike Calway Fagen (A '11)
Chris Manzione (A '12)
Meredith Nickie (A '07)
Kambui Olujimi (A '06)

DOOSAN Residency

New York, NY
Ji Eun Kim (A '09)

Fine Arts Work Center in Provincetown

Provincetown, MA
Firelei Baez (A '08)
Amy Brener (A '11)
Alejandro Guzman (A '12)
Heidi Hahn (A '10)
Gabriel Pionkowski (A '12)

Helsinki International Artist Program

Suomenlinna Island, Helsinki
Jack Pavlik (A '12)

Irish Museum of Modern Art (IMMA)

Dublin, Ireland
Mary Temple (A '99)

Key Holder Residency, Lower East Side Printshop

New York, NY
Shadi Harouni (A '13)

Lighthouse Works

Fishers Island, NY
Gabriela Salazar (A '11)
Siobahn Landry (A '11)

Lower Manhattan Cultural Council

New York, NY
Firelei Baez (A '08)
Lucas Blalock (A '09)
Alejandro Guzman (A '12)
Gordon Hall (A '13)
Heather Hart (A '05)
Amber Hawk Swanson (A '12)
Irvin Morazan (A '92)
Tara Pelletier (A '09)
Andrew Ross (A '06)
Jacolby Satterwhite (A '09)

Macaulay House

Dawson City, Yukon, Canada
Alexandra Feit (A '91)

MacDowell Colony

Peterborough, NH
Sarah Tortora (A '13)

Marie Walsh Sharpe Space Program

New York, NY
Erika Raneë (A '93)
Paul Santoleri (A '91)
Lulzim Shtini (A '07)
Lisa Sigal (A '86)
Amber Hawk Swanson (A '12)
Randy Wray (A '90)

McColl Center for Visual Arts

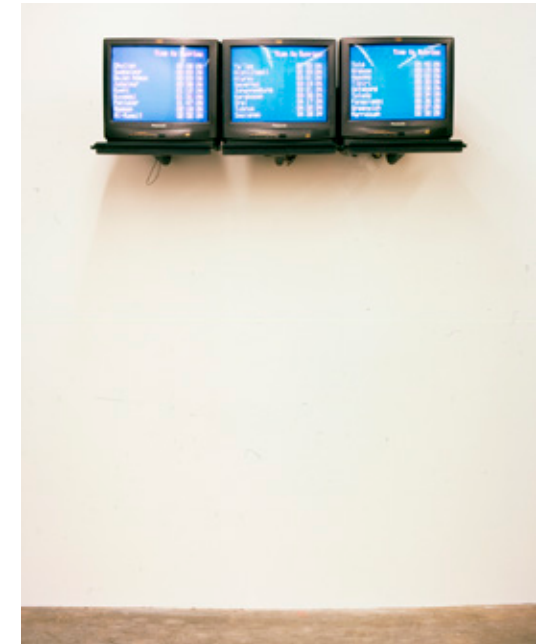
Charlotte, NC
Quynh Vantu (A '12)

Millay Colony

Austerlitz, NY
Meredith Nickie (A '07)

Museum of Fine Arts Houston, Core Program

Boston, MA
Julia Brown (A '06)
Danielle Dean (A '12)
Harold Mendez (A '13)



Paul Ramirez-Jonas (F '00), *Another Day* (2003), computer generated NT SC video signal, three identical monitors, dimensions variable / *Under the Same Sun: Art from Latin America Today*, Solomon R. Guggenheim Museum, New York, NY

National Textile Institute

Islamabad, Pakistan
Catherine Fairbanks (A '11)

Ox-Bow

Saugatuck, MI
Michael K Taylor (A '12)
Shawn Thornton (A '02)

Phats Valley Residency

Truro, MA
Emcee C.M. Master of None (A '07)

Playa Residency Program

Summer Lake, OR
Dawn Chandler (A '92)

Rauschenberg Foundation

Captiva, FL
Jennie C. Jones (A '96)
Edra Soto (A '00)
David Leggett (A '10)

Real Time & Space

Oakland, CA
Mary Temple (A '99)

Ucross Foundation

Sheridan, Wyoming
Teresa Booth Brown (A '88)

Virginia Center for the Creative Arts

Amherst, VA
Michael K Taylor (A '12)

The Vermont Studio Center

Johnson, VT
Nina Buxenbaum (A '01)
Zachary Fabri (A '13)
Jeremiah Hulsebos-Spofford (A '11)
Gwendolyn Kerber (A '79)
Christian Maycheck (A '08)
Shawn Thornton (A '02)
Hong Zhang (A '03)

The Wassai Project

Wassaic, NY
Tim Campbell (A '10)

Triangle Arts Association

New York, NY
Meredith Nickie (A '07)
Jessica Segall (A '10)

Whitney Independent Study Program

New York, NY
Danielle Dean (A '12)
Marisa Williamson (A '12)
Matthew Wilson (A '10)

Woodstock Byrdcliffe Artist Colony

Woodstock, NY
Julia Bland (A '13)

Yaddo

Saratoga Springs, NY
Joan Linder, (A '99)
James Robert Southard (A '12)



Megan Cump (A '00), *Untitled (Perseids)* (2013), C-print, Wrap Around 4, 24 x 74 inches

Support

Thank You!

Skowhegan gratefully acknowledges the following donors whose commitment to supporting the future of artmaking made Skowhegan's programs possible.

A – Alumni
F – Faculty

Gifts received from
01/01/2014 – 12/31/2014

Library Endowment

The Looker Family Trust, "Looker North"

\$50,000+

David Beitzel (A '82) and Darren Walker
Mrs. Mildred C. Brinn, Tatiana Piankova Foundation
Katherine Farley and Jerry Speyer
Greg and Susie Palm, The Palm Foundation
Louise and Leonard Riggio

\$30,000-\$49,999

Jan Aronson
The Brown Foundation, Inc. of Houston
Graham and Ann L. Gund
Robert L. Looker
Wilson and Eliot C. Nolen
Mr. and Mrs. Judson P. Reis, The Sire Foundation

\$20,000-\$29,999

Barnes & Noble, Inc.

The Blavatnik Family Foundation

Andrea Crane and Sam Hoffman
H. King and Jean Cummings Charitable Trust
Chiara and Ben Edmands
Larry Gagosian
Agnes Gund
Mihail Lari and Scott Murray



Richard T. Prins and Connie Steensma
Lisa and Reuben Richards
Alan Wanzenberg

\$10,000-\$19,999

William and Donna Jo Acquavella
Eleanor Acquavella Dejoux
John Coleman, The VIA Agency
The Horace W. Goldsmith Foundation

The Greenwich Collection, Ltd.

Amy and John Griffin
Dorothy Lichtenstein
Victoria Love Salnikoff
John Melick
Donald Moffett (F '04) and Robert Gober (F '94)
May & Samuel Rudin Family Foundation, Inc.
Erica D. and Joseph A. Samuels

Elizabeth Sidamon-Eristoff (A '85) and Hunter Lewis
Sumner Scholarship Endowment Foundation, Inc. in memory of Sumner Rulon-Miller III
Anonymous

\$5,000-\$9,999

Arcus Foundation
Mark H.C. Bessire, Portland Museum of Art
Alex Blavatnik
Colección Patricia Phelps de Cisneros
Robert and Rae Gilson
Glenstone Foundation



Meredith James (A '11)
The Wolf Kahn and Emily Mason Foundation
Anna-Maria and Stephen Kellen Foundation as recommended by Barbara and Andrew Gundlach in honor of Andrea Crane, Victoria Love Salnikoff & Chiara Edmands
The Ronald & Jo Carole Lauder Foundation
Glenn Ligon (F '98)
Libbie J. Masterson
Pierre and Tana Matisse Foundation
Emily and Mitchell Rales
Mr. and Mrs. Andrés Santo Domingo
Richard Serra (F '85)
John Studzinski, CBE
Symington Family Fund
Eugene V. Thaw

Angela Westwater, Sperone Westwater

Angela Westwater, Sperone Westwater

\$1,000-\$4,999

Debra Abell and Cullen Washington, Jr. (A '10)
Diane L. Ackerman
George W. Ahl III
El Anatsui (F '07)
Jeff Arnstein and Michael Field
The Baldwin Foundation as recommended by Andrew Hamill (A '14)
Burt Barr (F '08) in honor of Trisha Brown
Clayton and Amanda Benchley
Janet Inskeep Benton
Barbara Bertozzi Castelli
Marianne Boesky Gallery
Grace G. Bowman
The Broad Art Foundation
Amy Cappellazzo and Joanne Rosen
Christie's
Michael Clifford and Robert Levy
James Cohan Gallery
Contemporary Conservation Ltd.
Brammie and Warren C. Cook
Mr. and Mrs. Willard Cook
Sharon Corwin, Colby College Museum of Art
William S. Cottingham and Tina Patterson
Daphne Cummings (A '82)
DC Moore Gallery
Tracy DiLeo (A '82)
Mark Di Suvero (F '83)
Jeanne Donovan Fisher
Rackstraw H. Downes (F '75, '81, '02)
Thelma and David Driskell (A '53, F '76, '78, '04) in memory of Walter Williams (A '53)
Brenda Earl
Josh and Purdy Eaton

Stefan Edlis and Gael Neeson
Edward Tyler Nahem Fine Art
Frederick & Diana Elghanayan Family Foundation in honor of Andrea Crane
Susan Paul Firestone (A '72)
Helen Frankenthaler Foundation, Inc.
John H. Friedman
Emily Glasser and Billy Susman
Susan Goldberger Jacoby (A '67)
Roger and Jane Goodell
Mary A. and Thomas F. Grasselli Endowment Foundation
Mark Grotjahn (A '95)
Kavi Gupta
Hauser & Wirth
Kate Haw
Maya Hayuk (A '11)
Steve Henry and Philip Shneidman
Dr. Shoichi Kajima (A '55)
Lucia Kellar
Noel Kirnon
Stephanie and Jody La Nasa
Nicholas Lawrence (A '83)
Mr. and Mrs. Peter O. Lawson-Johnston
Barbara Lee in honor of Lucy Lippard
Lisa Yun Lee
Galerie Lelong
Damian and Zoya T. Loeb
Luhring Augustine
Peter and Paula Lunder, The Lunder Foundation
Charles Marburg (A '77)
Matthew Marks
Anthony and Celeste Meier
David Meitus and Angela Westwater
Amy L. Mellen
Richard and Ronay Menschel
Alexander F. Milliken
Cynthia Ann Miscikowski
Tiffany E. Moller
Carrie Moyer (A '95, F '10)
Nancy B. Negley (A '73)
Amanda and James Opinsky (A '77)
The Overbrook Foundation
The Pace Gallery
Mario J. Palumbo, Jr. and Stephen Gargiulo
John W. Payson
Sheila Pepe (A '94, F '13)
Thomas M. Phifer
Lindsay Pollock and Andrew S. Zarnett
Jonelle Procope and Fred Terrell
Mr. and Mrs. Thomas W. Purcell, Jr.

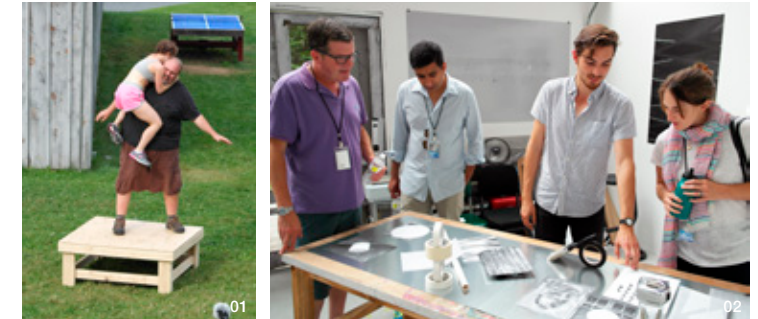
Eleanor W. Revson and Richard J. Lord
John A. Robbins
David Rockefeller
David and Susan Rockefeller
Allison L. Rubler
Thomas and Georgina Russo, Gardner Russo & Gardner
F. Thomas Schmidt
Jonathan and Kimberly Schulhof
Steve Shane in memory of Anita Reiner
Mr. and Mrs. Peter L. Sheldon
Mark Simon
Donald and Vivian Sonnenborn
Mr. and Mrs. Burton B. Staniar
Christine Stanton and Mitch Wasterlain
Michael Steinberg
Do-Ho Suh (A '93)
Carol Sutton Lewis
David Teiger
Jacqueline Tran
August O. Uribe
Ursula von Rydingsvard (F '88)
Dorsey Waxter
Thea Westreich Wagner and Ethan Wagner
John (A '90) and Marie Williams
Barry and Jan Zubrow
Anonymous (2)

\$500-\$999

Camilo Alvarez
John J. Anselmi
Anthony Aziz, Parsons The New School for Design
Donald Baechler (F '94)
Elizabeth C. Baker
Bowdoin College Museum of Art
Matthew Brannon (F '13)
Melva Bucksbaum and Raymond Leary
The Florence V. Burden Foundation at the recommendation of Foundation Directors Ordway and Jean Burden
Mrs. Iris Cantor
Julian and Lucy Colville
Anita Contini
Elizabeth D. Dovydenas (A '76)
Constance Evans
Anoka Farugee (A '95, F '10)
Katherine Gass
Richard Gluckman and Tiffany Bell
Jason Herrick and Lindsay Smith
Barbara Hoffman
Mr. and Mrs. James E. Hunt

2014 TRUSTEES' & GOVERNORS' WEEKEND

Trustees, Governors, alumni, neighbors, and friends came together on campus July 18–20 for a celebration of Skowhegan's program. The weekend allowed guests to visit studios and facilities, enjoy shared meals by the lake, listen to a lecture by Betye Saar in the Fresco Barn, and attend the spirited Costume Ball.



01 Performance by Anna Garner with Martin Kersels (F '10) 02 Rob Looker, Mihail Lari, and Katie Sonnenborn in Joseph Parra's studio 03 Jennie C. Jones (A '96) with Bailey Symington and Alan Wanzenberg 04 David Beitzel (A '82) and Sheila Pepe (A '94, F '13) 05 Lecture by Betye Saar (F '85) with Alison Saar (F '93) 06 Studio visits 07 Red Farm dinner



2014 AWARDS DINNER

Co-chairs David Beitzel (A '82) & Darren Walker, Andrea Crane, Eleanor Acquavella Dejoux, and Fred Wilson (F '95) hosted the 2014 Dinner in New York City. Awards went to Theaster Gates, Kate D. Levin, Lucy Lippard (F '79), and Louise & Leonard Riggio, and raised over \$900,000. Janine Antoni (F '98) and Stephen Petronio staged a performance for dinner guests.



01 The evening's honorees and presenters **02** Glenn Ligon (F '98), Gayle Brown, and Robert Gober (F '94) **03** Performance by Janine Antoni (F '98) with dancer Nick Sciscione choreographed by Stephen Petronio **04** Eliza Myrie (A '10), Jill Pangallo (A '10), and Lisa Yun Lee **05** Margaux Ogden (A '11), Meredith James (A '11), Jonathan Ehrenberg (A '11), Gabriela Salazar (A '11), and Lucas Blalock (A '11) **06** Linda Earle, Jacoby Satterwhite (A '09), Erica Ehrenberg, and Jennifer Sullivan (A '11) **07** Ann Gund, Agnes Gund, and Mark di Suvero (F '83) / Photography by Benjamin Lozovsky/BFAnyc.com and Christian Grattan

Jack Shainman Gallery
James Goodman Gallery
Sean Johnson
June Kelly Gallery
Lorraine Kaufman Foundation
Kenneth F. Koen
Joyce Kozloff (F '98)
Kyes Insurance
Wendy F. Lang (A '54, '55, '56)
Laura Lobdell (A '99)
Steven Locke (A '02)
Michael Ludwig
Catherine MacMahon
Norma B. Marin
Virgil M. Marti, Jr. (A '90, F '12) and Peter Barberie
Michael Menchaca (A '11)
Mr. and Mrs. Timothy O'Hara
Paula Cooper Gallery
Penny Pilkington and Wendy Olsoff
Mr. and Mrs. Stephen Robert
Tyler Rollins
Mr. and Mrs. Benjamin M. Rosen
John W. and Carolyn J. Rosenblum
Rhoda Ross (A '86)
Christine and Kenneth (A '68) Rush, Jr.
Sean Ryan (A '03)
Cathy A. Sarkowsky (A '93)
Jinnie Seo (A '90)
Shinique Smith (A '03)
Katie and Jonah Sonnenborn
Mrs. Elizabeth Strong de Cuevas
Mr. and Mrs. Wayne Thiebaut (F '78)
Mr. and Mrs. Thurston Twigg-Smith
Myron C. and Carol Warshauer Family Foundation
Sarah Workneh
Don Zacharia
Anonymous

\$250-\$499

Ellen Altfest (A '02)
Eric Angles (A '03)
Mary Armstrong (A '77)
Leslie Bathgate Heaney and Andrew Heaney in honor of Eleanor Dejoux
Paul Beirne
Madeleine Bennett
Dike Blair (A '74, F '12)
Holly Block
Stephen Blossom (A '77)
Maggie and Willard Boepple (A '63)
Astrid M. Bowlby (A '02)
Daniel A. Bozhkov (A '90, F '11)
Katherine Bradford (F '09)

Joan E. Branca (A '72) in memory of Joseph C. Branca
The Andrea and Charles Bronfman Philanthropies at the recommendation of Charles Bronfman, in honor of Jan Aronson
Mr. and Mrs. Michael Cohen
Rebecca J. Cook
Joshua David and Stephen Hirsh
Barry A. and Shari B. Dinaburg
Lois Dodd (F '79)
Kimberly E. Donaldson
Linda Earle
Jackson Eisenpresser
Benjamin A. Fain (A '08)
Al and Ginny Ferrara
Karen Hesse Flatow (A '94)
James J. Grogan
Ann S. Hedges (A '68)
Ralph Helmick (A '79)
Elizabeth R. Hilpman
Robert L. Ireland
Frank Jackson (A '85)
Jennie C. Jones (A '96, F '14)
Ada and Alex Katz (A '49, '50, F '60, '63, '64, '67, '71, '75, '95)
Colleen Keegan
Byron Kim (A '86, F '99, '13)
Megan Liu Kincheloe (A '13)
Tony Ligamari (A '83)
Anissa Mack (A '99, F '11)
Javier Martinez
Catherine Murphy (A '66)
Catherine Opie (F '10)
Alix Pearlstein (F '04) and Bill Adams (A '80, F '05)
Mr. and Mrs. Howard Rachofsky
Catherine Ross (A '02)
Carole Server Frankel
Nataliya Slinko (A '10)
Hunt A. Slonem (A '72)
Andrew Solomon
William and Nan Stone
Jennifer Sullivan Carney (A '91)
Bridget and Patrick Wade
Allison Weisberg

Up to \$250

Patricia Abbott-Ryan (A '81)
Sigmund Abeles (A '55, '56)
Katherine Alward (A '83)
Betsy Alwin (A '01)
Are You Ready to Party?? M.L. (A '08) and J.H. Aronovitz, in honor of Ellie Rothstein, Bat Mitzvah
Artist & Craftsman Supply
Nathaniel Axel (A '11)
Herbert W. Babcock (A '67)
Paul Banas (A '74)
Nicholas Baume

Carol Beckwith (A '64, '66, '67) in honor of Noma Copley
Sarah Bedford (A '97)
Anthea Behm (A '14)
Christy Bergland (A '68)
Michael Berman (A '92)
Michael Biddle (A '61, '64, F '71)
Claudia Bitran (A '14)
Samantha Bittman (A '11)
Lucas Blalock (A '11)
Mara Bodis-Wollner (A '07)
Douglas Bosch (A '91)
Sara Bright (A '10)
Suzanne Broughel (A '08)
Gayle E. Brown
Ashley F. Bryan (A '46, '56)
Ken Buhler (A '76)
The Caldbeck Gallery
Mike Calway-Fagen (A '11)
Polly Carpenter (A '75)
Christopher Carroll (A '08)
Felipe Castelblanco Olaya (A '12)
Center for Maine Contemporary Art
Dawn Chandler (A '92)
Katherine Chapman
Christopher Chiappa (A '97)
Milano Chow (A '13)
Allana Clarke (A '14)
Class of '95
David Coggins (A '01)
Barnett Cohen (A '12)
Sue A. Collier (A '79)
Maurice Colton III (A '70)
Marella L. Consolini
Carol H.P. Cooper (A '60)
Toni Jo Coppa (A '97)
Heather Cox (A '97)

Susan G. and Kennedy Crane III
Alan Crichton (A '82)
Megan Cump (A '00)
Greg Curry (A '85)
Erin Curtis (A '10)
Jacqueline Davidson (A '58)
Mary DeWitt (A '85)
Stephanie Diamond (A '00)
Paul Divone (A '82)
John L. Dombroski (A '13)
Anastasia Douka (A '13)
James Dowdalls (A '78)
Anthony Craig Drennen (A '06)
William P. Dubord
Jennifer Dudley (A '06) in honor of the Class of 2006
Christopher Dunbar (A '91)
Richard Dupont
Onda F. D'Urso (A '49)
Jonathan Ehrenberg (A '11)
David J. Einstein (A '70)
Angela Ellsworth (A '93)
Hersha Evans (A '83)
Catherine Fairbanks (A '11)
Marcus Chad Farris (A '97)
Ruth Fine (A '61)
Fleisher Ollman Gallery
Robert N. Flynt (A '74, '76)
Rachel Frank (A '05)
James Benjamin Franklin (A '94)
Jon R. Friedman (A '69)
Jane F. Gagne (A '80)
Robert Gainer (A '83)
Lilian Garcia-Roig (A '90)
Elise Gardella
John A. Germain (A '76)
Daniel Giles (A '13)
Adu A. Gindy (A '89)

Andrew Ginzel (F '98) and Kristin Jones (F '98)
Leslie A. Golomb (A '72)
John C. Gonzalez (A '08)
Tracey Goodman (A '10)
Philip M. Grausman (A '56, '57, F '73)
Mr. Francis Greenburger
J. Conor Grogan
Richard Haas (F '82, '84)
David G. Hacker (A '84)
Christina Haglid (A '90)
Jane Hammond (F '92, '05)
Gail A. Hansberry (A '60)
David Hardy (A '04) and Abbey Williams (A '04)
Heather Hart (A '05)
Lynne Harwood (A '67)
Joshua Haycraft (A '13)
Connie Hayes (A '89)
Carol Hendrickson (A '71)
Alicia Henry (A '90)
Heritage House Restaurant
Katie Herzog (A '07)
Sarah Hewitt (A '13)
Ulrike Heydenreich (A '01)
Suzanne Hodes (A '57, '58) in memory of Marianna Pineda
Stephen Hoke (A '73)
Susan F. Homer (A '93)
Jeremiah Hulsebos-Spofford (A '11)
Anthony J. Iacono (A '13)
Michael L. Jackson (A '79)
Diana Jensen (A '92)
Andrew Johnson (A '99)
Courtney A. Jordan (A '05)
James D. Julia
Edward and Helena Kadunc
Yoshiko Kanai (A '96)

Kari Kaplan Rives (A '82)
Mindi Katzman (A '84)
Chake Kavookjian Higginson (A '77)
Gwen Kerber (A '79)
James Kielkopf (A '64)
Patrick Killoran (A '98) in memory of Duchamp!
Haegeen Kim (A '06)
Becky Kinder (A '04)
Noah Klersfeld (A '03) in memory of Barry Michaeloff and Edward Klersfeld
Yoshua Klos (A '05)
Candace Knapp (A '69)
David J. Knoebel (A '72)
Elaine Taylor Krogius (A '53)
Anna Kunz (A '09)
John Landewe (A '00)
Barbara Lapcek
Annette Lawrence (A '96)
Li-hua Lei (A '98)
Dan Levenson (A '09)
Margaret E. Libby (A '87)
Joan Linder (A '99)
Sandy Litchfield (A '07)
Nan Hall Lombardi (A '88)
Emalie S. Lorens (A '48)
Angela Lorenz (F '07)
Whitfield Lovell (A '85, F '01, '01, '05)
Tristin Lowe (A '89)
Dimitar Lukanov (A '95)
Robert MacDonald (A '96)
Sharon Madanes (A '14)
Town of Madison
J. Louise Makary (A '14)

Marisa Mandler (A '10) in memory of Nancy Sackett Mandler
Katherine Mangiardi (A '07)
Iñigo Manglano-Ovalle (F '02)
Penelope Harbage Manzella (A '51)
Monica Martinez (A '06)
Emily Mast (A '06) and Karl Haendel (A '00)
Jessica May
Natasha Mayers (A '76)
Sarah McEaney (F '05)
Julie L. McGee
Dave McKenzie (A '00, F '11)
Emil A. Mellow II (A '78)
Josephine A. Merck (A '68, '73)
Frank Meuschke (A '00)
Melissa Meyer (F '02)
Ander Mikalson (A '12)
Susan B. Miller (A '68, '71)
Tracy Miller (A '92)
Nancy Modlin Katz (A '78)
Ann-Michele Morales (A '97)
Jason Mortara (A '06)
Michael Muelhaupt (A '13)
Lavar Munroe (A '13)
Walter Murch (F '07)
Ilse Murdock (A '12)
Sophia Narrett (A '14)
Dona Nelson (F '13)
Itty Neuhaus (A '89)
Heidi Nitze (A '56, '57)
Alison O'Daniel (A '07)
Margaux Ogden (A '11)
Helene O'Toole (A '89)
Lisa Park
Herbert Parsons (A '64)
Bruce Pearson (F '01)

Scholarship Grants

Matching School Tuition

Boston University
California Institute of the Arts
Cornell University
Maryland Institute College of Art
Massachusetts College of Art and Design
Northwestern University
Rhode Island School of Design
School of the Art Institute of Chicago
The Ohio State University
Tyler School of Art
University of California, San Diego
University of Florida
University of Iowa

Endowed Scholarships

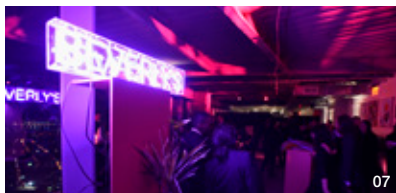
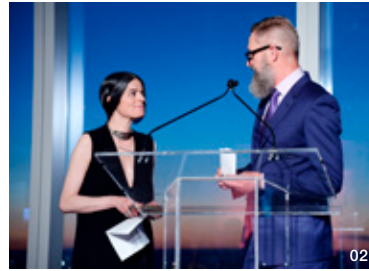
Bingham Scholarship
Camile Cosby Scholarship
Donald and Doris Fisher Scholarship
Gober-Moffett Scholarship
Ann and Graham Gund Scholarship
George Gund Scholarship
Alex Katz Scholarship
Jacob and Gwendolyn Lawrence Scholarship
Peter Lewis Scholarship
Toby Fund Scholarship
Don F. Turano Scholarship
Wallace-Reader's Digest Scholarship
W & M Zorach Scholarship

If you are interested in learning how to endow a Skowhegan scholarship or support a current participant, please contact Katie Grogan at kgrogan@skowheganart.org or 212 529 0505.



2015 AWARDS DINNER

Co-Chaired by Mihail Lari, Rob Looker, Eleanor Acquavella Dejoux & Chiara Edmands and hosted by Martin Kersels (F '12), the 2015 Awards Dinner honored Christopher Wool, Lia Gangitano (A '90), and Estrellita & Daniel Brodsky and raised \$825,000. Meredith James (A '11) and Beverly's (A '12) created dramatic installations for the event.



01 Meredith James (A '11) 02 Honoree Lia Gangitano (A '90) and Presenter Virgil Marti (A '90, F '12) 03 Host Martin Kersels (F '12) 04 Daniel Bozhkov (A '90, F '11) 05 Dinner Co-Chairs Mihail Lari, Rob Looker, Eleanor Acquavella Dejoux and Chiara Edmands 06 Artwork by Siebren Versteeg (A '04) 07 Installation and afterparty by Beverly's (A '12) 08 Graham Hamilton with Honorees Estrellita and Daniel Brodsky 09 Christopher Wool, Richard Prince, Lydia Andich, Robert Gober (F '94), Katie Sonnenborn, and Sarah Workneh
Photography by Clint Spaulding/PatrickMcMullan.com and Christian Grattan

Paul Pfeiffer (F '05, '10)
Ashely and Henry Phylfe
Gabriel Pionkowski (A '12)
Justin Plakas (A '12)
Amy Podmore (A '86)
Jan Postma and
Jane Panetta
Lee F. Potter
Charlotte Present (A '66)
Martin Puryear (F '80, '88)
David F. Reed (A '66, F '88)
Matthew T. Rich (A '10)
Angela Ringo (A '06)
Celeste Roberge (A '79)
Marrin Robinson (A '86)
Jacque Rochester (A '72)
Omar Rodriguez-
Graham (A '13)
Hanneline Røgeberg
(A '88, F '09)
Wendy Rowland (A '67)
Alysa Rowlands (A '91)
Allen Ruppberg (F '01)

Alison Saar (F '93)
Betye Saar (F '85, '14)
Yoshie Sakai (A '14)
Gabriela Salazar (A '11)
Sara Saltzman (A '05)
Claudia Sbrissa (A '03)
Ralph Scarcelli (A '65)
Marjorie Dee Schwab
Beverly Semmes
(A '82, F '01, '05)
Abigail Shahn (A '59, '61)
Emalie Shapira
Lorens (A '48)
Arlene Shechet (F '12)
Adam Shecter (A '06)
David Shrobe (A '14)
Lulzim Shtini (A '07)
Gedi Sibony (A '99) and
Jennifer Monick (A '99)
Gina Siepel (A '08)
Lisa Sigal (A '86, F '06)
Amy Sillman (F '00)
Alan Singer (A '73)

Nobuyuki Siraisi (A '59)
Michael Smith (F '11)
Adrienne Snow
Ellen M. Soffer (A '81)
Kathleen Soles (A '77)
Molly Springfield (A '06)
Stacy Stark in honor of
Bob Gober (F '94)
Joan Steinman (A '82)
Aaron T. Stephan (A '02)
Luke Stettner (A '10)
Naqeeb Stevens
Rachel Stevens (A '84)
Barbara Sullivan
Eve Sussman (A '89, F '05)
Rob Swainston (A '07)
Marc Swanson (A
'00, F '14)
Mark Taber (A '06)
Gina Tabibian (A '10)
Mary Temple (A '99)
Hank Willis Thomas (A '05)
Montana Torrey (A '06)

Sarah Tortora (A '13)
Daniel Treado (A '92)
Nicole Tschampel (A '01)
Anna Tsouhlarakis (A '02)
Tomoe Tsutsumi (A '10)
Carrie Ungerman (A '89)
Juana Valdes (A '95)
Louisa Van Lear (A '06)
Susanna G. Vapnek (A '02)
Tabitha Vevers (A '87)
Kai Vierstra (A '05)
Sandy Walker (A '63)
Constance Walsh (A '96)
Lindsay Walt (A '77) and
Colin H. Thomson (A '74)
John Walter (A '12)
Nat Ward
Ware-Butler, Inc. Lumber
and Building Supply
Cullen B. Washington,
Jr. (A '10)
Marie K. Watt (A '95)
Brindalyn Webster
Chen (A '09)

Larry Weintraut III in
honor of Seneca D.
Weintraut (A '13)
Alan Wiener (A '89)
Allison K. Wiese (A '99)
Meredith Wildes
Cornell (A '64) in
honor of Sigmund
Abeles (A '55, '56)
Wayne F. Williams
(A '56, '57)
Matthew Wilson (A '10)
Carmen Winant (A '10)
Gerald Wolfe (A '74)
Eva Wylie (A '07)
Steven Yazzie (A '06)
Gordon Yee (A '61)
Andrew Yoder (A '81)
Mary-Eileen Zadlo
Barbara Zucker (F '84, '87)
in memory of Patsy Norvell
Anonymous (2)



In Memoriam

With regret we note the passing of these friends from our Skowhegan community.

Anne Arnold (F '74), Governor 1981–2010
Jack Beal (F '70)
Edgar M. Bronfman, husband
of Trustee Jan Aronson
Claire C. Burke (A '84)
Charles F. Cajori (A '48, '54), Governor
1962–81 and 1988–89
Laurie Hickman Cox (A '84)
Arthur Danto, (F '89, Paul Mellon Fellow)
Jane Freilicher (F '68, '88)
Steven Griffith (A '74)

William King (A '48, '51, '52, F '67, '75,
'77, '82, '89), Governor Emeritus
Roger Majorowicz (A '57, F '70)
Zizi Raymond (A '85), Sculpture
Technician 1989
Louis Romero (A '89)
Jane Wilson (F '84), Governor 1981–92
David Shapiro (A '65)
Susan Sollins, Recipient of
2008 Governors' Award

Jane Freilicher (F '68, '88), *Flowering Pear* (1992), color lithograph with hand coloring, 24 3/8 x 26 inches, benefit print to support Skowhegan.

Boards & Staff

BOARD OF TRUSTEES

Ann L. Gund, Chair
Gregory K. Palm,
President
Richard T. Prins, Treasurer
Andrea Crane, Secretary
Jan Aronson
David Beitzel (A '82)
Grace G. Bowman
Mildred C. Brinn,
Chair Emeritus
John R. Coleman
Warren C. Cook
Eleanor Acquavella Dejoux
Chiara Edmands
Susan Paul Firestone (A '72)
Robert Gilson
Mihail Lari
Robert L. Looker
Victoria Love Sahnkoff
Libbie J. Masterson
John Melick
Wilson Nolen
Judson P. Reis
Eleanor W. Revson
Alan Wanzenberg

TRUSTEE EMERITUS

John W. Payson

BOARD OF GOVERNORS

Maria Elena González (F '05),
Chair
Anoka Faruqee (A '95, F '10),
Vice Chair
Emma Amos (F '86, '97, '06)
Janine Antoni (F '98)
Donald Baechler (F '94)
Daniel Bozhkov (A '90, F '11)
Matthew Brannon (F '13)
Louis Cameron (A '96)
Francis Cape (A '89, F '08)
Marie-Antoinette Chiarenza,
RELAX (F '13)
Mel Chin (F '95)
Daphne Cummings (A '82)

Martha Diamond (F '77, '83)
Chitra Ganesh (A '01, F '13)
Guy Goodwin (F '88, '93)
Richard Haas (F '82, '84)
Jane Hammond (F '92, '05)
Daniel Hauser, RELAX (F '13)
Bill Jensen (F '83, '86)
Jennie C. Jones (A '96, F '14)
Martin Kersels (F '10)
Byron Kim (A '86, F '99, '13)
Guillermo Kuitca (F '99, '04)
Tommy Lanigan-Schmidt
(F '91, '92, '97, '13)
Whitfield Lovell (A '85,
F '01, '02, '05)
Inigo Manglano-Ovalle
(F '02)

Fabian Marcaccio (F '97)
Marlene McCarty (F '11)
Suzanne McClelland (F '99)
Dave McKenzie (A '00,
F '11)
Donald Moffett (F '04)
Carrie Moyer (A '95, F '10)
Alix Pearlstein (F '04)
Paul Pfeiffer (F '05, '10)
Howardena Pindell (F '80)
David Reed (A '66, F '88)
Allen Ruppberg (F '01)
Alison Saar (F '93)
Beverly Semmes (A '82,
F '01, '05)

Lisa Sigal (A '86, F '06)
Kiki Smith (F '93)
Robert Storr (A '78, F '02)
Marc Swanson (A '00, F '14)
Julianne Swartz (A '99,
F '08)
William Wegman (F '83,
'92)
Fred Wilson (F '95)

GOVERNOR EMERITUS

Lois Dodd (F '79)

ADVISORY COMMITTEE

Douglas S. Cramer
Philippe de Montebello
David Driskell (A '53, F '76,
'78, '04)
Kathy Halbreich (A '65)
John L. Marion
Kynaston McShine
Richard E. Oldenburg
Linda Shearer
Lowery Sims

ALLIANCE

Becky Kinder (A '08)
Co-Chair
Michael Scoggins (A '03)
Co-Chair
Pasqualina Azzarello (A '08)
Jesus Benavente (A '12)
Alan Calpe (A '06)
Andrea Chung (A '08)
Esteban del Valle (A '11)
Don Edler (A '12)
Zachary Fabri (A '13)
Rachel Frank (A '05)
Gordon Hall (A '13)
David Hardy (A '04)
Maya Hayuk (A '11)
Noah Klersfeld (A '03)
Dan Levenson (A '09)
Katie Mangiardi (A '07)
Lilly McElroy (A '06)
Eliza Newman-Saul (A '05)
Jill Pangallo (A '10)
Sondra Perry (A '13)
Meridith Pingree (A '03)
Birgit Rathsmann (A '04)
Gabriela Salazar (A '11)
Carrie Schneider (A '07)
Becky Sellinger (A '12)
Adam Shecter (A '06)
Fabian Tabibian (A '10)
Nicole Tschampel (A '01)

YEAR-ROUND STAFF

Christopher Carroll (A '08),
Program Coordinator
Elise Gardella, Office &
Board Liaison
Katie Grogan,
Development Manager
William Holmes, Campus
Grounds & Maintenance
Manager
Paige Laino, Program
Assistant
Katie Sonnenborn,
Co-Director
Sarah Workneh,
Co-Director
Mary-Eileen (M.E.)
Zadlo, Archives &
Communications

2014 SUMMER STAFF

Program Coordinator
Katherine Leisen
Deans
Michael Berryhill (A '07)
Carmen Winant (A '10)

Fresco
Nicholas Sean Glover (A '03)

Library

Meredith Gaglio,
Head Librarian
Elizabeth Mooney,
Archivist
Media Lab
Christopher Carroll (A '08),
Media Lab Manager
Lilly McElroy (A '06), Media
Associate

Sculpture Shop

Chris Domenick (A '12),
Sculpture Shop Manager

Food & Residence Service

Waneeta Marquis,
Chef and Food Service &
Residence Manager

Pam Musset,
Assistant Chef
Pam Fuller, Red Farm
Cailee Manzer,
Housekeeping
Krystal Royce,
Housekeeping
Shawn Thornton (A '02),
Baker
Jon Logan,
Food & Residence
Assistant, Van Driver
Eve Payne
John Harlow
Eliza Halmo
Claire Pedulla
Rose Lambert-Sluder
Rebecca Fredrick
Joshua Vanadestine

Grounds & Maintenance

Ralph Drouin,
Grounds Staff
Kevin Flanagan, Carpenter
Larry Gray, Grounds Staff
Peter Jillson,
Grounds Staff

Ron Pinkham,
Grounds Staff
Peter Campbell, Gardener

Journal Printer

RMI Printing

Photography

Courtney Andrews (A '14)
Christopher Carroll (A '08)
Paige Laino
Kathy Leisen
Chris Papa (A '14)
Magdalen Wong (A '14)

